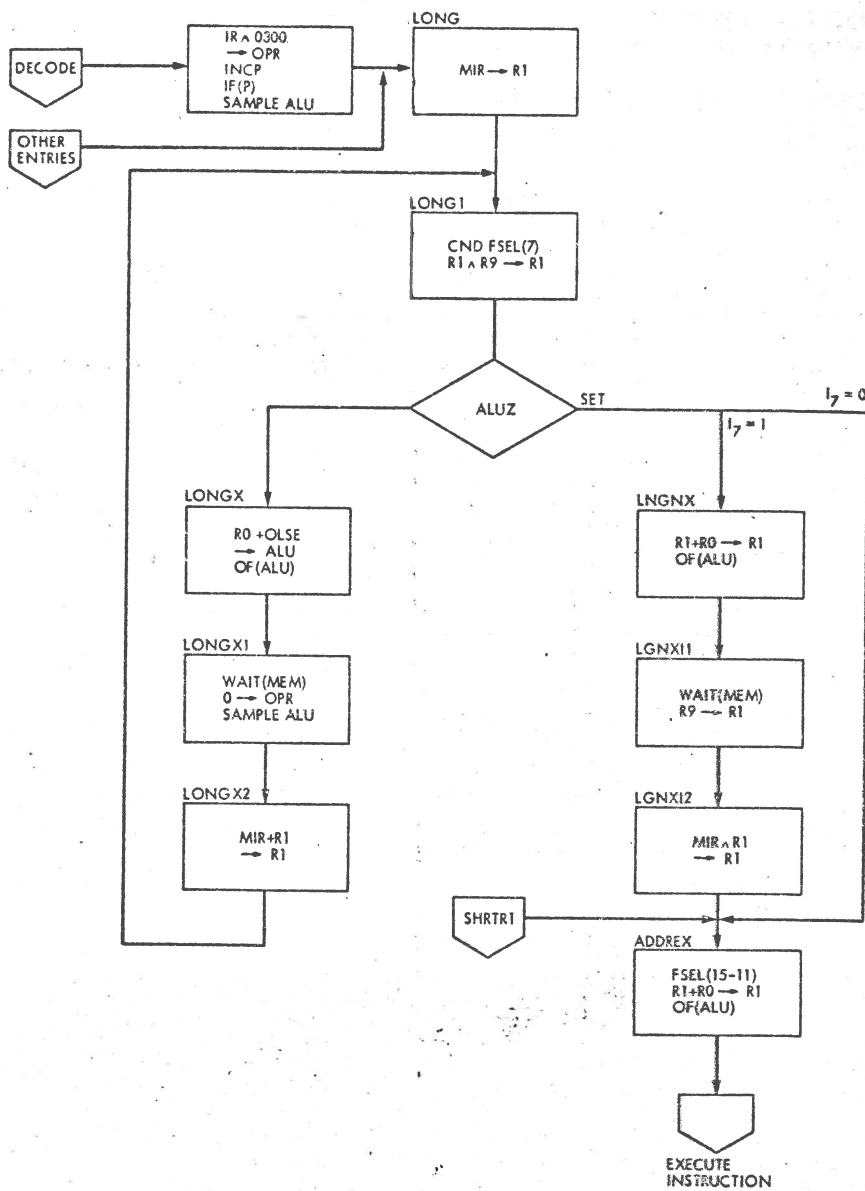
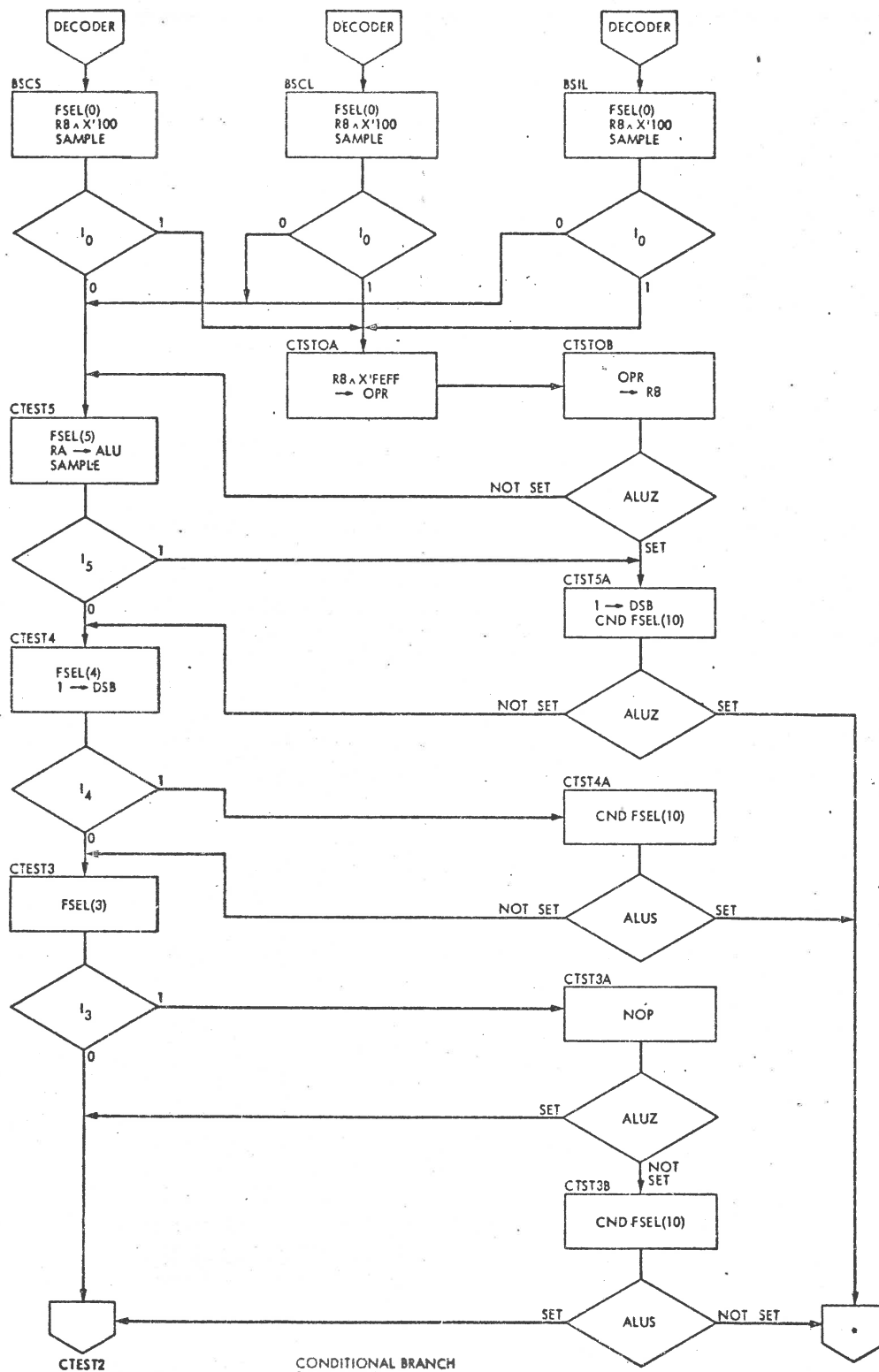
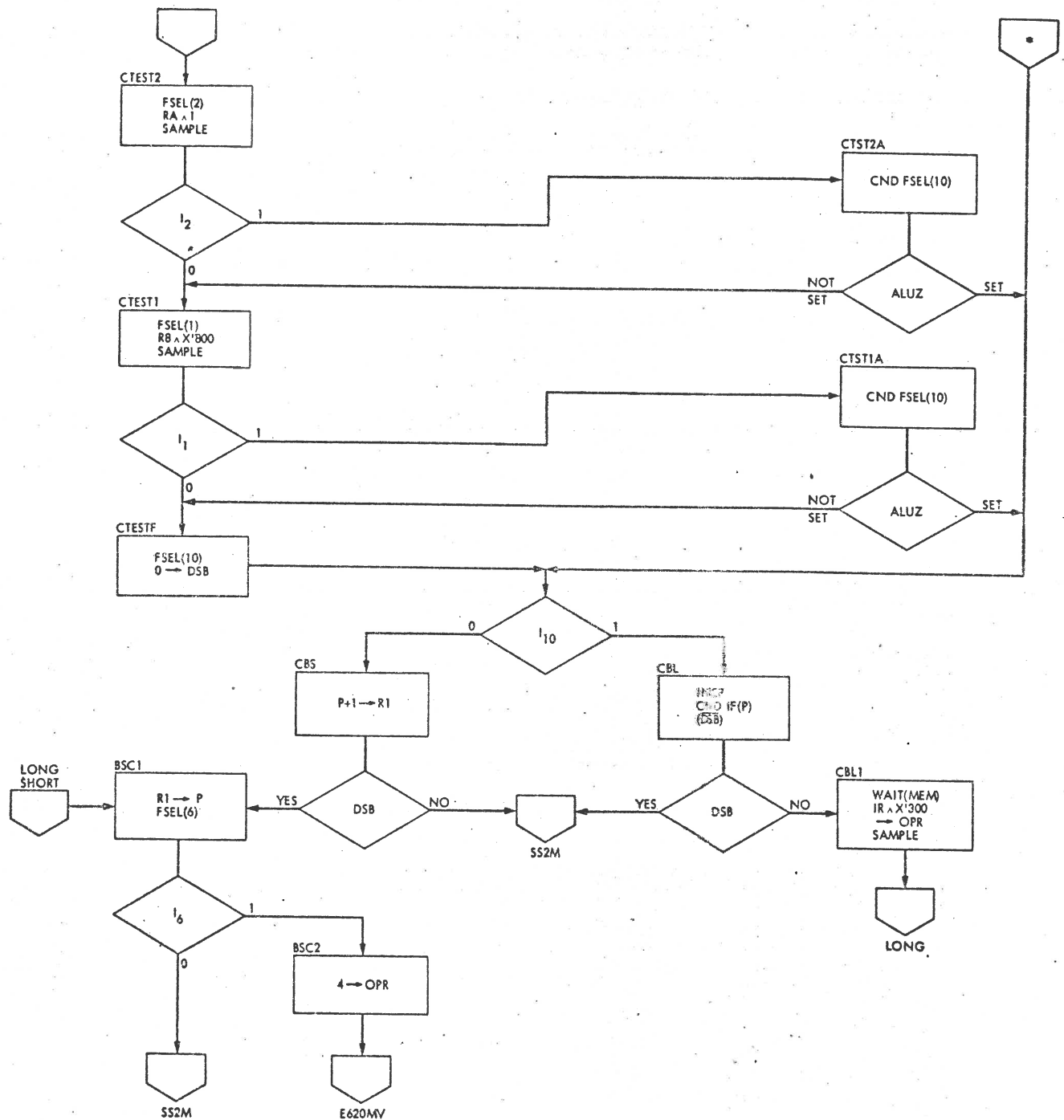


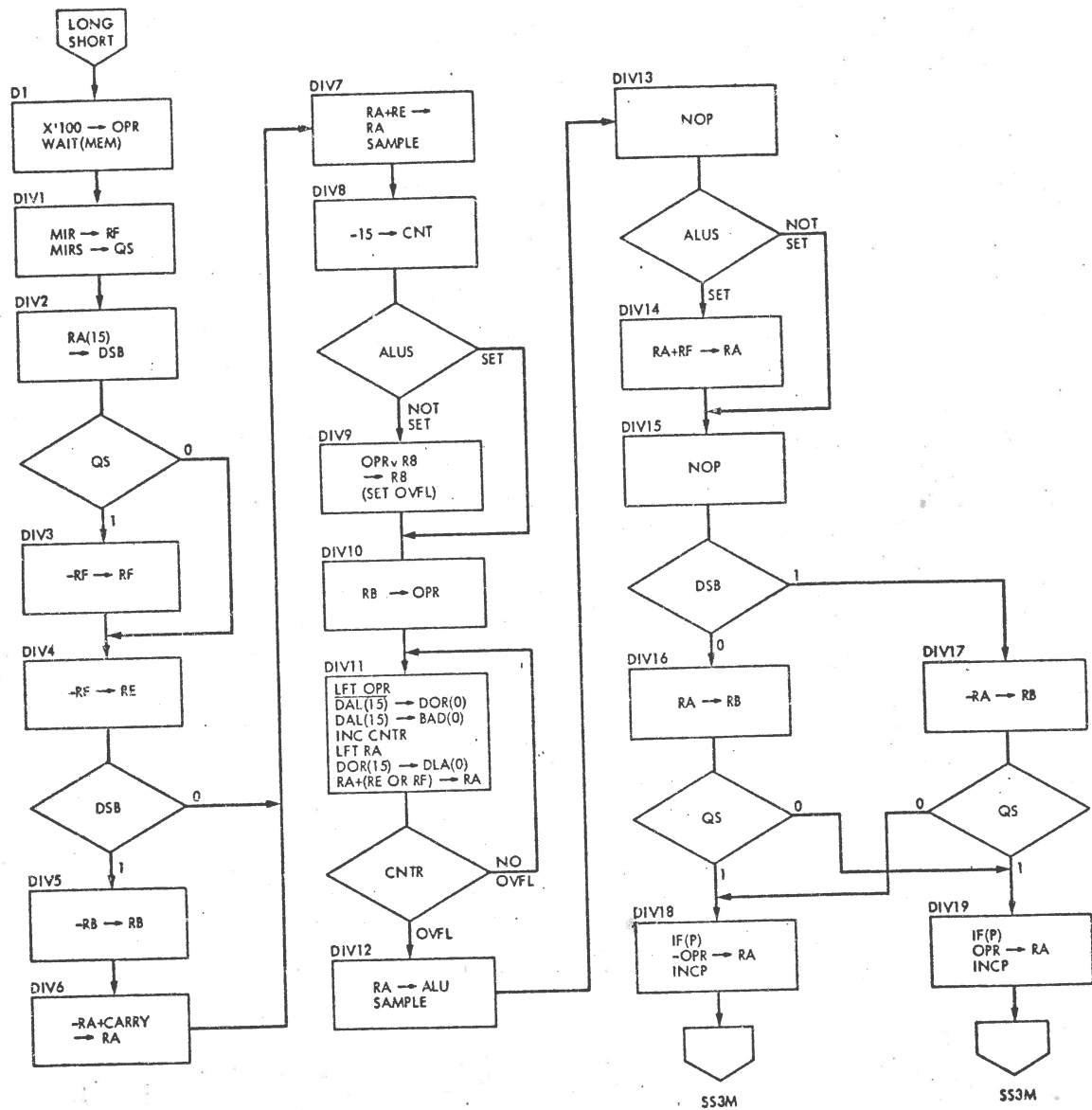
OPERAND FETCH  
SHORT FORMAT INSTRUCTION.



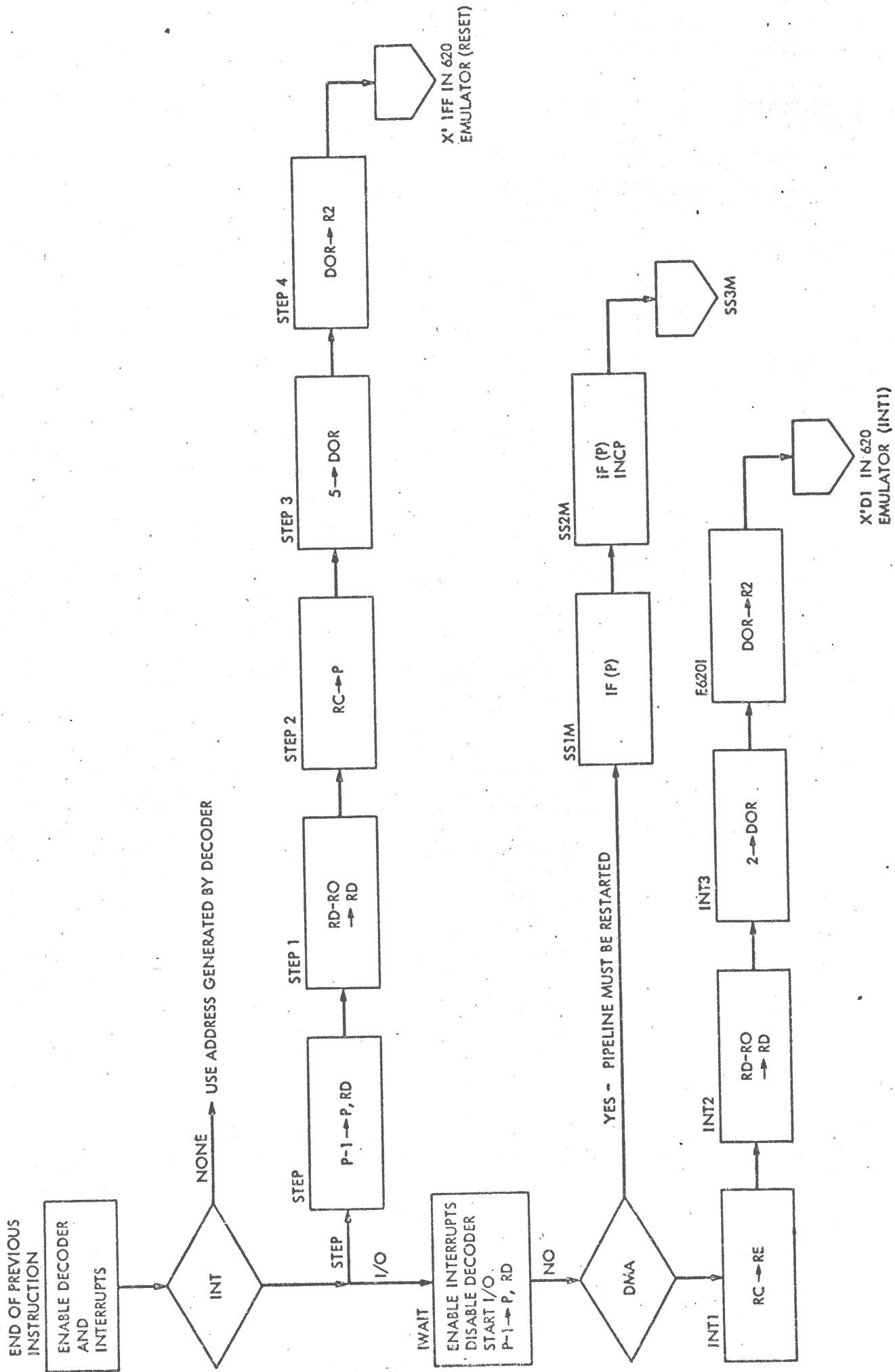
OPERAND FETCH  
LONG FORMAT INSTRUCTION

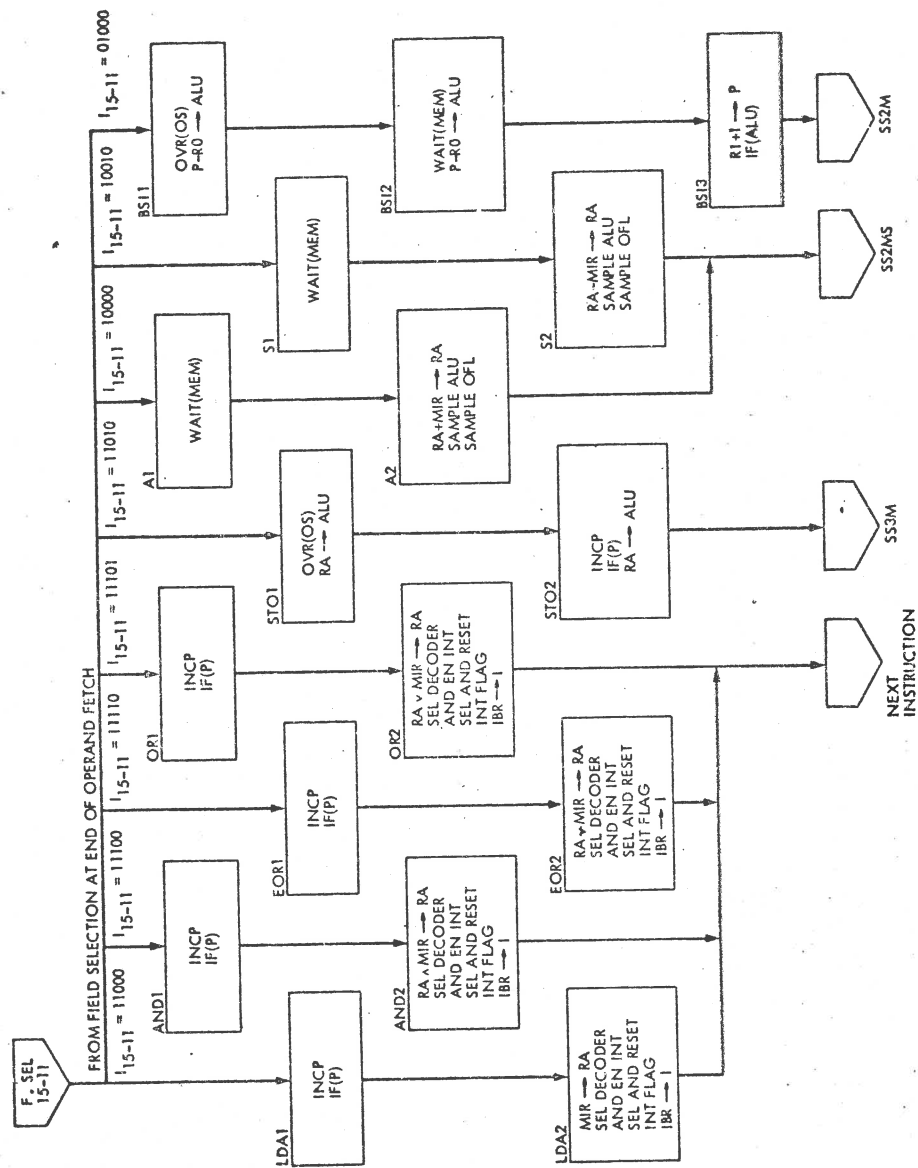






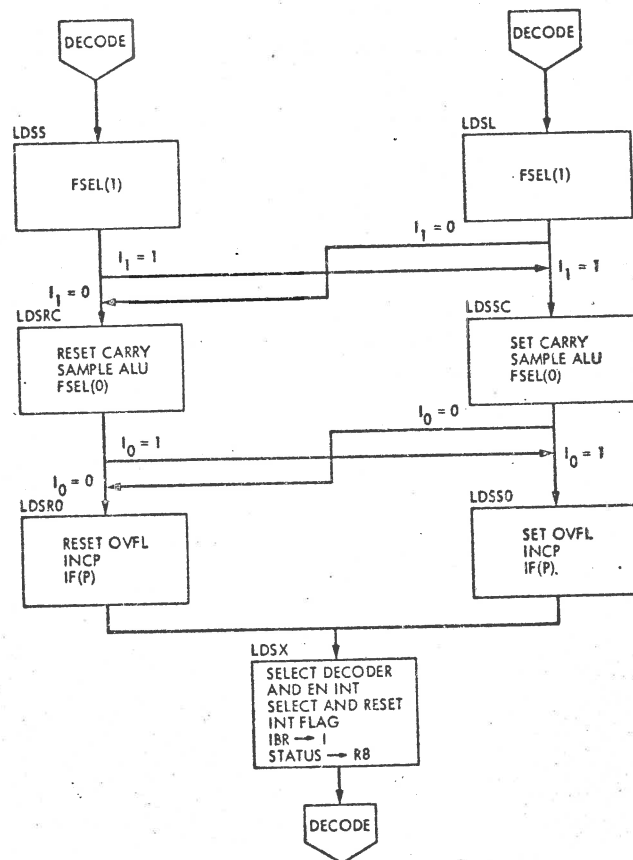
DIVIDE



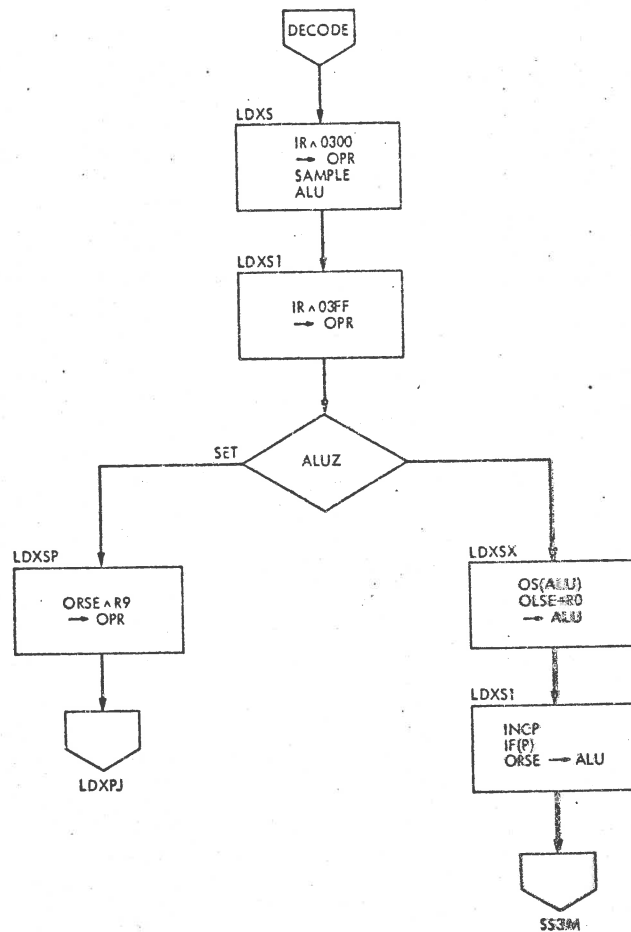




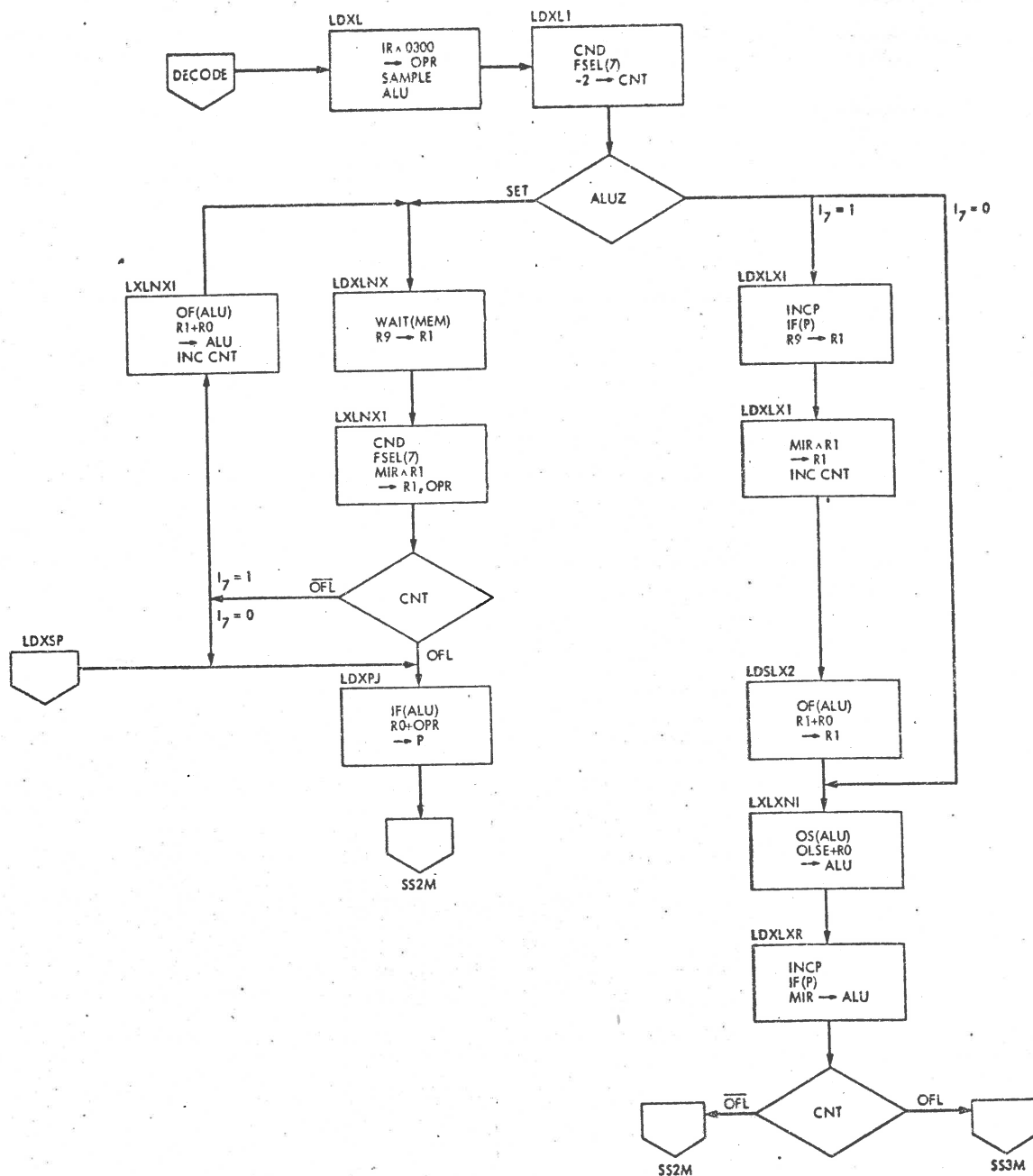




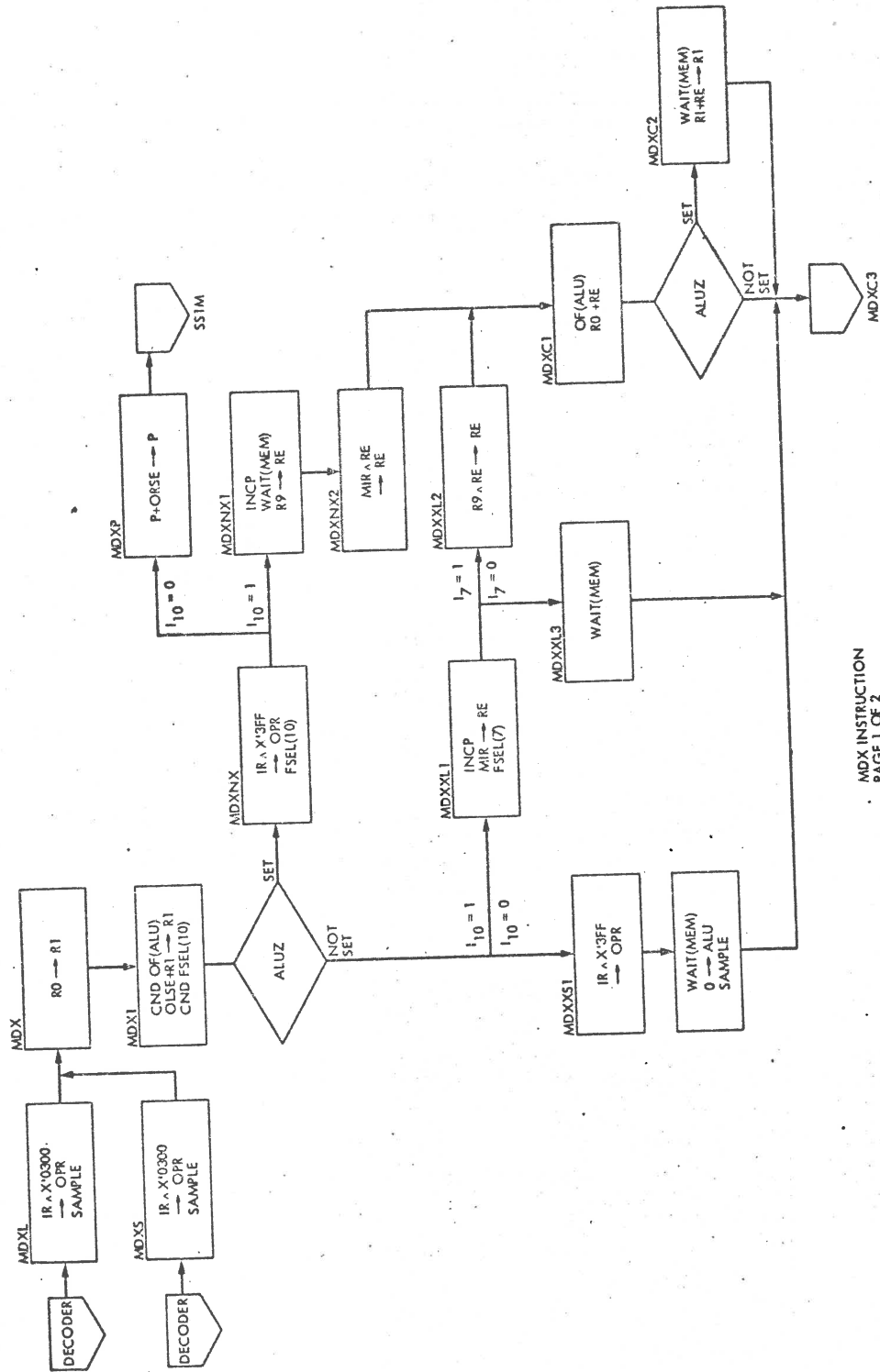
LDS  
BOTH FORMATS

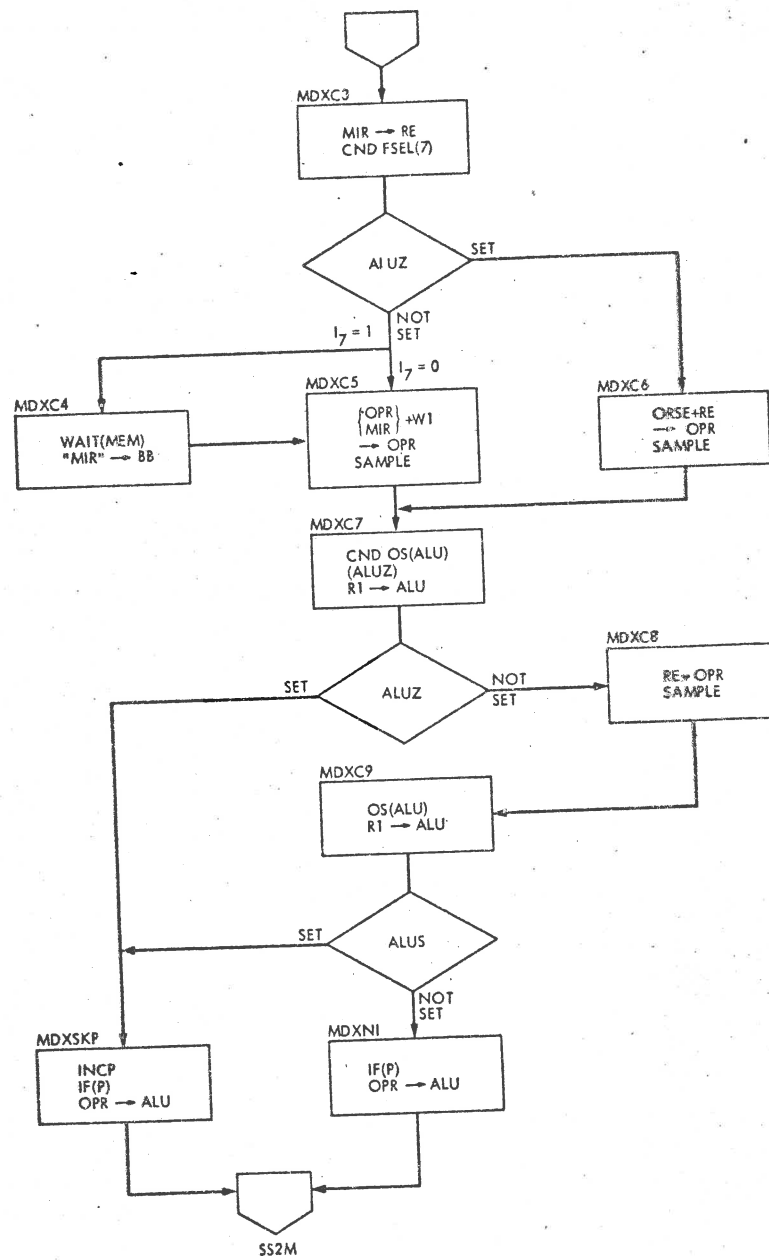


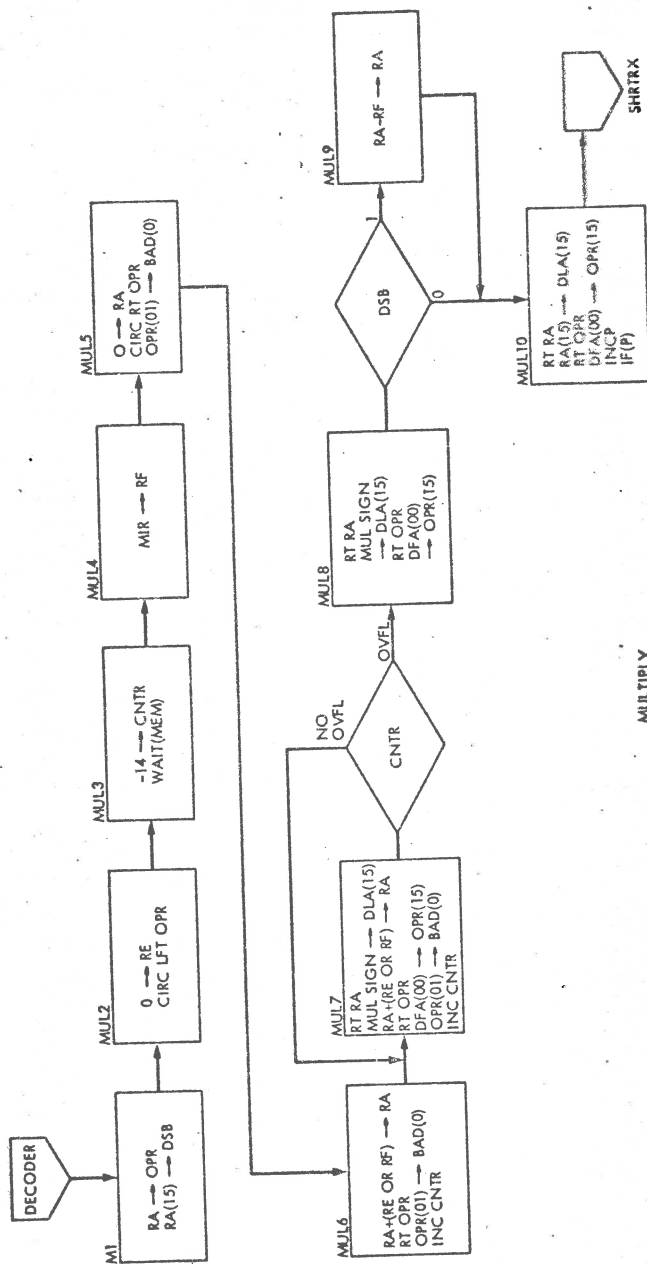
LDX  
SHORT FORMAT

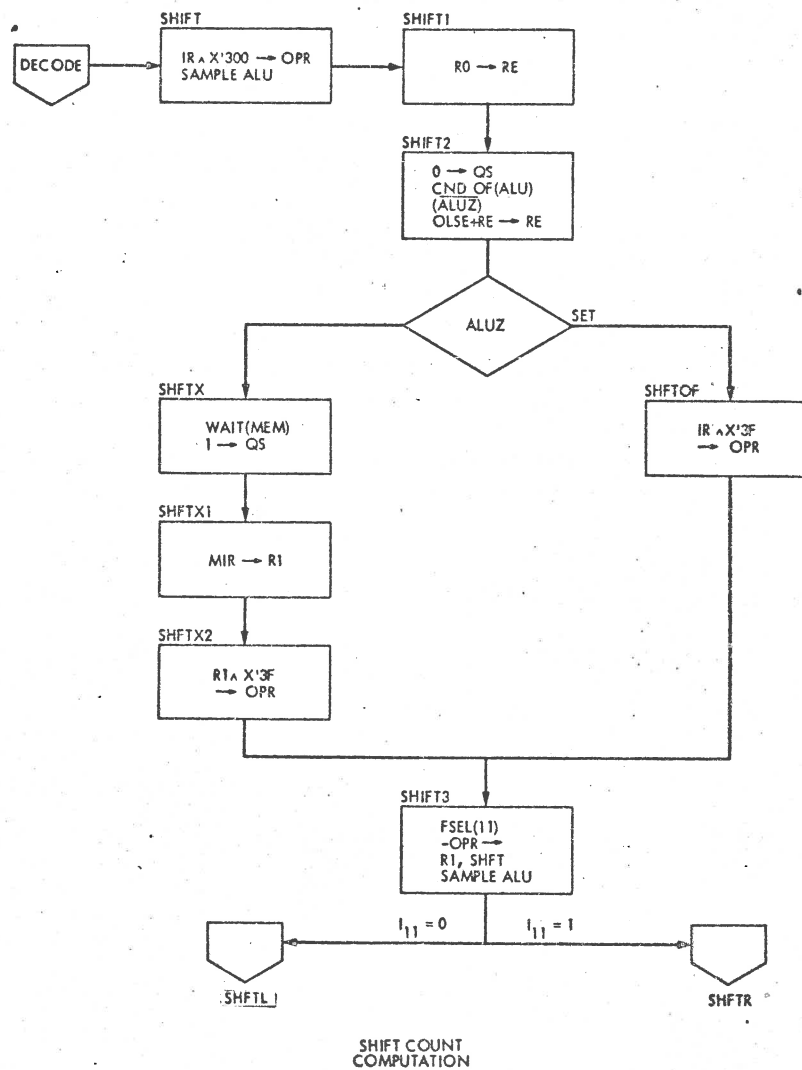


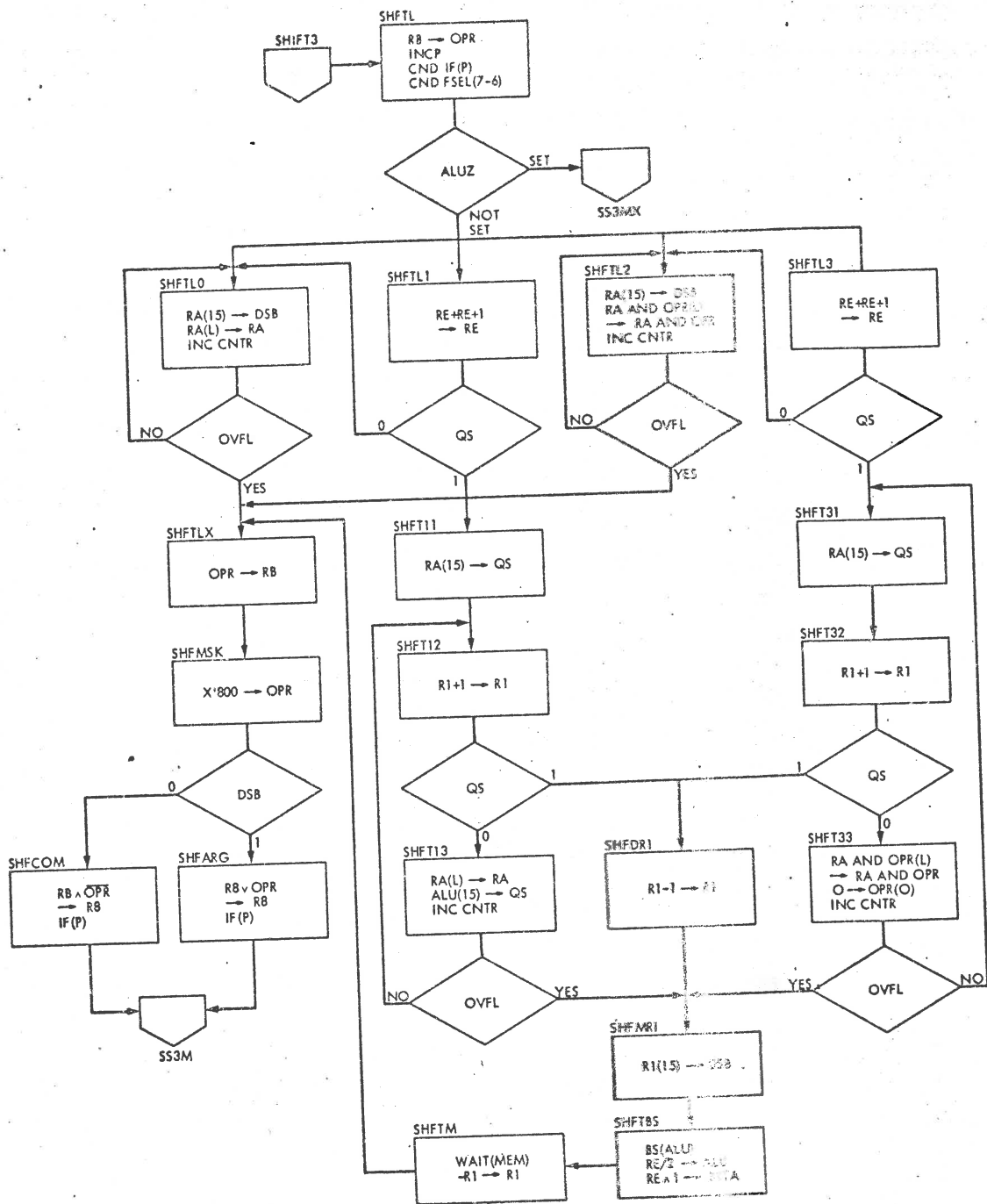
LDX  
LONG FORMAT





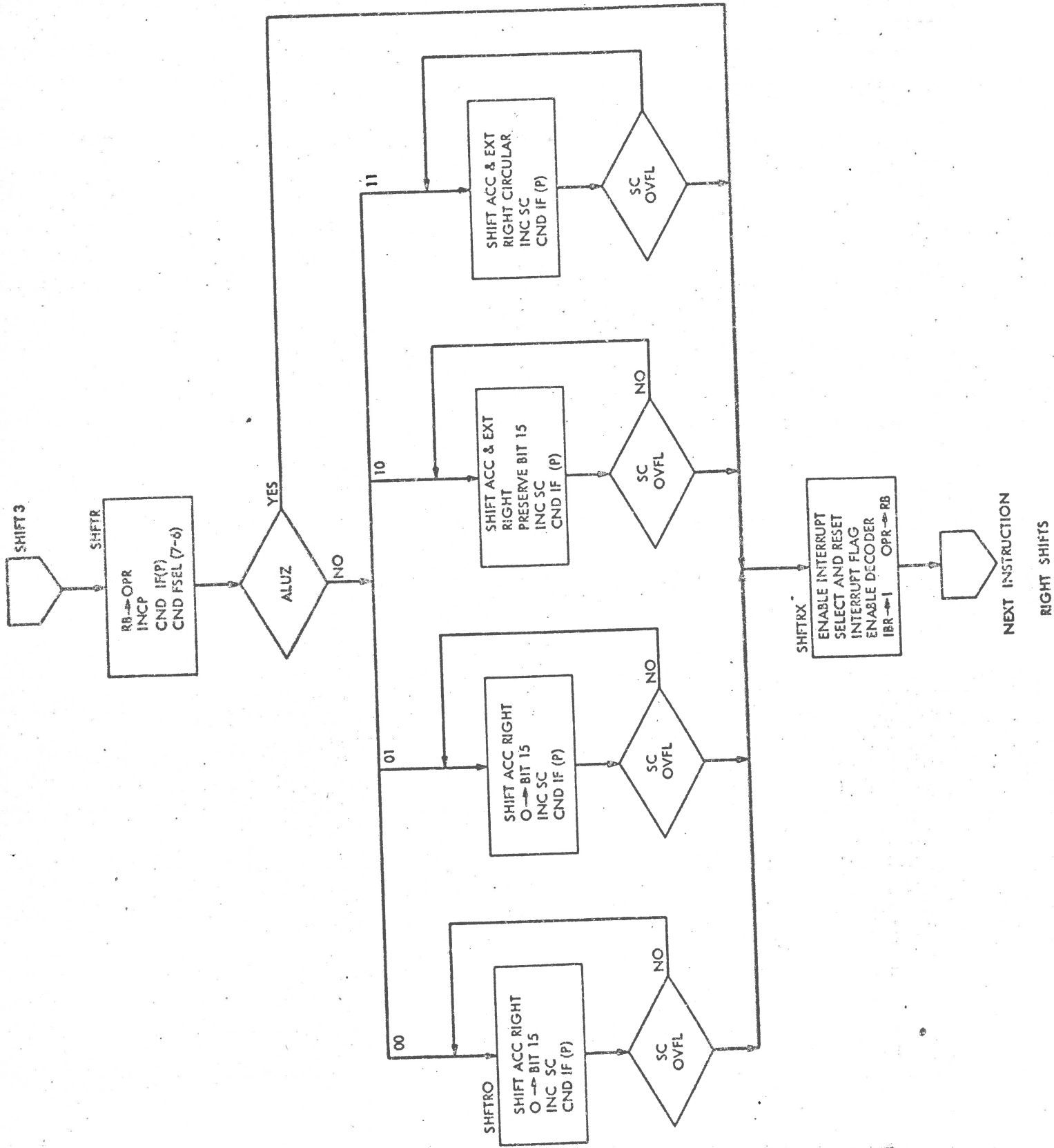


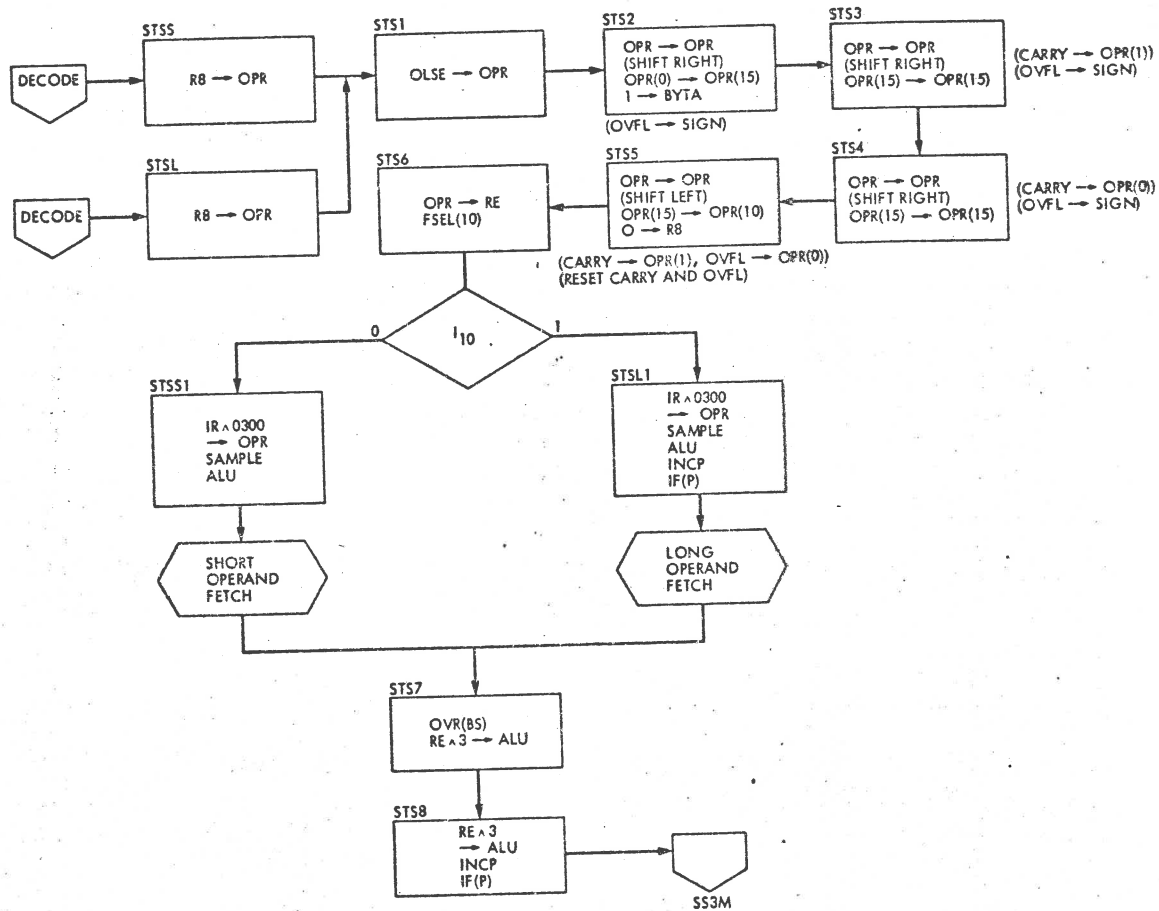




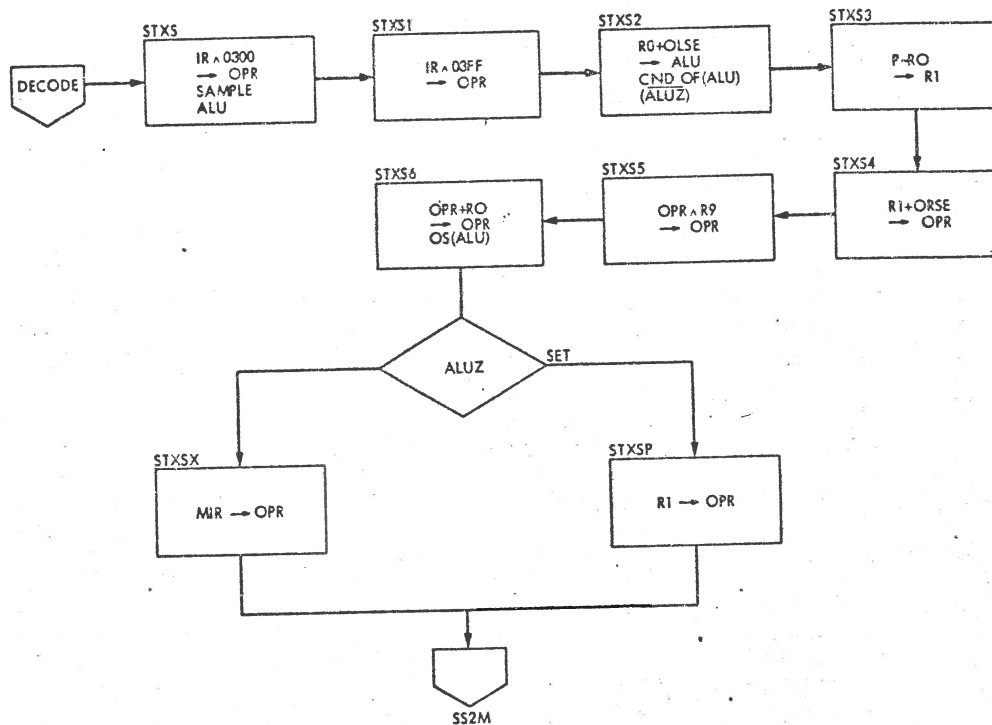
LEFT SHIFTS



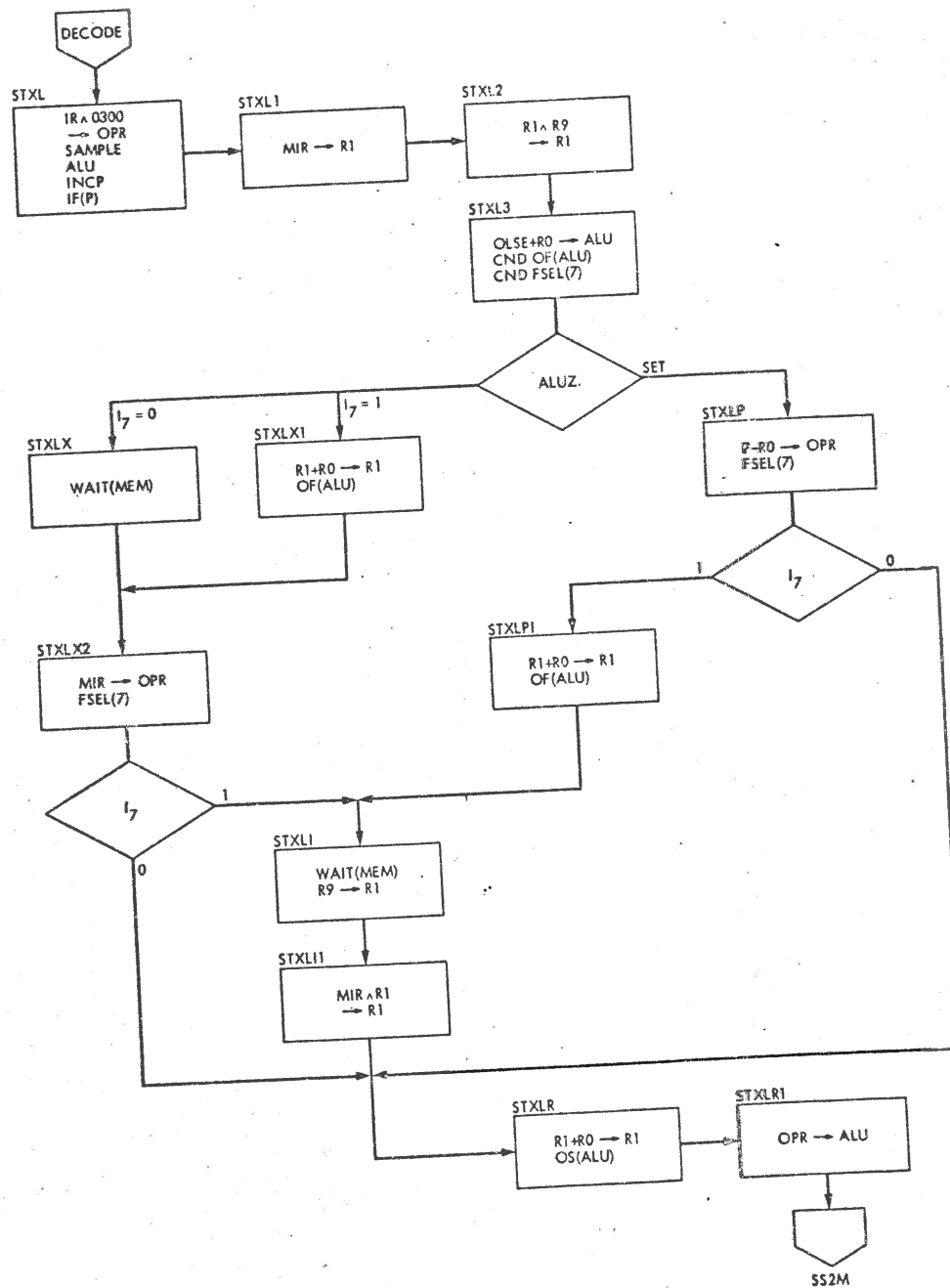




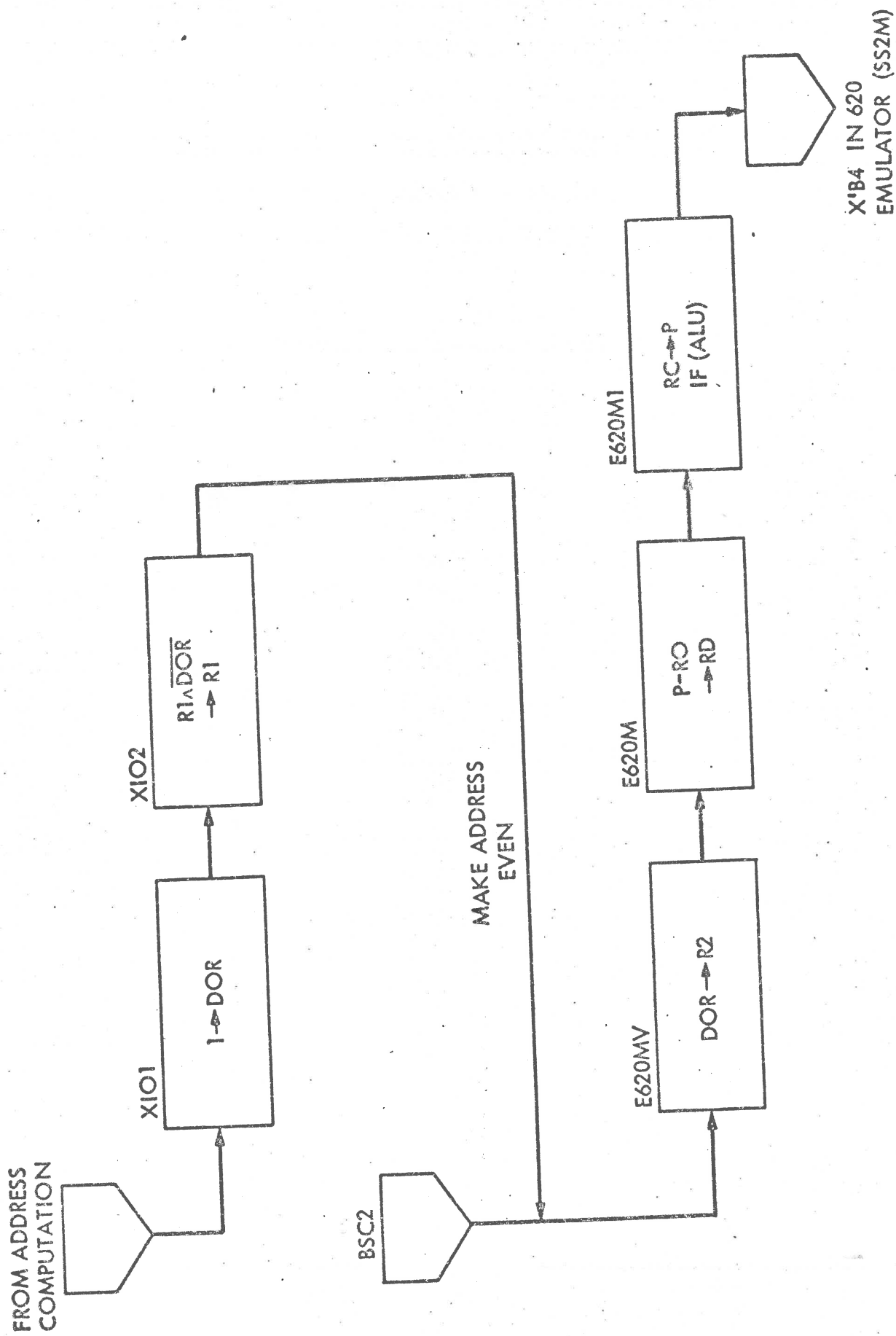
STS



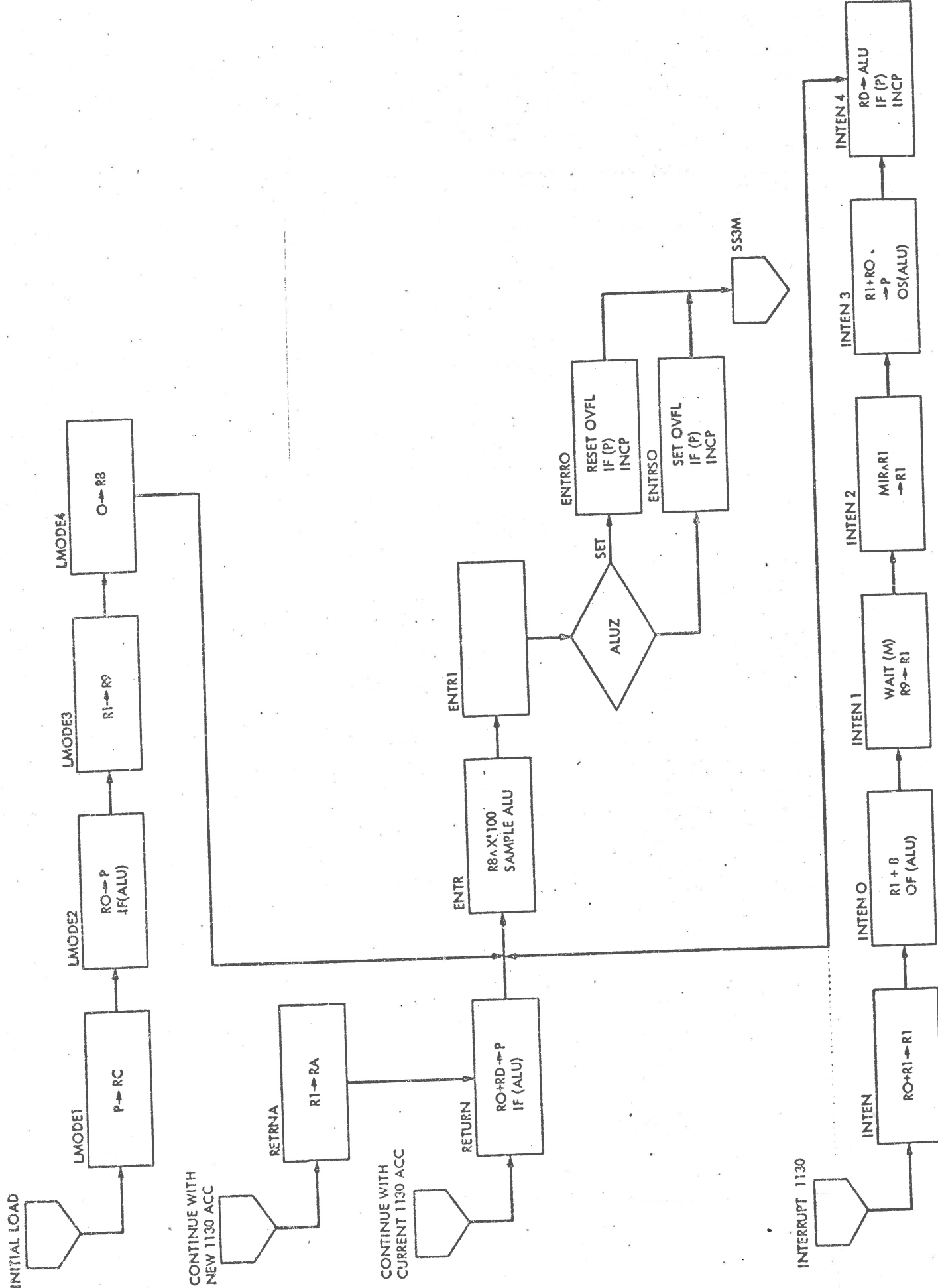
STX  
SHORT FORMAT

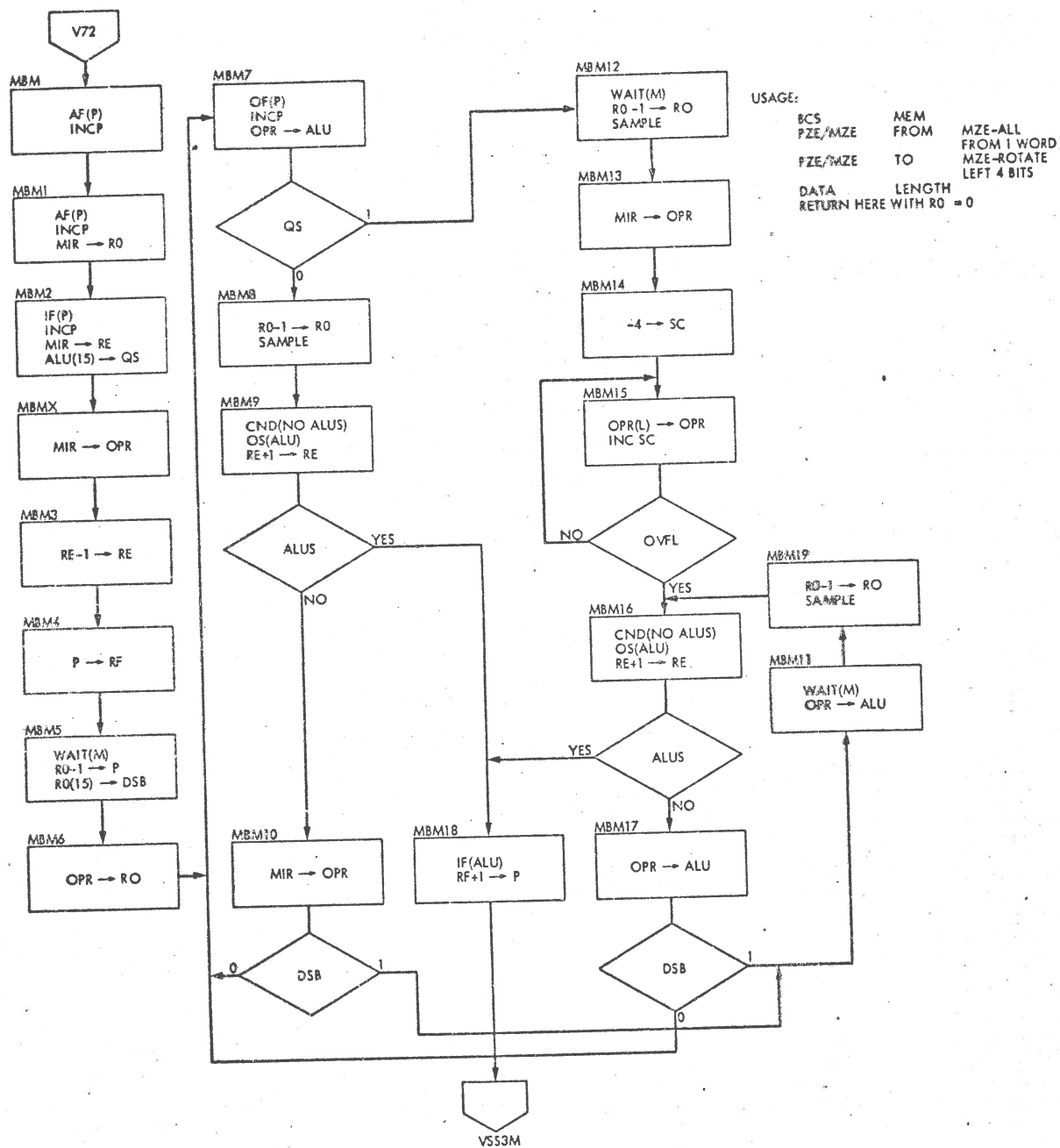


STX  
LONG FORMAT

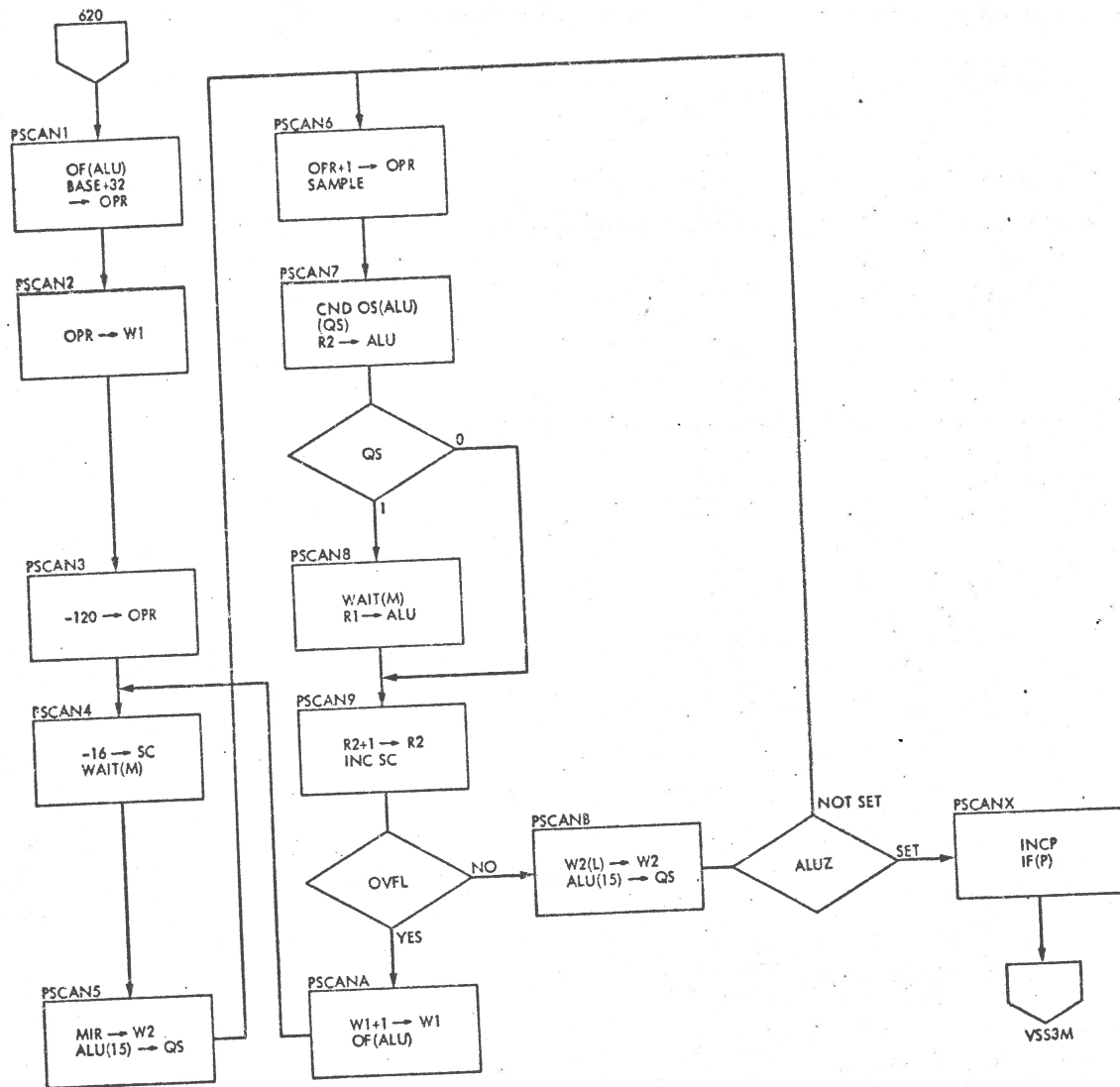


1130 → 620 COMMUNICATION



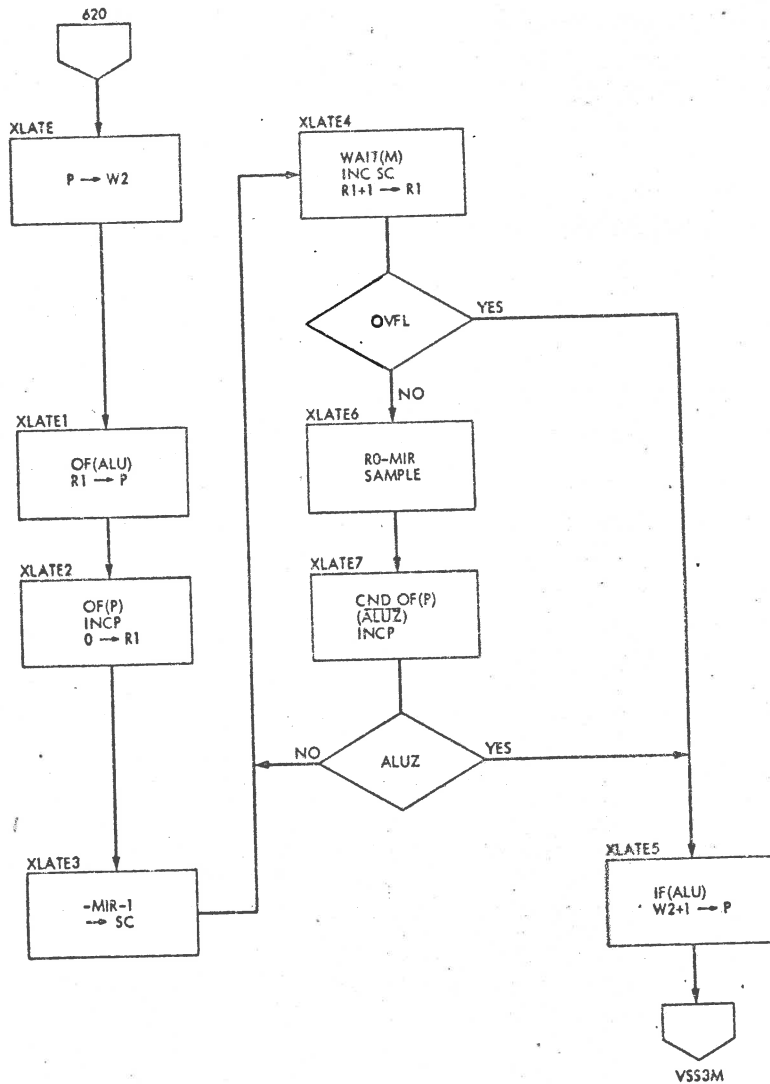


MEMORY-TO-MEMORY BLOCK MOVE  
FOR I/O SIMULATOR



PRINTER BITMAP SCAN  
FOR I/O SIMULATION





TRANSLATE  
FOR I/O SIMULATOR