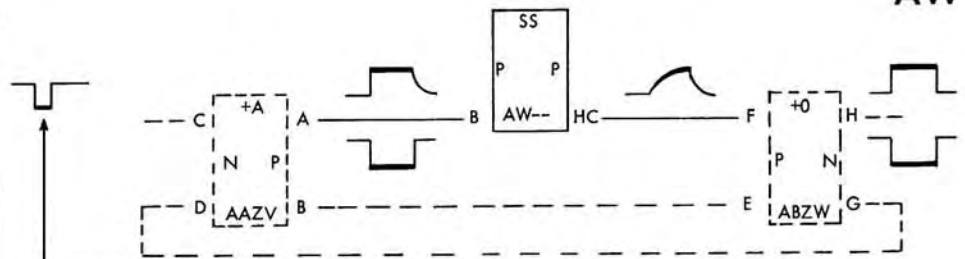
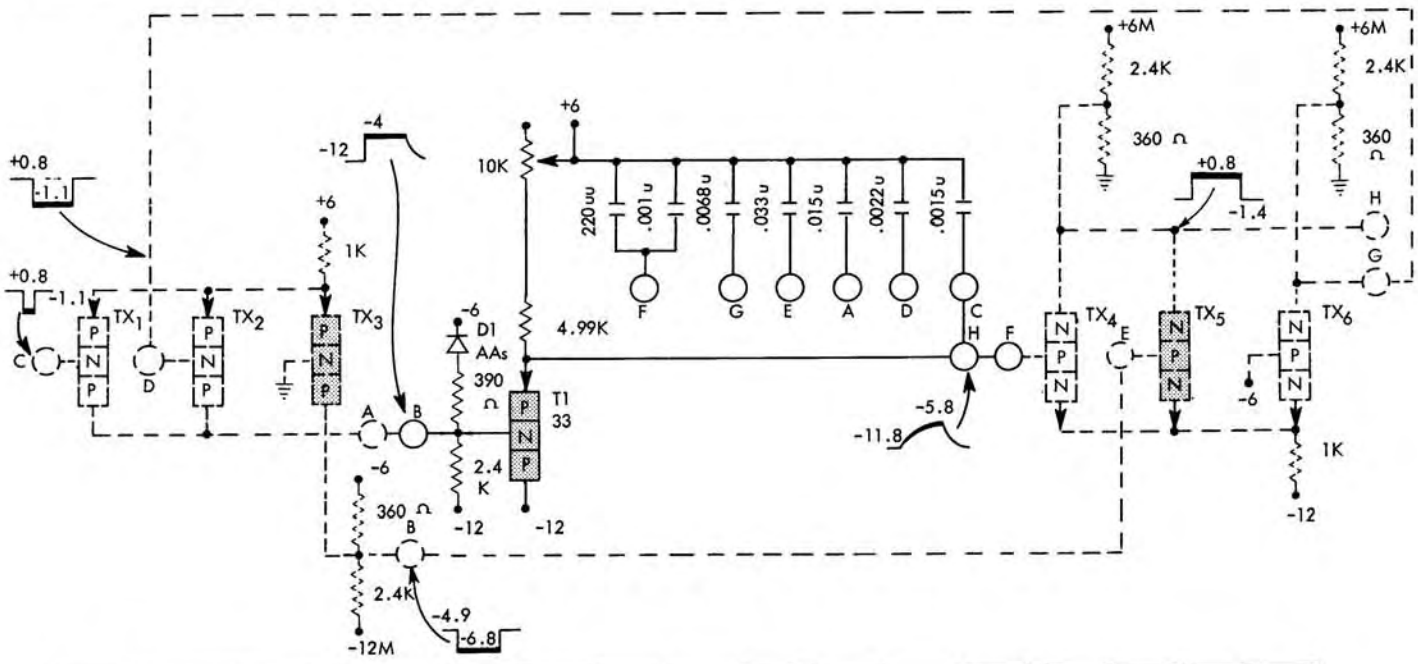


Many combinations of output pin use is possible. Specific jumpers connected to H alter the SS timing according to the chart below



The expanded time base illustrates that the fall at input C releases the AND circuit which starts the single shot timing. Input D is the OR circuit output coupled back to maintain the AND circuit off, until the single shot timing is complete



usec	From	3.2	4.0	5.8	7.5	9.9	13	18	24	31	40	52	70	93	118	160
	Timing	To	4.2	5.4	7.8	9.8	13	17.5	24.5	32	42	53	69	94	118	160
Connect to Pin H		F	C	D	F,C	C,D	F,C D	G	G,D	C,D F,G	A	A,C D,F	A,C,D F,G	E	C,D,E F,G	A,C,D E,F,G

Card Code	Part No.	Circuit Used as	Min Input Duration	Repetition Rate	Max Variation of Pulse Width
AW--	1039	SS	0.5 usec	A recovery time of 8% of T_* results in an output pulse of at least 95% of T_* T_* = Specific SS timing used	$\pm 15\%$, six months after initial setting (assuming all worst case conditions of temperature, components, power supplies, etc.)