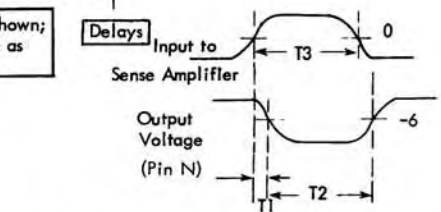


GH-- 371504

No. of Bits at Sense Amplifiers	VCK Input Current	Core Switched		Voltage at		VCK O'pt
		Core 1	Core 2	Y	Z	
0	0	No	No	-5	-7	+P
1	30	No	No	-5	-7	+P
2	60	Yes	No	-7	-7	-P
3	90	Yes	Yes	-7	-5	+P
4	120	Yes	Yes	-7	-5	+P
5	150	Yes	Yes	-7	-5	+P



T1 (Turn-on delay) = .10 to .38 us
 T2 = 1.8 us when T3 = 1.93 us.