

green for ground (grounded to the motor frame). When viewed from the lead end of the motor, rotation is counterclockwise when the phase sequence is 1-2-3.

When the motor is first installed, check for correct rotation (counterclockwise when viewed from the hinged end of the gate). Inspect the motor for excessive noise, heat, or vibration. Motor bearings are sealed and require no periodic lubrication. Motor mounting bolts must be tight to insure proper alignment between the motor and blower shafts.

To remove the motor: turn power off; then open the gate as far as possible. Take out the filters, remove the motor wire connections, and loosen the setscrew in the coupling on the motor shaft. Remove the motor mounting bolts and lift the motor from the frame. To replace the motor, reverse the removal procedure.

#### BLOWERS

Seven scroll, squirrel cage type blowers are used in the ventilating system (Figure 40).

Check at the top of the frame for good air flow through the gates. Check for excessive noise or vibration. Blower bearings are sealed and require no periodic lubrication. All eight 8-32 mounting bolts must be tight to insure correct alignment of the blower and motor shafts.

To remove the blowers: turn power off; then take out the filters and remove the setscrew in the coupling on the blower shaft. Remove the eight mounting bolts and lower the unit beneath the frame to the floor. Carefully slide the assembly from under the frame.

To replace a blower assembly, reverse the removal procedure. The unit has seven blowers mounted on a common shaft; care must be taken during installation so that no physical damage comes to either the blowers or the shaft.

#### FILTER

The ventilating system uses aluminum impingement type filters. Two filters are used for each motor-blower assembly.

Change filters periodically as specified in the scheduled maintenance routine card. If the filters appear to require changing more or less often than specified, note this change on the scheduled maintenance routine card. Insert the filter in the grooved metal holder properly to eliminate unnecessary noise.

To change filters: turn power off; then slide the old filter forward out of the metal holder on the bottom of the frame. The filters bend easily; when sliding in a new filter, use care not to damage it.

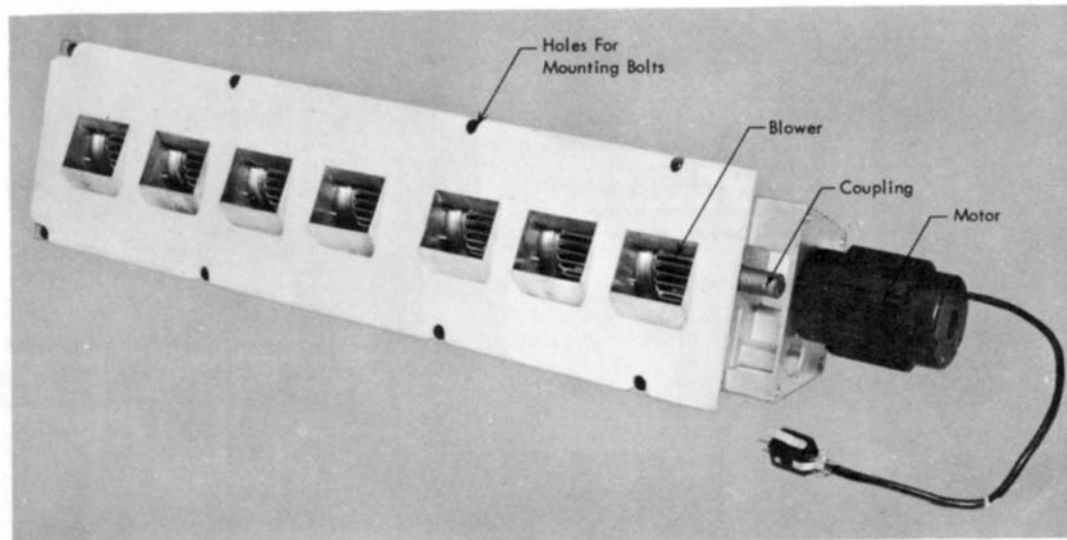


Figure 39. Motor-Blower Assembly

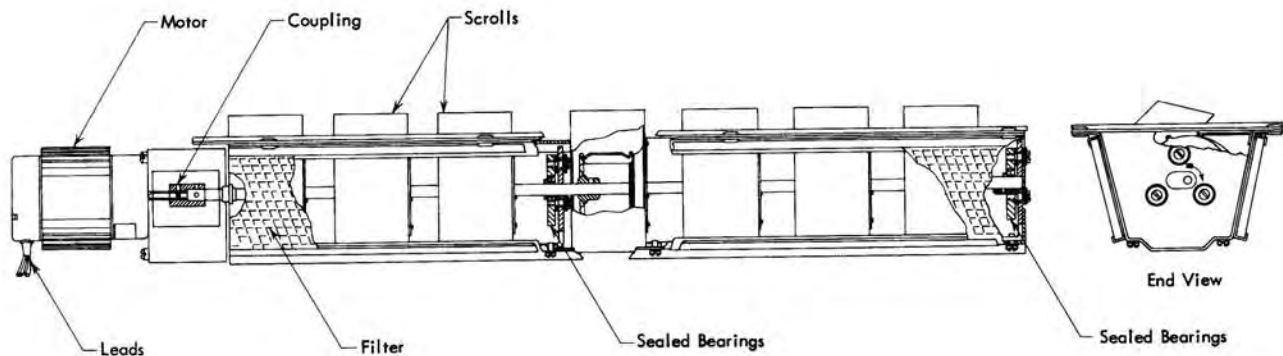


Figure 40. Motor-Blower Details