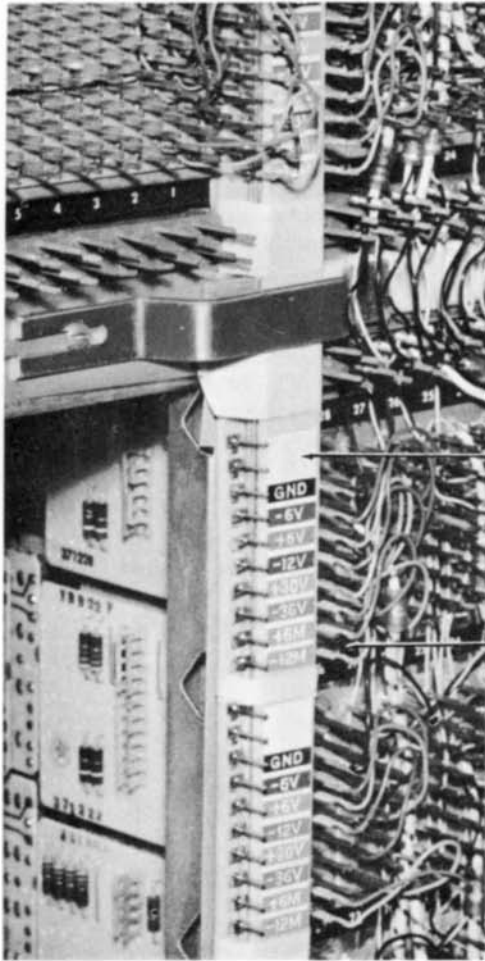


Voltage Distribution

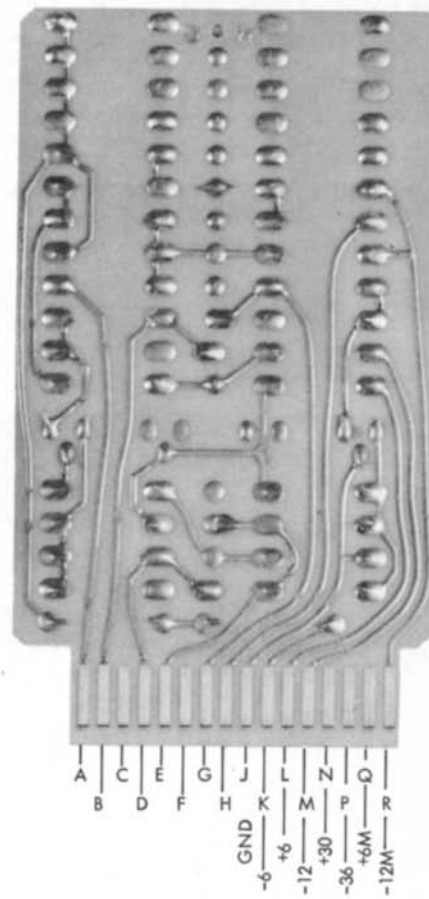


Laminar Bus Consists of Layers of Copper Strips Separated by Mylar® Insulation.

*Trademark of E. I. du Pont de Nemours & Co. (Inc.)

Terminals for Attaching Spring Crimped Connectors from Laminar Bus to Card Receptacles

Laminar Bus Power Distribution



WIRING SIDE

Voltage Contact Assignment to Typical SMS Card

Service Wiring Standard Color Code

VOLTAGE	WIRE COLOR CODE	VOLTAGE	WIRE COLOR CODE	VOLTAGE	WIRE COLOR CODE
+82 IND	Red	+12M	White	-12	Violet
+60	White, red tracer	+6	Orange	-12M	Aqua
+48	White, black tracer	+6M	Tan	-18 IND	White, brown tracer
+30	Pink	Ground	Black	-20	White, violet tracer
+30M	Pink, black tracer	-6	Blue	-36	Brown
+12	Gray	-6 Sp	White, blue tracer	-48	White, orange tracer