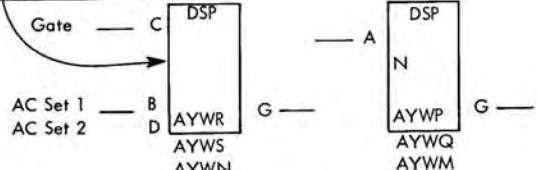
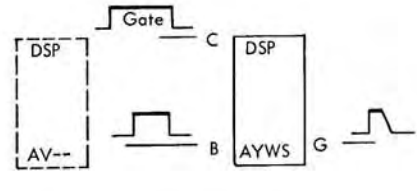


AYWM
WN
WP
WQ
WR
WS

Line Types used are Function of Driving and Loading Circuits

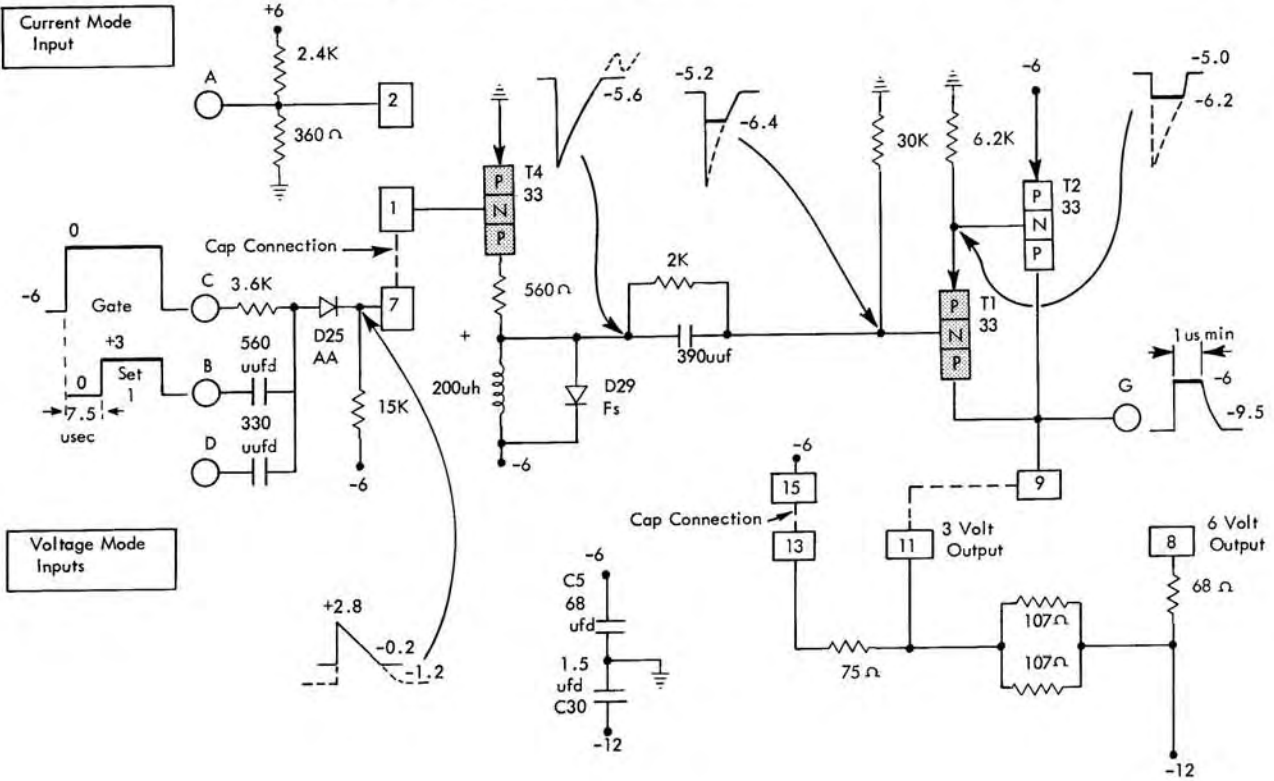


Possible ALD Configurations



Logic Application

Current Mode Input



Voltage Mode Inputs

Card Code	Part No.	Cap Connections Used	Coupling Input Used	Collector Loading	Input Waveforms		Max Rise Time	Repetition Rate(Max)	Output Waveforms			
					Min	Max			At Pin G For:			
AYWM	371426	1 to 2	CM	None	Gate Pin C	-0.2	0			3 Volt Output		
						-5.56	-12.48			Min	Max	
AYWN	371425	1 to 7	VM	None	Voltage Mode Inputs					-6.54	-6.06	
AYWP	371044	1 to 2 9 to 8	CM	Yes(6v)		AC Set 1 Pin B	2.6v	3.4v	1.0us for 2.6v Shift	150KC	-8.72	-9.64
AYWQ	371043	1 to 2 9 to 11 13 to 15	CM	Yes (3v)		AC Set 2 Pin D	5.56v	6.2v	1.4us for 5.6v Shift	200KC	6 Volt Output	
										Min	Max	
AYWR	371042	1 to 7 9 to 8	VM	Yes (6v)	Current Mode Input					-6.54	-6.06	
AYWS	371041	1 to 7 9 to 11 13 to 15	VM	Yes (3v)		Pin A	+0.4	+1.2	1.0us for 0.5v Shift	200KC	-11.76	-12.48

Rise Time (Max) = 0.9us
Pulse Duration = 1.0us (Nom)