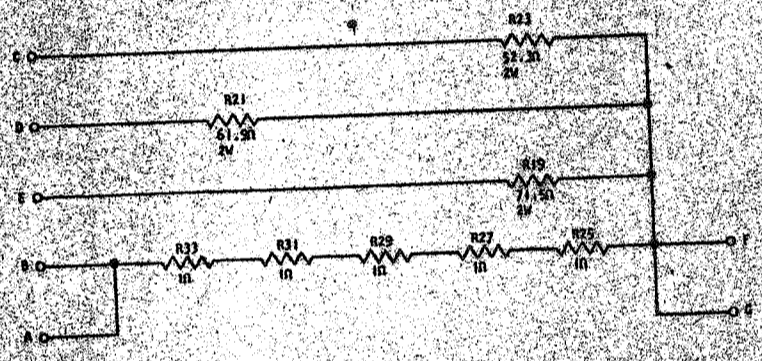
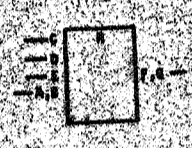


729807

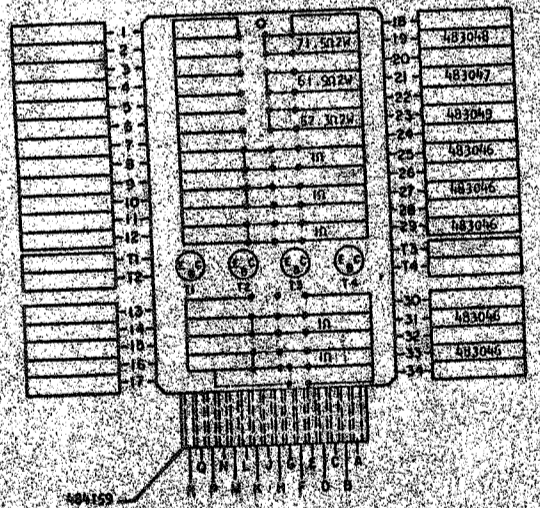
729807  
A K C

**REFERENCE DRAWING**  
SEE PRODUCTION DRAWING 370426

**MEMORY EMITTER RESISTORS**



- SEQUENCE OF OPERATION**
1. CARD CONTAINS PORTION OF EMITTER RESISTANCE OF A MEMORY CONSTANT CURRENT DRIVE SOURCE
  2. RESISTORS LOCATED BETWEEN EMITTER AND EMITTER RETURN VOLTAGE ARE SWITCHED OUT OF CIRCUIT AS TEMPERATURE INCREASES



COMPONENT SIDE

CIRCUIT AND PACKAGING STANDARDS	
APPROVAL	DATE
ABC	4-2-62

INTERNATIONAL BUSINESS MACHINES CORP.	DATE	CHANGE NO.	APPROVAL	DATE	CHANGE NO.	APPROVAL	DEVELOPMENT NO.
MEMORY CARD AND TEST - MEMORY	4-2-62	1					729807
EMITTER RESISTORS							
DESIGNED BY	DATE	BY	DATE	BY	DATE	BY	
CHECKED BY	DATE	BY	DATE	BY	DATE	BY	

729807

7