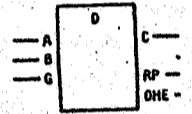
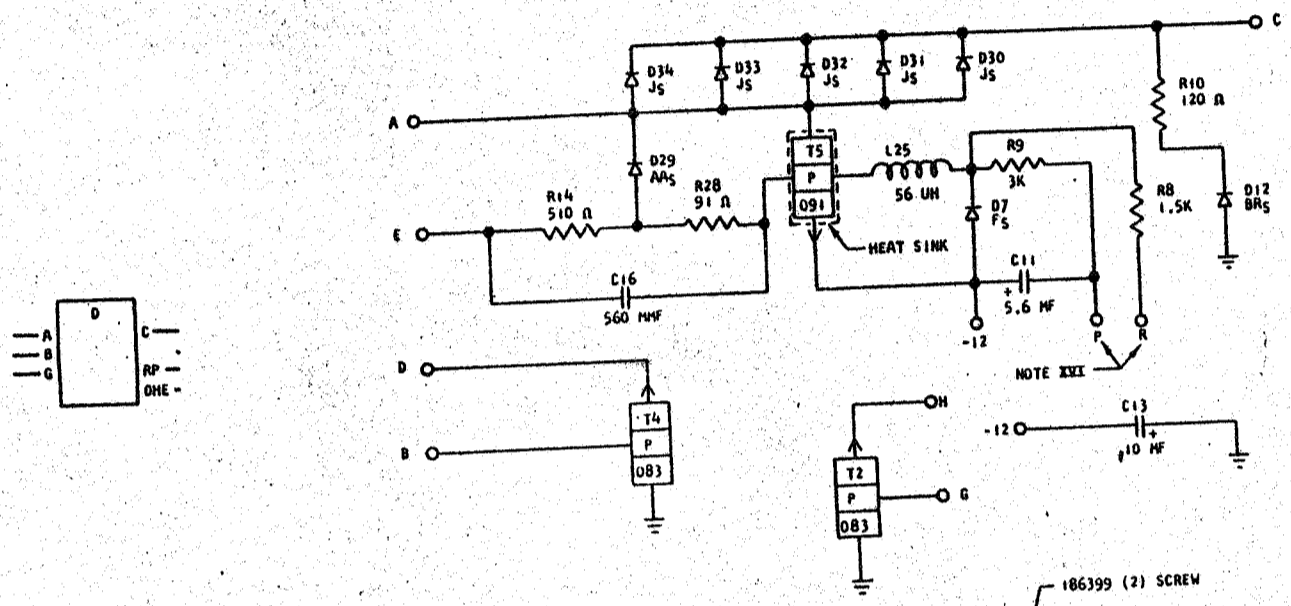


729858
STANDARDS CODE

CARD CODE 729858
DKA-

REFERENCE DRAWING
SEE PRODUCTION DRAWING 370443

ALLOY-DRIVER, CURRENT

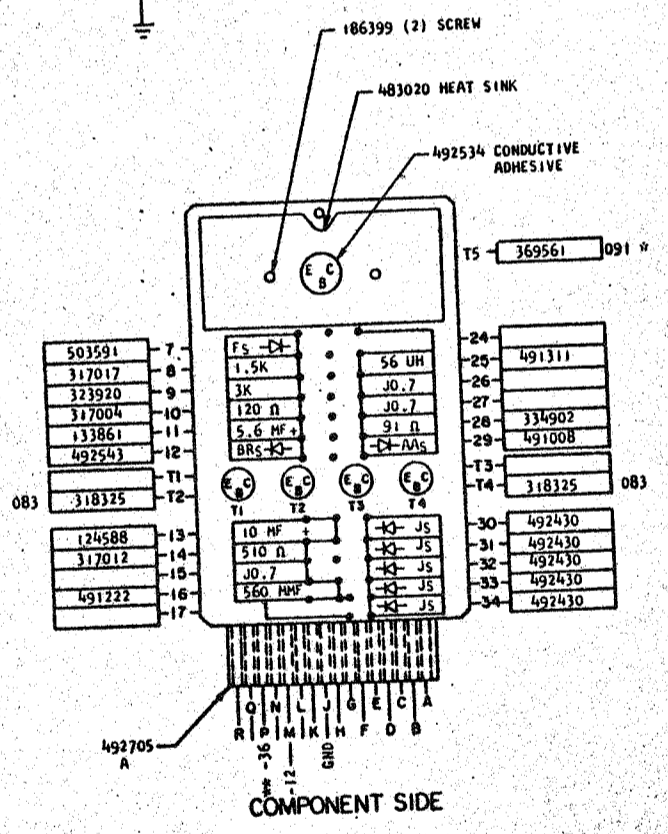


- SEQUENCE OF OPERATION
1. H, D, E TIED TOGETHER
 2. DOWN OUTPUT AT B, G, T4, T2 OFF, BASE OF T5 GOES TO A MINUS LEVEL AND OFF
 3. WITH T5 OFF ITS COLLECTOR IS AT PLUS LEVEL; THIS FORWARD BIAS THE DIODES D30 TO 34 ALLOWING CURRENT TO FLOW

NOTE: FOR -36V USE AS IS, FOR -20V, JUMPER BACK PANEL PINS "P" AND "R"

PINS	SIGNAL NAME	WAVE SHAPE	LEVELS	
			MIN	MAX
B	U	ACTIVATE STORAGE	UP -5.26	0.24
			DOWN -7.44	-12.5
G	U	INPUT	UP -5.26	0.24
			DOWN -7.44	-12.5
A		+34		
A		GROUND		

- DELAY
1. TURN-ON DELAY SHALL BE MEASURED FROM THE 90% POINT OF THE FALL OF THE INPUT PULSE TO THE 90% POINT ON THE RISE OF THE OUTPUT PULSE AS MEASURED ACROSS R_L AND SHALL BE NOT GREATER THAN 200 NANO SECONDS.
 2. TURN-OFF DELAY SHALL BE MEASURED FROM THE 10% POINT ON THE RISE OF THE INPUT PULSE TO THE 10% POINT ON THE FALL OF THE OUTPUT PULSE AS MEASURED ACROSS R_L AND SHALL BE NOT GREATER THAN 100 NANO SECONDS.



CIRCUIT AND PACKAGING STANDARD	
APPROVAL	DATE
ABC	4-2-62

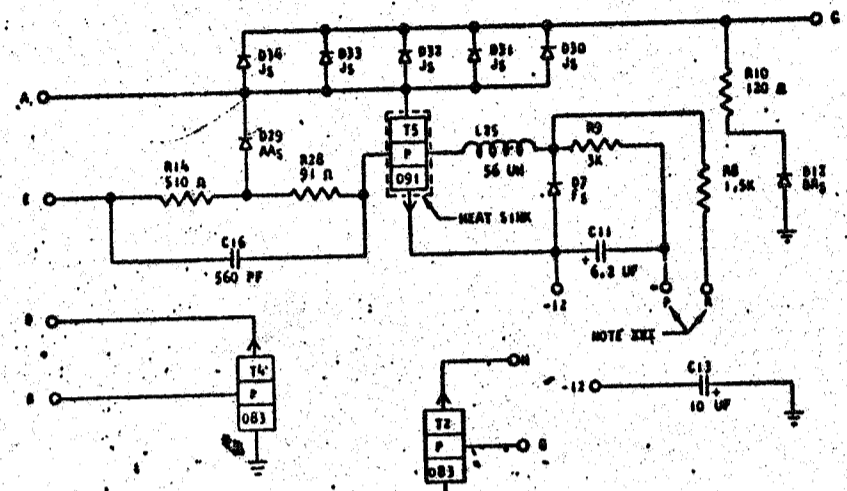
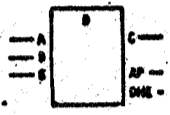
INTERNATIONAL BUSINESS MACHINES CORP.		DATE	CHANGE NO.	APPROVAL	DATE	CHANGE NO.	APPROVAL	DEVELOPMENT NO.
NAME CARD ASM TSTR-ALLOY-CURRENT DRIVER		6-27-62	115599					729858
DESIGN	RQ	3-1-62	SCALE	NONE				
CHECK	MH	3-1-62	DRAW	LIG 3-17-62				
APPROV			CHECK					

729858
STANDARD CODE

6480 0005 729858
D K A -

REFERENCE DRAWING
SEE PRODUCTION DRAWING 370443

ALLOY-DRIVER, CURRENT

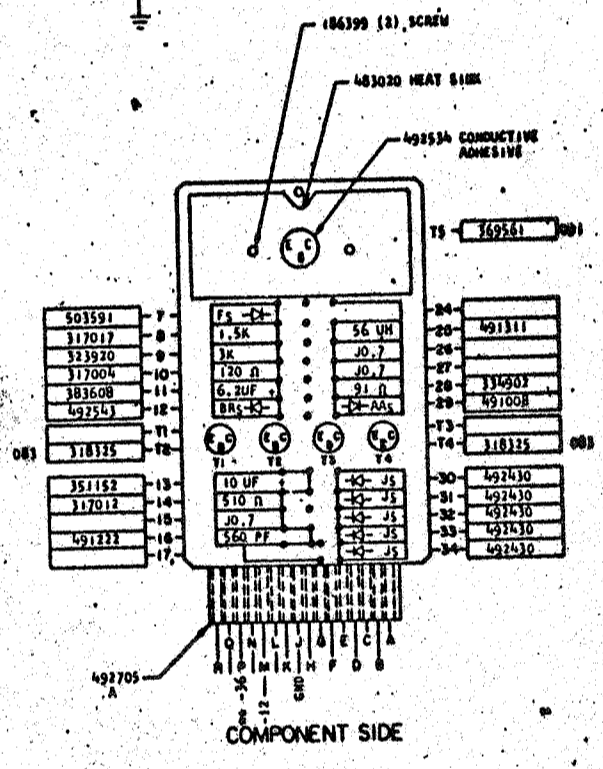


- SEQUENCE OF OPERATION
1. N, D, E TIED TOGETHER
 2. DOWN OUTPUT AT B, C, T4, T5 OFF, BASE OF T5 GOES TO A MINUS LEVEL AND OFF
 3. WITH T5 OFF ITS COLLECTOR IS AT PLUS LEVEL; THIS FORWARD BIASES THE DIODES D30 TO 34 ALLOWING CURRENT TO FLOW

NOTE: FOR -15V USE AS IS, FOR -10V, JUMPER BACK PANEL PINS 11 AND 12

PINS	SIGNAL NAME	WAVE SHAPE	LEVELS	
			MIN	MAX
B	U	ACTIVATE STORAGE	UP -5.26	0.24
			DOWN -7.44	-12.5
G	U	INPUT	UP -5.26	0.24
			DOWN -7.44	-12.5
A		+34		
A		GROUND		

- DELAY
1. TURN-ON DELAY: SHALL BE MEASURED FROM THE 90% POINT OF THE FALL OF THE INPUT PULSE TO THE 90% POINT ON THE RISE OF THE OUTPUT PULSE AS MEASURED ACROSS R₉ AND SHALL BE NOT GREATER THAN 200 NANO SECONDS.
 2. TURN-OFF DELAY SHALL BE MEASURED FROM THE 10% POINT ON THE RISE OF THE INPUT PULSE TO THE 10% POINT ON THE FALL OF THE OUTPUT PULSE AS MEASURED ACROSS R₉ AND SHALL BE NOT GREATER THAN 100 NANO SECONDS.



CIRCUIT AND PACKAGING STANDARDS	
APPROVAL	DATE
ABC	4-2-62

INTERNATIONAL BUSINESS MACHINES CORP.	DATE	CHARGE NO.	APPROVAL	DATE	CHARGE NO.	APPROVAL	DEVELOPMENT NO.
NAMEI CARD RSM TSTR-ALLOY-CURRENT DRIVER	6-29-62	115599					729858
	1-3-63	EC118034					
	30-4-63	TF 83687					
DESIGN	3-1-62	MODEL	SNS P				
DETAIL	3-1-62	RECALL	NONE				
CHECK	3-1-62	DRAW	LIG 13-17-62				
APPD		CHECK					

729858