

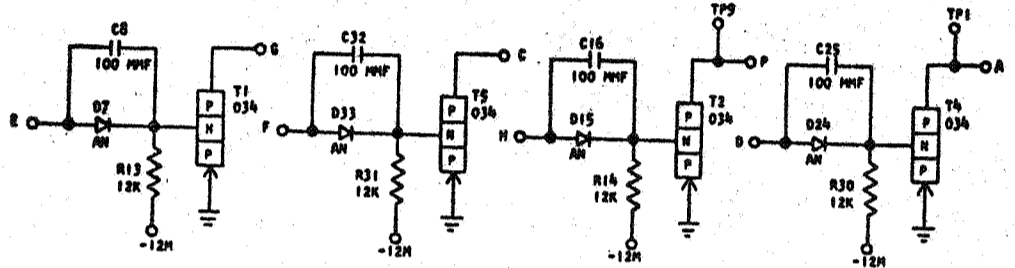
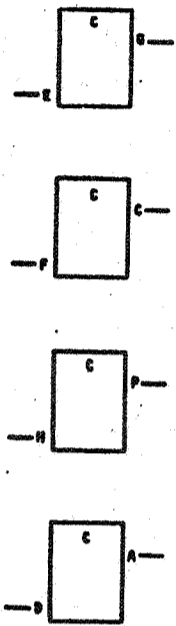
729864

729864  
JF --

REFERENCE DRAWING

SEE PRODUCTION DRAWING 371579

CTOL - HIGH SPEED ONE WAY PNP NO LOADS



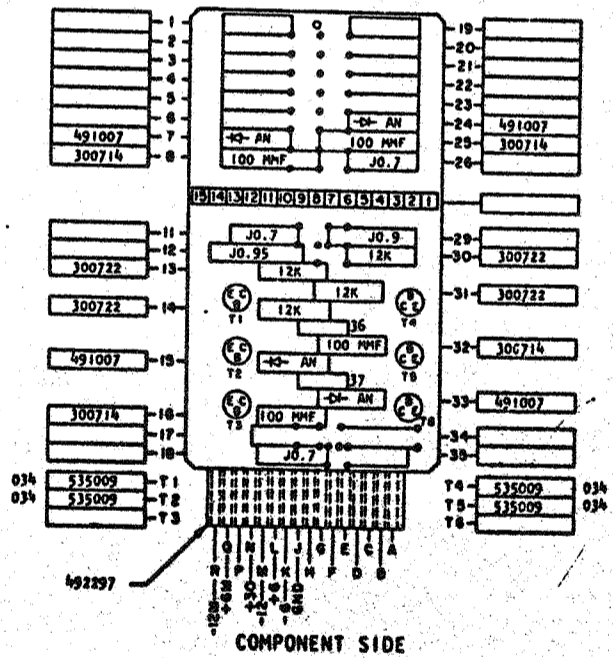
SEQUENCE OF OPERATION

1. WHEN THE INPUT IS UP, THE TRANSISTOR IS OFF, THE OUTPUT IS DOWN
2. WHEN THE INPUT IS DOWN, THE TRANSISTOR IS ON, THE OUTPUT IS UP
3. ALL OUTPUTS MUST BE COLLECTOR LOADED
4. LOGIC BLOCKS MAY HAVE SYMBOLS OTHER THAN SHOWN

PINS	SIGNAL NAME	WAVE SHAPE	LEVELS	
			MIN	MAX
B, F, H, D	T INPUT		UP	1.44 6.24
			DOWN	-7.4 -6.24
B, C, F, A	U OUTPUT		UP	-7.44 -2.4
			DOWN	-7.44 -12.48

DELAY - USEC

	MINIMUM	MAXIMUM
TURN ON	0.05	0.25
TURN OFF	0.10	0.40



COMPONENT SIDE

CIRCUIT AND PACKAGING STANDARD	
APPROVAL	DATE
ABC	4-2-62

INTERNATIONAL BUSINESS MACHINES CORP.	DATE	CHANGE NO.	APPROVAL	DATE	CHANGE NO.	APPROVAL	DEVELOPMENT NO.
NAME: CRAD ASM TSTR-CTOL - HIGH SPEED 1 WAY PNP NO LOADS	6-27-62	115599					
DESIGN: 30.4.63		7783607					
DEVAL: 30-1-62	SCALE: NONE						
CHECK: 30-1-62	DRAP: LIG 9-17-62						
APPRO: 30-1-62	CHECK:						

C

729864