

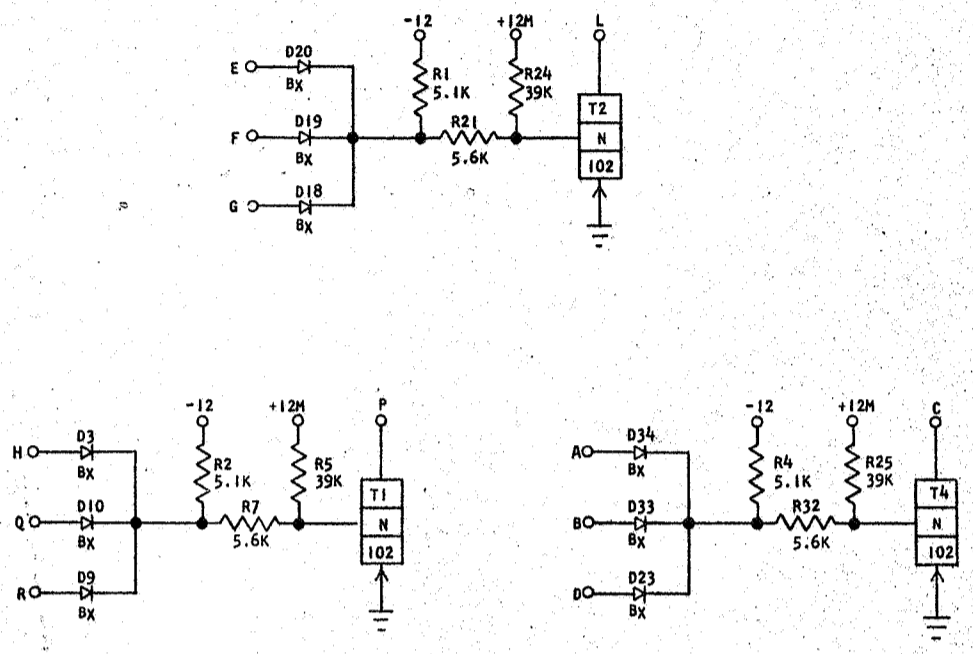
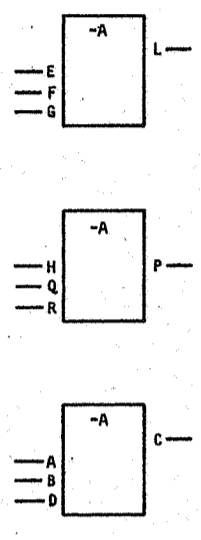
729916

STANDARDS CODE

CARD CODE 729916  
D G W -

**REFERENCE DRAWING**  
SEE PRODUCTION DRAWING 370377

**SDTD L 3-WAY LOGIC BLOCK LOW SPEED WITHOUT LOADS**



**SEQUENCE OF OPERATION**

1. ALL INPUTS DOWN TRANSISTOR ON OUTPUT UP
2. ANY INPUT UP TRANSISTOR OFF OUTPUT DOWN
3. COLLECTORS MUST BE LOADED
4. LOGIC BLOCKS MAY HAVE SYMBOLS OTHER THAN SHOWN.

PINS	SIGNAL NAME	WAVE SHAPE	LEVELS	
			MIN	MAX
E, H, A	Y INPUT	[Waveform]	UP	-0.65 - -1
F, Q, B	Y INPUT	[Waveform]	DOWN	-5.81 - -8.8
G, R, D	Y INPUT	[Waveform]	UP	-0.65 - -1
L, P, C	Y OUTPUT	[Waveform]	DOWN	-5.81 - -8.8

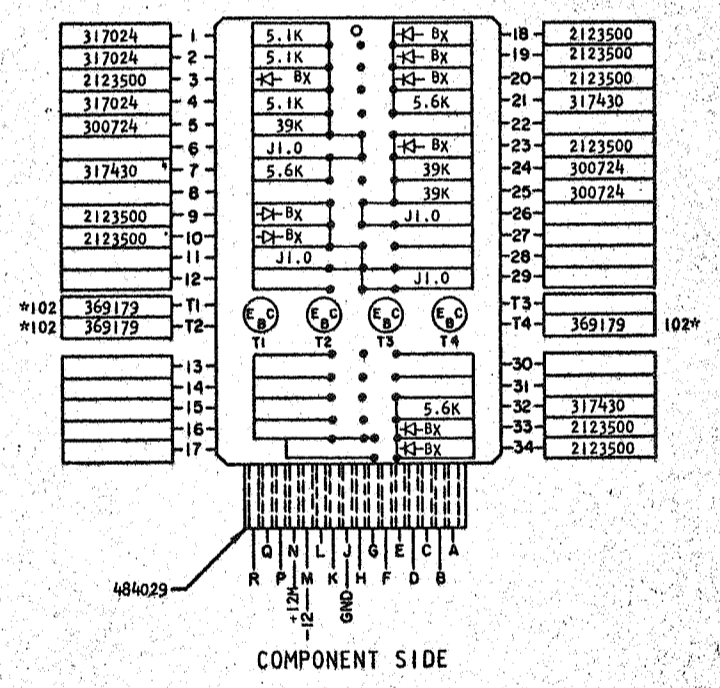
DELAY: SDTD L - LOW SPEED

LOGIC BLOCK WITH 560 OHM COLLECTOR RESISTOR

	MIN.	MAX.
TURN ON (NSEC)	75	100*
TURN OFF (NSEC)	40	200**

\*THIS DELAY CAN INCREASE TO 200 NSEC WHEN THE DRIVING BLOCK HAS 6.2K COLLECTOR RESISTOR RETURNED TO -12V.

\*\*THIS DELAY CAN INCREASE TO 350 NSEC WHEN THE DRIVING BLOCK OR THE BLOCK THAT DRIVES THE DRIVING BLOCK HAS 6.2K COLLECTOR RESISTOR RETURNED TO -12V.



COMPONENT SIDE

CIRCUIT AND PACKAGING STANDARD	
APPROVAL	DATE
ABC	4-2-62

INTERNATIONAL BUSINESS MACHINES CORP.				DATE	CHANGE NO.	APPROVAL	DATE	CHANGE NO.	APPROVAL	DEVELOPMENT NO.
NAME	CARD ASM	TSTR-SDTD L	3-WAY	4-2-62	115599					
LOGIC BCK	LOW SPEED	WITHOUT LOADS								
DESIGN		MODEL	SHS							
DETAIL	RQ	B-1-62	SCALE	NONE						
CHECK	WH	3-1-62	DRAW	LIG	3-17-62					
APPRO		CHECK								

729916

729916

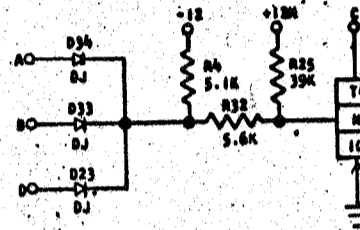
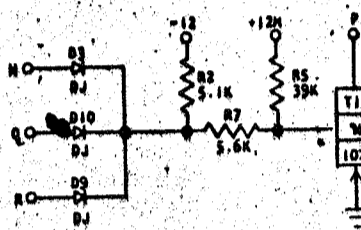
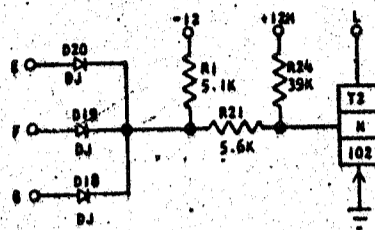
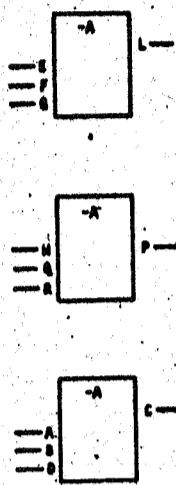
STANDARD CODE

CARD CASE 729916  
D G W -

REFERENCE DRAWING

SEE PRODUCTION DRAWING 370377

SOTDL 3-WAY LOGIC BLOCK LOW SPEED WITHOUT LOADS



SEQUENCE OF OPERATION

1. ALL INPUTS DOWN TRANSISTOR ON OUTPUT UP
2. ANY INPUT UP TRANSISTOR OFF OUTPUT DOWN
3. COLLECTORS MUST BE LOADED
4. LOGIC BLOCKS MAY HAVE SYMBOLS OTHER THAN SHOWN.

PINS	SIGNAL NAME	WAVE SHAPE	LEVELS	
			MIN	MAX
E, F, G	INPUT	[Waveform: low level]	UP	-0.65 - -0.1
H, A, B	INPUT	[Waveform: high level]	DOWN	-5.81 - -8.8
A, B, C	INPUT	[Waveform: high level]	UP	-0.65 - -0.1
L, P, C	OUTPUT	[Waveform: high level]	DOWN	-5.81 - -8.8

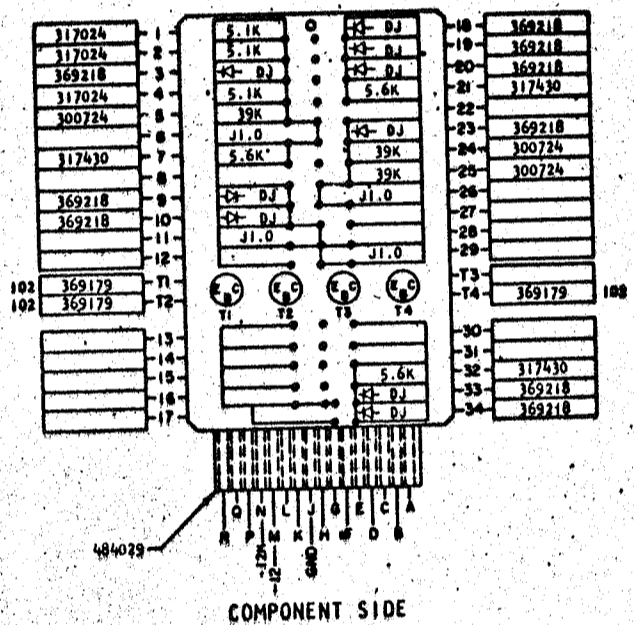
DELAY: SOTDL - LOW SPEED

LOGIC BLOCK WITH 560 OHM COLLECTOR RESISTOR

	MIN	MAX
TURN ON (NSEC)	75	100*
TURN OFF (NSEC)	40	200**

\*THIS DELAY CAN INCREASE TO 200 NSEC WHEN THE DRIVING BLOCK HAS 6.2K COLLECTOR RESISTOR RETURNED TO -12V.

\*\*THIS DELAY CAN INCREASE TO 350 NSEC WHEN THE DRIVING BLOCK OR THE BLOCK THAT DRIVES THE DRIVING BLOCK HAS 6.2K COLLECTOR RESISTOR RETURNED TO -12V.



COMPONENT SIDE

CIRCUIT AND PACKAGING STANDARD	
APPROVAL	DATE
ABC	4-2-62

INTERNATIONAL BUSINESS MACHINES CORP.	DATE	CHANGE NO.	APPROVAL	DATE	CHANGE NO.	APPROVAL	DEVELOPMENT NO.
NAME CARD ASM TSTR-SOTDL 3-WAY	6-27-62	115599					729916
LOGIC BCK LOW SPEED WITHOUT LOADS	7-3-63	EC 116034					
DESIGN							
DETAIL	RQ 3-1-62	SCALE - NONE					
CHECK	WH 3-1-63	DRAW L10 3-12-62					
APPRO		CHECK					

729916