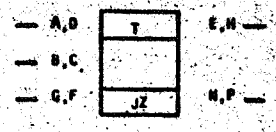


729882

STANDARD CODE

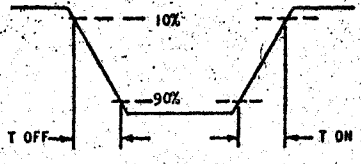
CARD CODE 729882
JZ --

REFERENCE DRAWING
SEE PRODUCTION DRAWING 371082



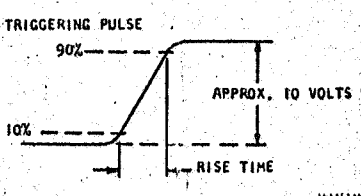
CTDL TRIGGER NO 2

DELAY - USEC
TYPICAL INVERTER AND EF OUTPUT WAVEFORM

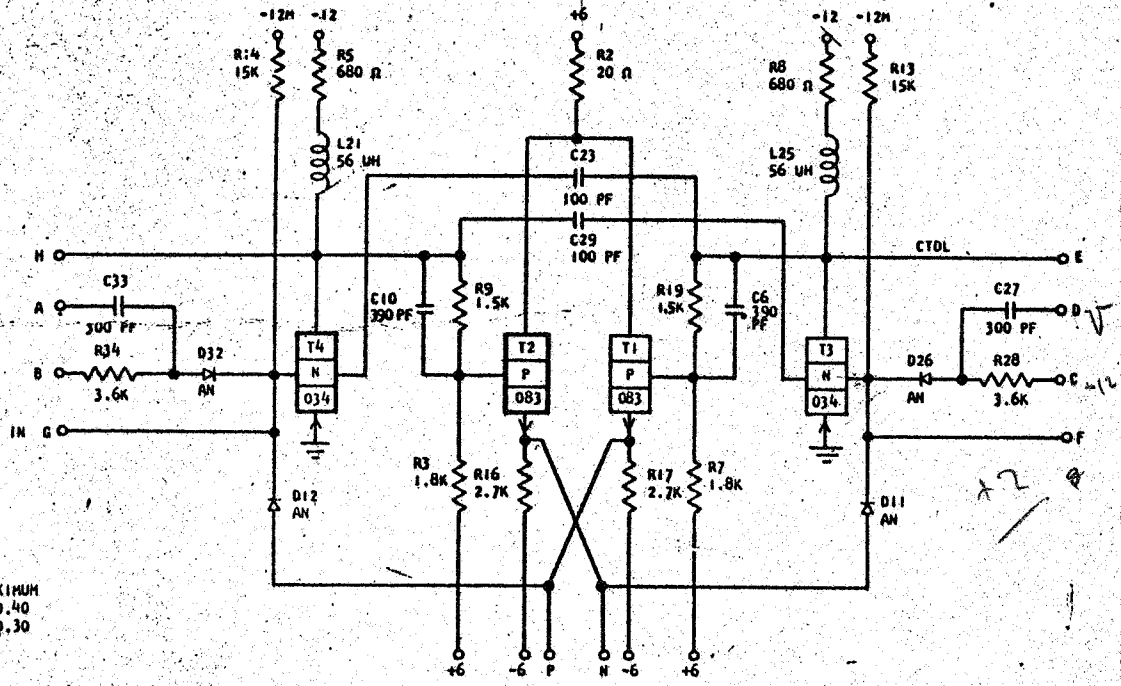


INVERTER DELAY	MINIMUM	MAXIMUM
T OFF	0.15	0.8
T ON	0.10	0.3
EF DELAY	MINIMUM	MAXIMUM
T OFF	0.05	0.1
T ON	0.10	0.4

THE FOLLOWING DELAY INFORMATION APPLIES WHEN THE AC TRIGGERING INPUT PULSE HAS A RISE TIME OF 0.45 USEC. (SEE FOLLOWING FIGURE)



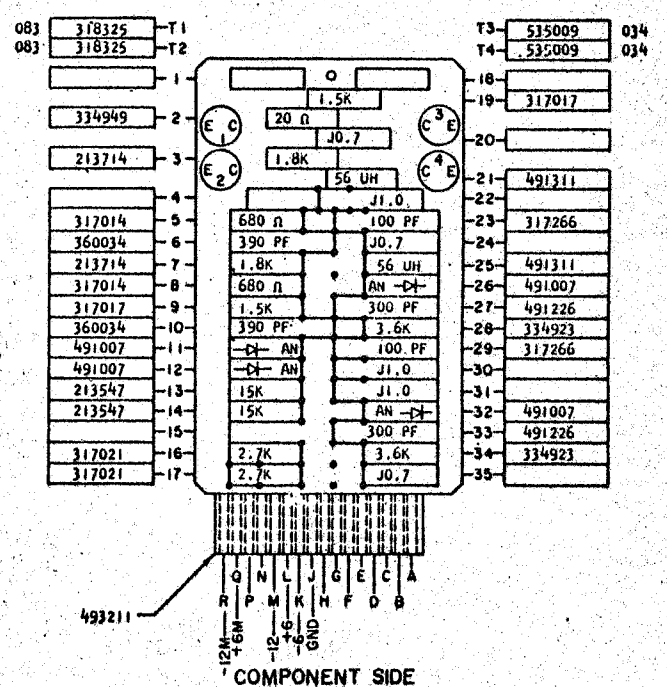
FROM AC SET TO INVERTER OUTPUTS	MINIMUM	MAXIMUM
	0.10	0.40
FROM AC SET TO EF OUTPUTS	MINIMUM	MAXIMUM
	0.10	0.30



SEQUENT OF OPERATION

1. T2 & T4 ON, T1 & T3 OFF
2. PIN B MUST BE CONDITIONED TO AN UP LEVEL 3.75 U SEC BEFORE A POSITIVE SHIFT IS APPLIED TO PIN A TO GIVE AN UP OUTPUT AT PINS E & P AND A DOWN OUTPUT AT PINS H & N. T2 & T4 ARE NOW OFF AND T1 & T3 ON.
3. TO FLIP THE TRIGGER TO ORIGINAL STATE PIN C & D MUST BE CONDITIONED AS WERE PINS A & B ABOVE.
4. COLLECTIVE PULLOVER CAN BE USED ON PINS E & H TO GIVE AN UP OUTPUT.
5. A (JN --) EXTENDER CARD PERMITS ADDITIONAL INPUTS AT PINS G & F TO CONTROL THE TRIGGER.
6. IF SET OR RESET IS ACCOMPLISHED THROUGH PINS G OR F, THE MINIMUM PULSE WIDTH IS 0.5 USEC.

PINS	SIGNAL NAME	WAVE SHAPE	LEVELS		
			MIN	MAX	
A, D	T A.C. SET		UP	-0.5	0.2
			DOWN	-7.4	-12.4
B	U GATE		UP	-0.5	0.2
			DOWN	-7.4	-12.4
C	U GATE		UP	-0.5	0.2
			DOWN	-7.4	-12.4
E	U OUTPUT		UP	-5.2	-0.8
			DOWN	-7.4	-9.2
H	U OUTPUT		UP	-5.2	-0.8
			DOWN	-7.4	-9.2
N	T OUTPUT		UP	1.4	3.1
			DOWN	0.7	-5.2
P	T OUTPUT		UP	1.4	3.1
			DOWN	0.7	-5.2



CIRCUIT AND PACKAGING STANDARD
APPROVAL DATE
ABC 4-2-62

INTERNATIONAL BUSINESS MACHINES CORP.				DATE	CHANGE NO.	APPROVAL	DATE	CHANGE NO.	APPROVAL	DEVELOPMENT NO.
NAME	CARD ASM TSK - CTDL	DATE	7-62	CHANGE NO.	115599	APPROVAL		DATE		DEVELOPMENT NO.
DESIGN	RQ	MODEL	SHS							729882
DETAIL	3-1-62	SCALE	NONE							
CHECK	3-1-62	DRAW	LIG	3-17-62						
APPRO		CHECK								

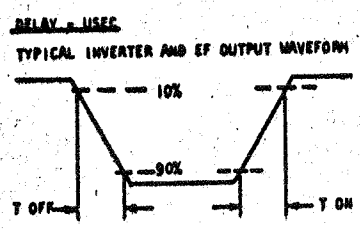
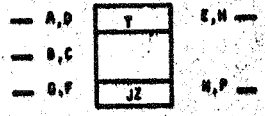
729882

CARD CODE 729882
JZ --

REFERENCE DRAWING
SEE PRODUCTION DRAWING 371082

CTDL TRIGGER, NO 2

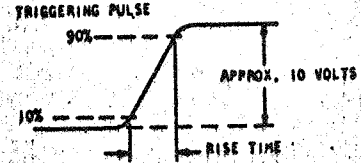
729882
STANDARD CODE



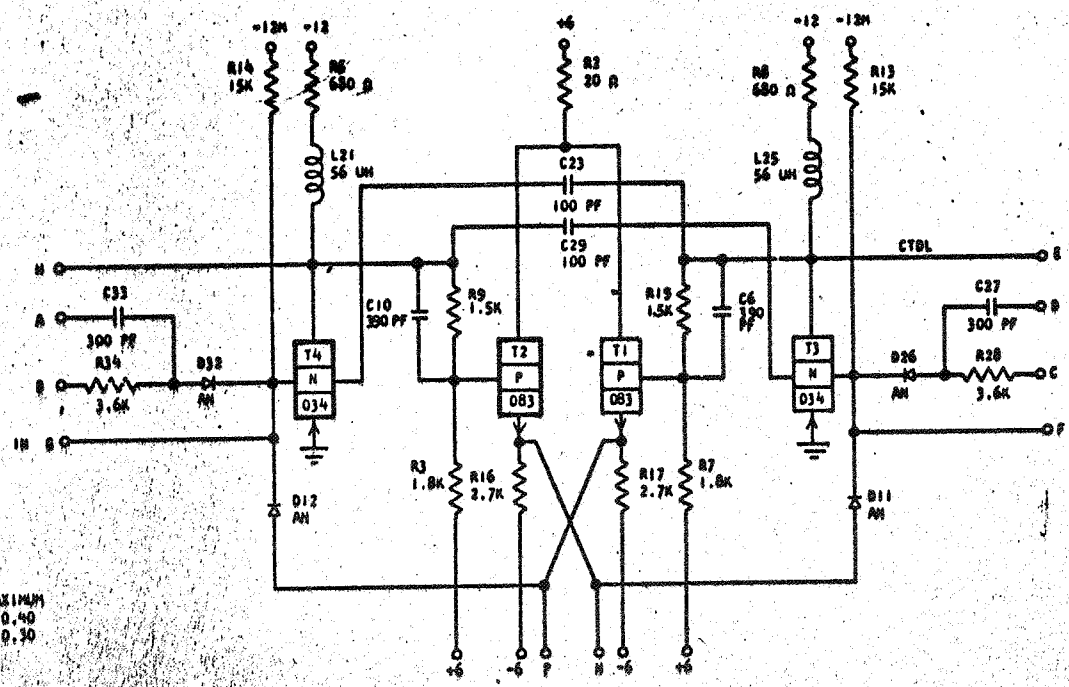
INVERTER DELAY		
	MINIMUM	MAXIMUM
T OFF	0.15	0.8
T ON	0.10	0.3

EF DELAY		
	MINIMUM	MAXIMUM
T OFF	0.05	0.1
T ON	0.10	0.4

THE FOLLOWING DELAY INFORMATION APPLIES WHEN THE AC TRIGGERING INPUT PULSE HAS A RISE TIME OF 0.45 USEC. (SEE FOLLOWING FIGURE)



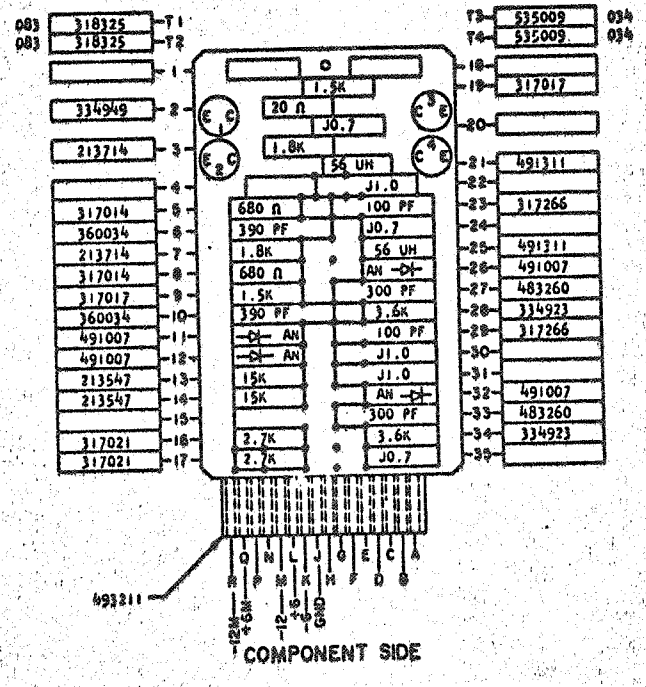
	MINIMUM	MAXIMUM
FROM AC SET TO INVERTER OUTPUTS	0.10	0.40
FROM AC SET TO EF OUTPUTS	0.10	0.30



SEQUENCE OF OPERATION

1. T2 & T4 ON, T1 & T3 OFF
2. PIN B MUST BE CONDITIONED TO AN UP LEVEL 3.75 USEC BEFORE A POSITIVE SHIFT IS APPLIED TO PIN A TO GIVE AN UP OUTPUT AT PINS E & P AND A DOWN OUTPUT AT PINS H & M. T2 & T4 ARE NOW OFF AND T1 & T3 ON.
3. TO FLIP THE TRIGGER TO ORIGINAL STATE PIN C & D MUST BE CONDITIONED AS WERE PINS A & B ABOVE.
4. COLLECTIVE PULLOVER CAN BE USED ON PINS E & H TO GIVE AN UP OUTPUT.
5. A (JH --) EXTENDER CARD PERMITS ADDITIONAL INPUTS AT PINS G & F TO CONTROL THE TRIGGER.
6. IF SET OR RESET IS ACCOMPLISHED THROUGH PINS G OR F, THE MINIMUM PULSE WIDTH IS 0.5 USEC.

PINS	SIGNAL NAME	WAVE SHAPE	LEVELS	
			MIN	MAX
A,D	T A.C. SET		UP	-0.5 0.2
			DOWN	-7.4 -12.4
B	U GATE		UP	-0.5 0.2
			DOWN	-7.4 -12.4
C	U GATE		UP	-0.5 0.2
			DOWN	-7.4 -12.4
E	U OUTPUT		UP	-5.2 -0.8
			DOWN	-7.4 -9.2
H	U OUTPUT		UP	-5.2 -0.8
			DOWN	-7.4 -9.2
M	T OUTPUT		UP	1.4 3.1
			DOWN	0.7 -5.2
P	T OUTPUT		UP	1.4 3.1
			DOWN	0.7 -5.2



CIRCUIT AND PACKAGING STANDARD

APPROVAL	DATE
ABC	4-2-62

INTERNATIONAL BUSINESS MACHINES CORP.	DATE	CHARGE NO.	APPROVAL	DATE	CHARGE NO.	APPROVAL	DEVELOPMENT NO.
NAME CARD ASM YSTR - CTDL	6-29-62	115599					729882
TRIGGER NO 2	1-4-63	EC 116066					
DESIGN							
DETAIL HQ	3-1-62	SCALE NONE					
CHECK WH	3-1-62	DRAW LIG 3-17-62					
APPROD							

729882