

729890

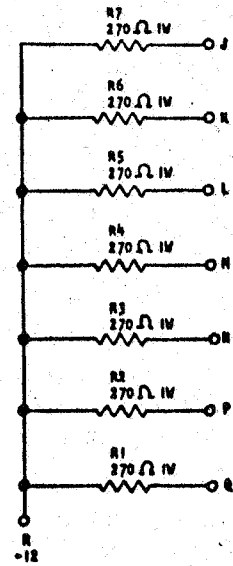
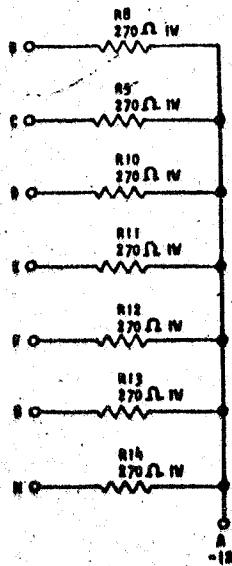
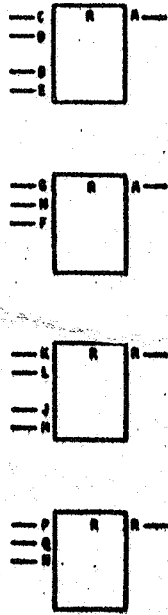
STANDARD  
CODE

CARD CODE 729890  
NW --

### REFERENCE DRAWING

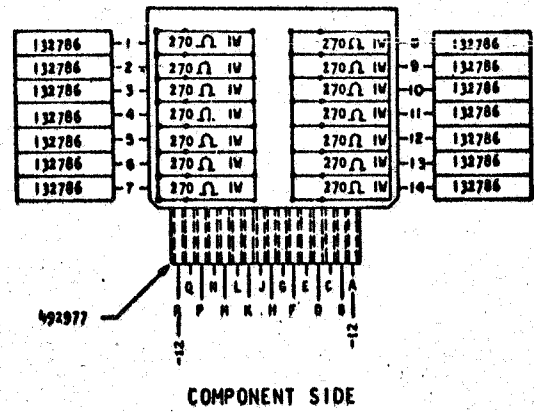
SEE PRODUCTION DRAWING 371598

### 270Ω RESISTOR CARD



#### APPLICATION

1. ALLOWS MECHANICAL SWITCH INPUT TO CYCL BLOCK
2. SWITCH OPEN OUTPUT -12V, SWITCH CLOSED OUTPUT COMMON LEVEL.
3. EACH RESISTOR IS USED INDIVIDUALLY



COMPONENT SIDE

CIRCUIT AND PACKAGING STANDARD	
APPROVAL	DATE
ABC	4-2-62

INTERNATIONAL BUSINESS MACHINES CORP.							
NAME	CARD ASM RESISTOR -270Ω	DATE	6-26-62	CHANGE NO.	EC 115599	APPROVAL	
DESIGN		MODEL	SMS				
DETAIL	AG 3-1-62	SCALE	NONE				
CHECK	WH 3-1-62	DRAW	LFB 3-17-62				
APPD		CHECK					
							729890

729890