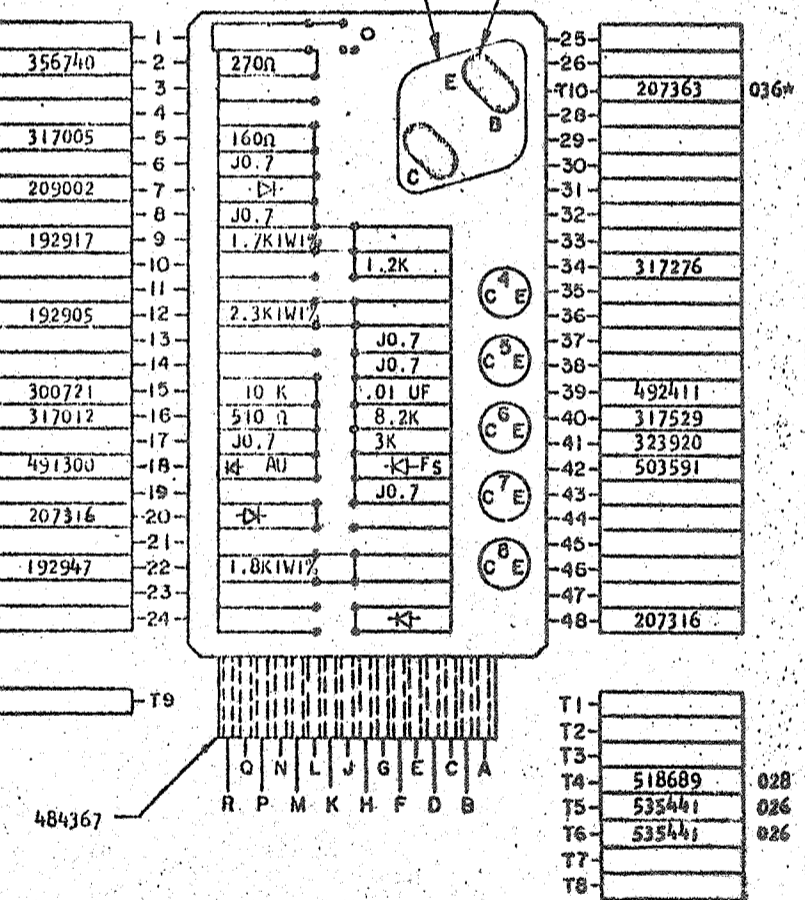


- NOTES**
- X CIRCUIT MUST CONFORM TO ENGINEERING SPECIFICATION
 - XI ASSEMBLE TO ENGINEERING SPECIFICATION 895396 AND 891999
 - XII ALL RESISTORS ARE 1/2 WATT AND ±5% UNLESS OTHERWISE NOTED.
 - XIII "JM" IN BLOCK DENOTES BARE WIRE JUMPER, 491296
 - XIV TECHNICAL LABORATORY EVALUATION INCOMPLETE. ADDITIONAL USAGE TO BE AVOIDED. THIS PART IS SUBJECT TO WITHDRAWAL
 - XV DO NOT CRIMP TRANSISTOR LEADS. HAND SOLDER TRANSISTOR TO BOARD AFTER CLEANING. MOUNT TRANSISTOR .015 MIN TO .020 MAX ABOVE SURFACE OF CARD. USE SPACER 483044(3) ON TRANSISTOR 207363. PUT TWO BEADS OF 100301 EPOXY ACROSS THE BOTTOM OF 036 TRANSISTOR 207363 AND BAKE AT 125°±5°F FOR 20 MINUTES MIN
 - XVI CUT INSULATING TAPE PART NUMBER 483029 TO A DIA OF .750±.010 AND APPLY TO TOP OF TRANSISTOR 207363
 - XVII EPOXY AREAS TO BE 3/16 TO 1/4 INCH WIDE BY APPROXIMATELY .030 HEIGHT BEFORE MOUNTING
 - XVIII MAXIMUM HEIGHT THAT COMPONENTS MAY PROJECT ABOVE SURFACE OF THE CARD WILL BE .405



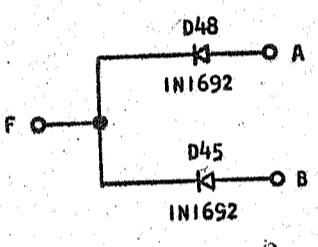
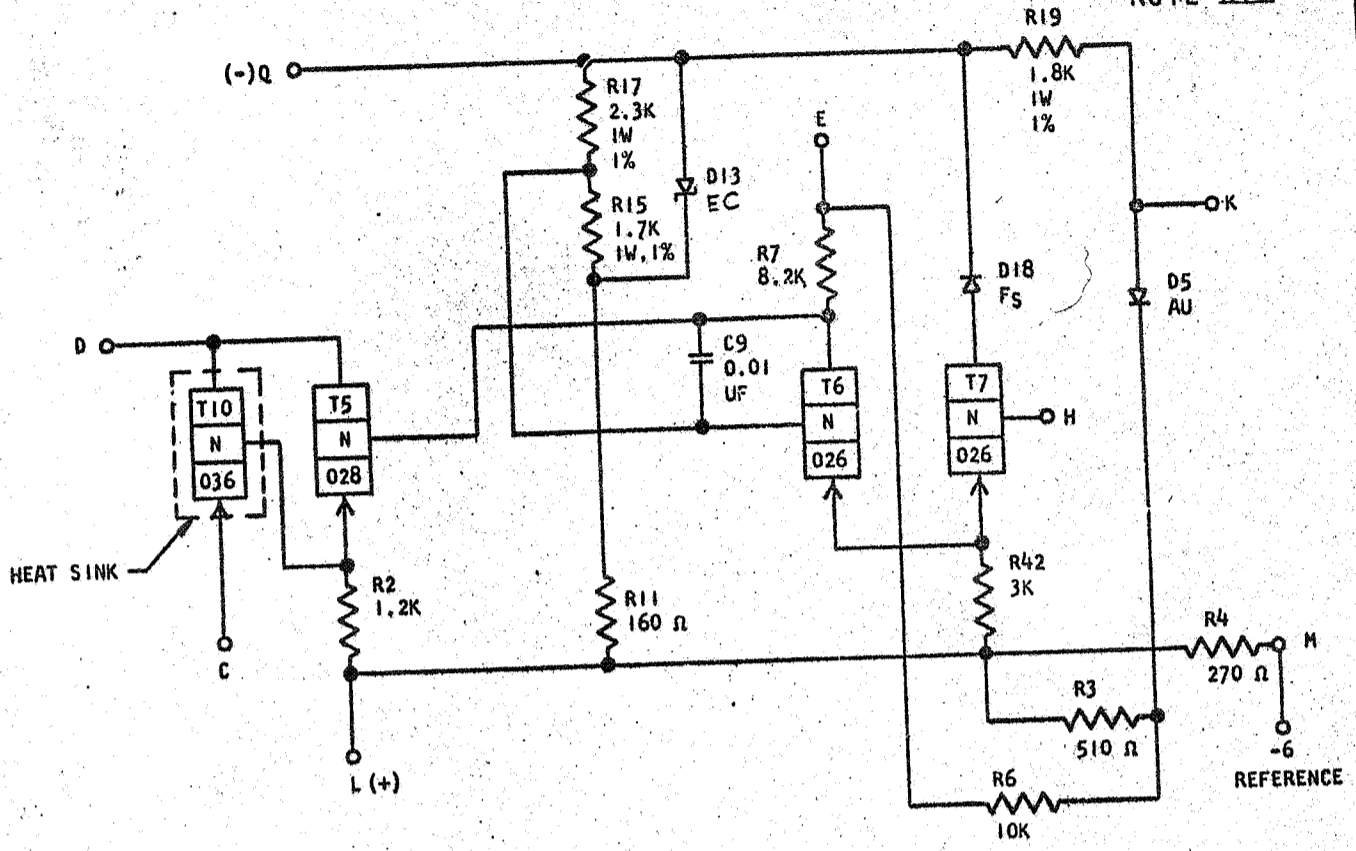
CIRCUIT AND PACKAGING STANDARDS	
APPROVAL	DATE

INTERNATIONAL BUSINESS MACHINES CORP.	DATE	CHANGE NO.	APPROVAL	DATE	CHANGE NO.	APPROVAL	DEVELOPMENT NO.
NAME CARD ASM TSTR -	6-8-61	111822	NOTE XIV				88-2159
REFERENCE TO -6 VOLTS							370613
DIAGN JPM 4-21-61 SCALE NONE							
CHICA CWS 4-25-61 DRAW VE 5-15-61							
APPROV CHC 6-2-61 CHECK JMS 6-18-61							

370613
STANDARDS CODE
2-7045
YGM -

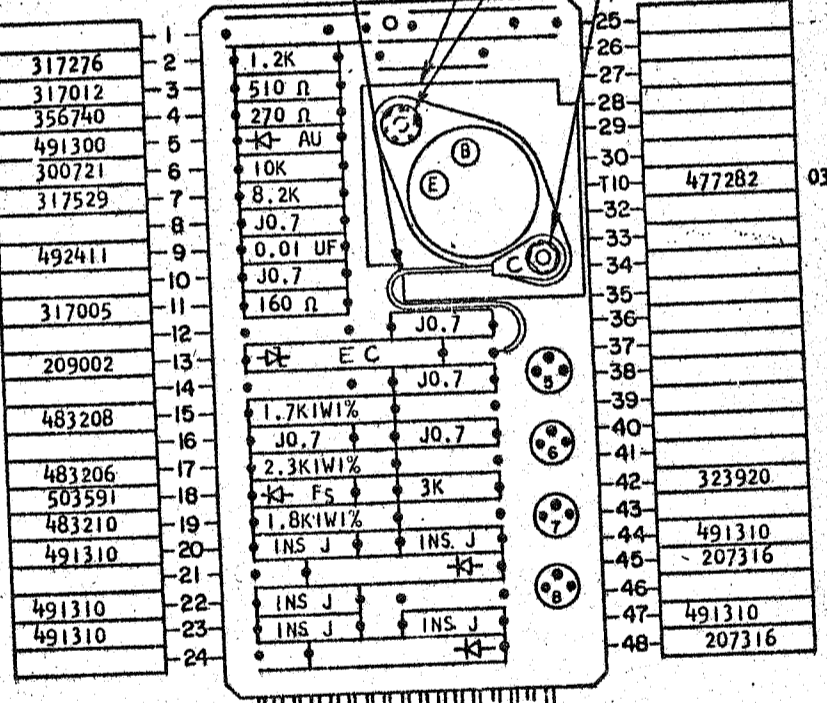
REFERENCE TO -6 VOLTS
MOUNT CARD ON ONE INCH CENTERS - NOTE XVI

370613
RESTRICTED
NOTE XIV



- 483129 SPACER
- 483138 SCREW
- 62031(2) LOCKWASHER
- NOTE XIX
- 8446(2) WASHER
- 483128 SCREW
- 38051(2) NUT
- 62031 LOCKWASHER
- NOTES XVII, XVIII

- NOTES
- X CIRCUIT MUST CONFORM TO ENGINEERING SPECIFICATION 892613
 - XI ASSEMBLE TO ENGINEERING SPECIFICATION 895396 AND 891999
 - XII ALL RESISTORS ARE 1/2 WATT AND $\pm 5\%$ UNLESS OTHERWISE NOTED
 - XIII "J" IN BLOCK DENOTES BARE WIRE JUMPER 491296 UNLESS OTHERWISE NOTED
 - * XIV TECHNICAL LABORATORY EVALUATION INCOMPLETE. ADDITIONAL USAGE TO BE AVOIDED. THIS PART IS SUBJECT TO WITHDRAWAL.
 - XV DO NOT CRIMP TRANSISTOR LEADS. MAXIMUM HEIGHT THAT COMPONENTS MAY PROJECT ABOVE SURFACE OF THE CARD WILL BE .610
 - XVII CASE IS ELECTRICALLY CONNECTED TO COLLECTOR. CONNECTION COMPLETED THROUGH JUMPER
 - XVIII WASHER 8446 TO BE PLACED BETWEEN HEAT SINK AND CARD SURFACE.
 - XIX PLACE ONE LOCKWASHER 62031 ON EACH SIDE OF NUT



B

CIRCUIT AND PACKAGING STANDARD		HOLE PATTERN		COMONENT SIDE			
APPROVAL	DATE	493457		T1	T2	T3	T4
JH Tokas	1/24/62			T5	518689	028	
INTERNATIONAL BUSINESS MACHINES CORP.				T6	535441	026	
NAME	DATE	CHANGE NO.	APPROVAL	DATE	CHANGE NO.	APPROVAL	DEVELOPMENT NO.
CARD ASM TSTR -	6-8-61	111822	NOTE XIV	6-21-62	D113950	NOTE XIV	88-2159
REFERENCE TO -6 VOLTS	12-1-61	112448	NOTE XIV	8-30-62	113136	NOTE XIV	
DESIGN	12-20-61	112448A	NOTE XIV				
DETAIL	12-29-61	113685	NOTE XIV				
CHECK	1-4-62	113967	NOTE XIV				
APPRO	2-5-62						
	3-28-62						
82-3987-2 6-22-61							

370613