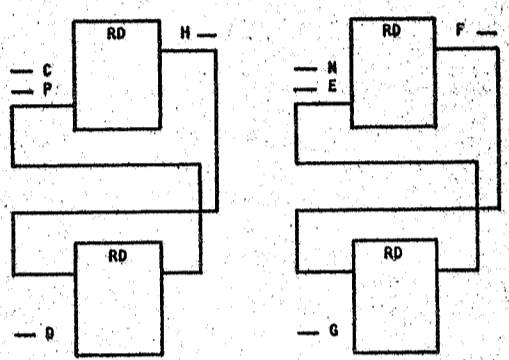
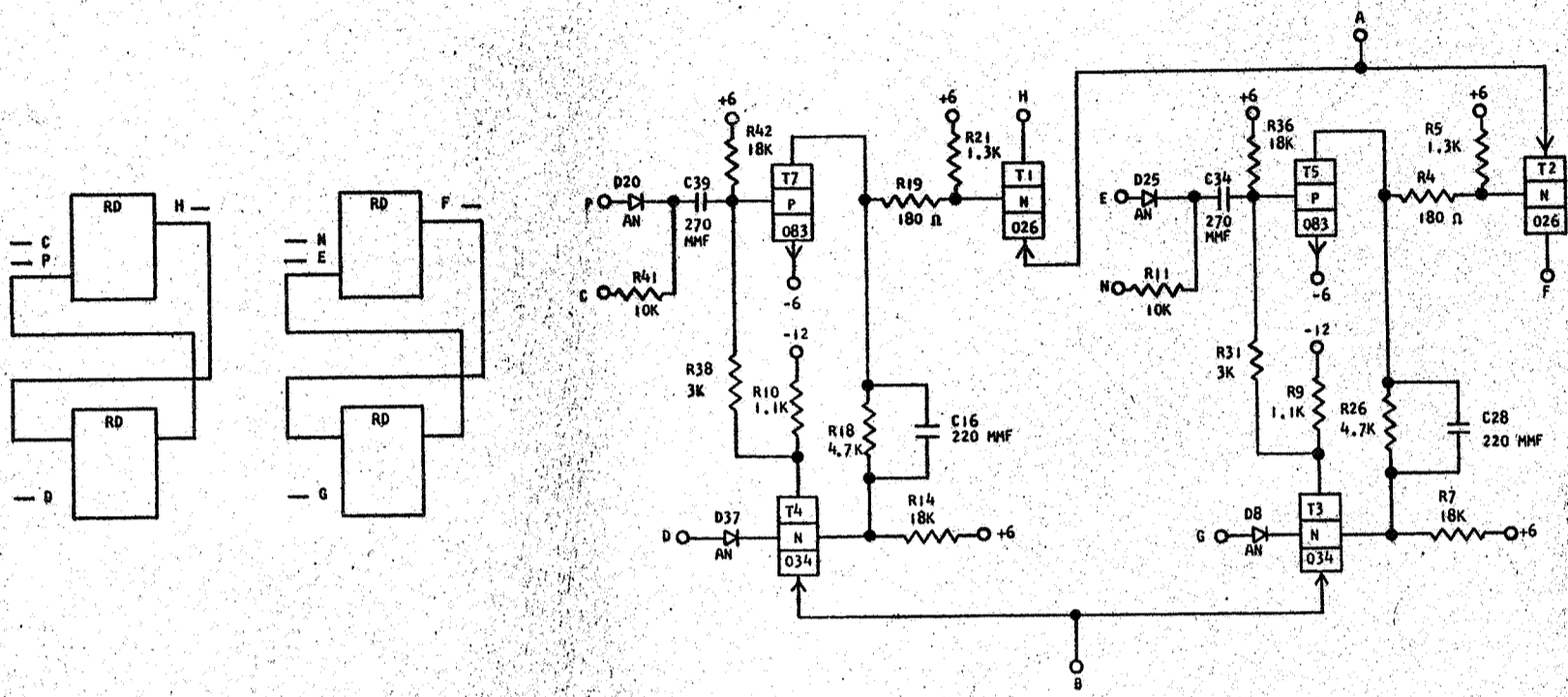


729894
STANDARDS CODE

CARD CODE 729894
QD --

REFERENCE DRAWING
SEE PRODUCTION DRAWING 371078

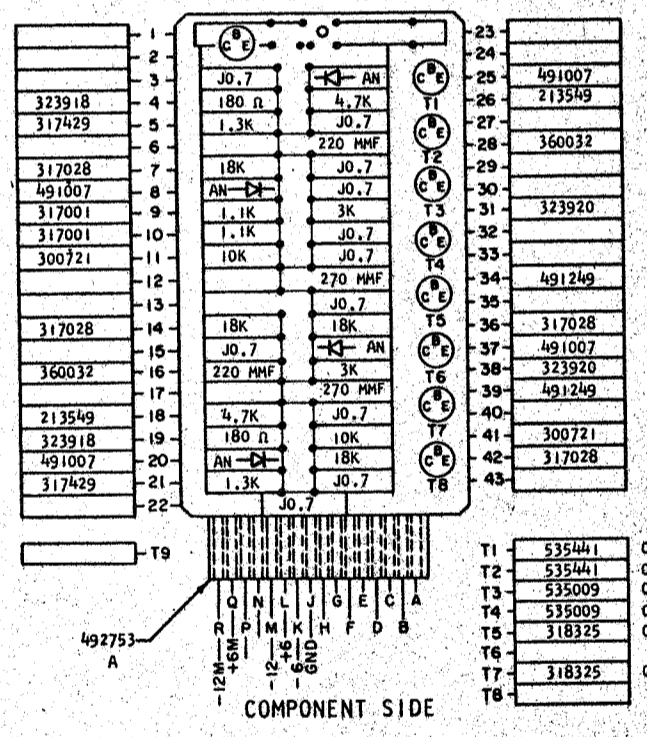
ALLOY-RELAY DRIVER



SEQUENCE OF OPERATION

- PIN C MUST BE DOWN 7.5 U SEC BEFORE P GOES TO UP LEVEL, TURNING T7 ON. T7 ON TURNS T1 & T4 ON. T4 PROVIDES LATCH BACK TO HOLD T7 ON.
- UP LEVEL AT D OR MECHANICAL RESET AT B WILL TURN T4 OFF AND OPEN LATCH BACK TO T7.

PINS	SIGNAL NAME	WAVE SHAPE	LEVELS	
			MIN	MAX
C, N U	INPUT		UP -3.0	0.2
P, E U	INPUT		UP -0.5	0.2
D, G T	RESET		UP 1.4	6.2
H, F W	OUTPUT		UP 0.2	-4.5



CIRCUIT AND PACKAGING STANDARD	
APPROVAL	DATE
ABC	4-2-62

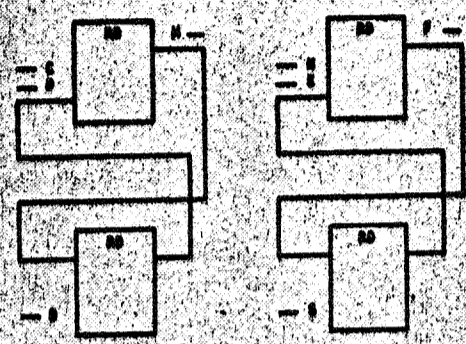
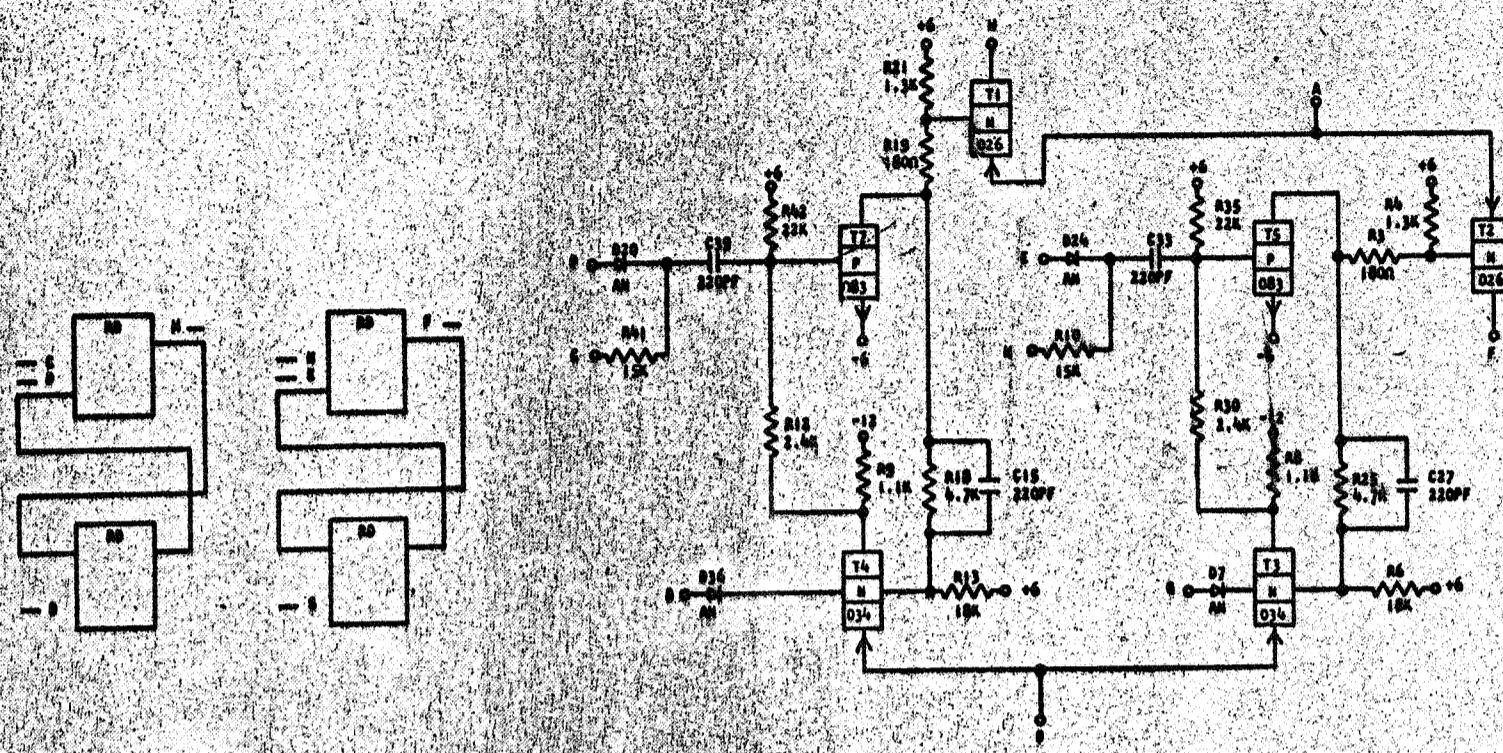
INTERNATIONAL BUSINESS MACHINES CORP.				DATE	CHANGE NO.	APPROVAL	DATE	CHANGE NO.	APPROVAL	DEVELOPMENT NO.
NAME	CARD	ASH	TSTR	2	62	115599				729894
DESIGN	RQ	3-1-62	MODEL	SMS						
DETAIL	WH	3-1-62	SCALE	NONE						
CHECK	WH	3-1-62	DRAW	LIG	3-17-62					
APPRO			CHECK							

729894
 STANDARD CASE

729894
 QD --

REFERENCE DRAWING
 SEE PRODUCTION DRAWING 371078

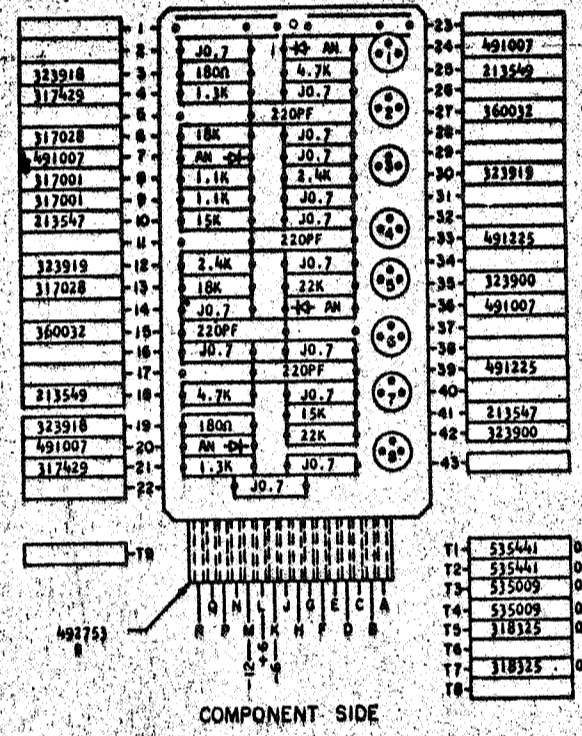
ALLOY-RELAY DRIVER



SEQUENCE OF OPERATION

1. PIN C MUST BE DOWN 7.5 V SEC BEFORE P GOES TO UP LEVEL, TURNING T2 ON. T2 ON TURNS T1 & T4 ON. T4 PROVIDES LATCH BACK TO HOLD T2 ON.
2. UP LEVEL AT D OR MECHANICAL RESET AT B WILL TURN T4 OFF AND OPEN LATCH BACK TO T2.

PINS	SIGNAL NAME	WAVE SHAPES	LEVELS	
			MIN	MAX
C, H, U	INPUT	[Waveform: High pulse]	UP	+3.0 0.2
			DOWN	-10.0 -12.5
P, E, M	INPUT	[Waveform: High pulse]	UP	+0.5 0.2
			DOWN	-0.5 -12.5
B, D, V	RESET	[Waveform: High pulse]	UP	1.4 6.2
			DOWN	-0.7 -6.2
H, F, W	OUTPUT	[Waveform: High pulse]	UP	0.2
			DOWN	-45



CIRCUIT AND PACKAGING STANDARD	
APPROVAL	DATE
ABC	4-2-62

INTERNATIONAL BUSINESS MACHINES COOP.	DATE	CHANGE NO.	APPROVAL	DATE	CHANGE NO.	APPROVAL	DEVELOPMENT NO.
NAME: CARD ASM YSTR	6-26-62	115599					729894
DRIVER	1-11-62	EC 116072					
DESIGN: RQ 3-1-62	SCALE: NONE	30-6-63	TT 03607				
DESIGN: RQ 3-1-62	SCALE: NONE						
CHECK: VM 3-1-62	SCALE: NONE						
APPRO: VM 3-1-62	SCALE: NONE						

729894

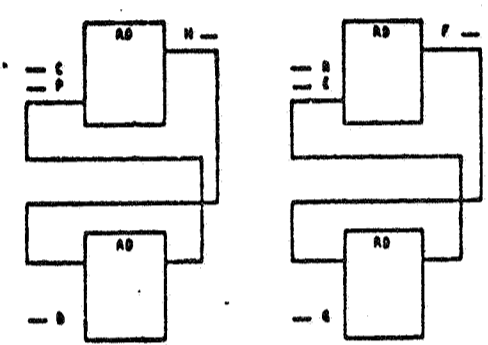
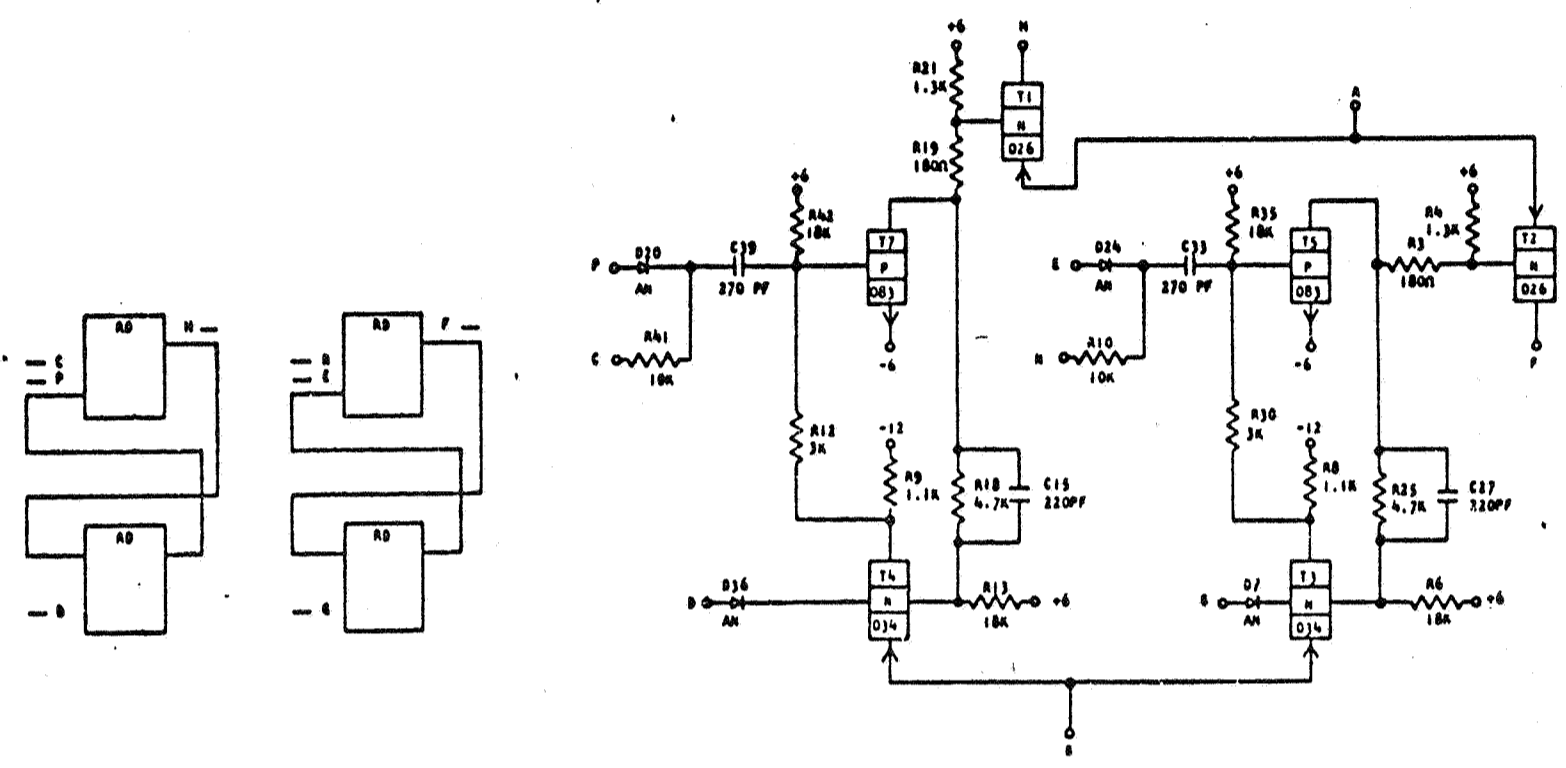
72989A

STANDARD CODE

QD -- 72989A

REFERENCE DRAWING
SEE PRODUCTION DRAWING 371078

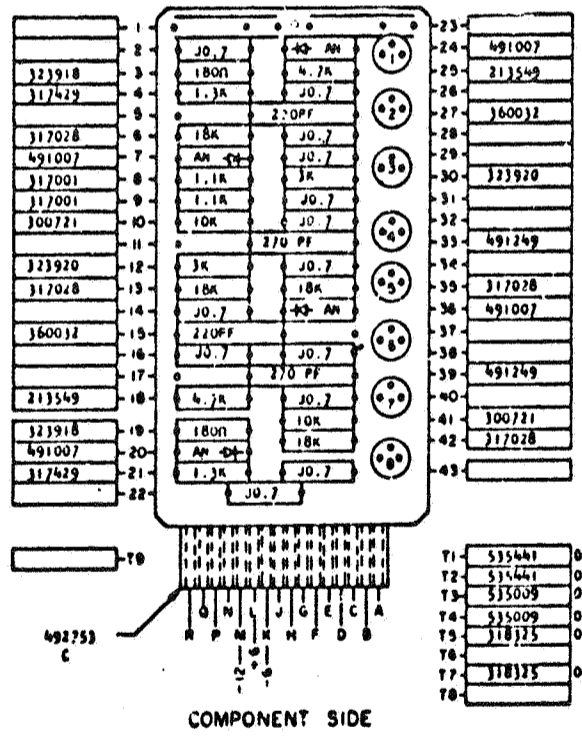
ALLOY-RELAY DRIVER



SEQUENCE OF OPERATION

1. PIN C MUST BE DOWN 7.5 μ SEC BEFORE P GOES TO UP LEVEL, TURNING T7 ON. T7 ON TURNS T1 & T4 ON. T4 PROVIDES LATCH BACK TO HOLD T7 ON.
2. UP LEVEL AT B OR MECHANICAL RESET AT B WILL TURN T4 OFF AND OPEN LATCH BACK TO T7.

PINS	SIGNAL NAME	WAVE SHAPE	LEVELS	
			MIN	MAX
C, H, U	INPUT	[Waveform]	UP -3.0	0.2
			DOWN -10.0	-12.5
P, E, U	INPUT	[Waveform]	UP -0.5	0.2
			DOWN -8.5	-12.5
B, G, T	RESET	[Waveform]	UP 1.5	0.2
			DOWN -0.7	-6.2
H, F, W	OUTPUT	[Waveform]	UP	0.2
			DOWN	-4.5



CIRCUIT AND PACKAGING STANDARD	
APPROVAL	DATE
ABC	4-2-62

APPROVAL	CHECK	MAT. LAB.	COMP. LAB.
[Signature]	[Signature]		
26.6.64			

INTERNATIONAL BUSINESS MACHINES CORP.				DATE	CHANGE NO.	APPROVAL	DATE	CHANGE NO.	APPROVAL	DEVELOPMENT NO.
NAME: CARE ASM TSTA DRIVER				6-26-62	115599					72989A
DESIGN: RQ 3-1-62				1-11-62	116072					
DETAIL: RQ 3-1-62				4-4-62	116176					
CHECK: VM 3-1-62				2-11-64	119678					
APPROV: [Signature]				26.6.64	TA 789					

72989A