

729891

STANDARD CODE

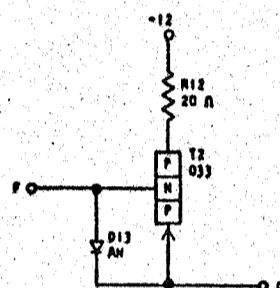
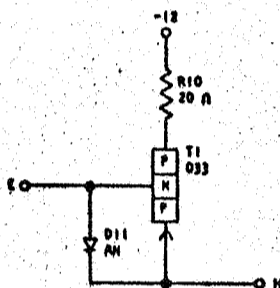
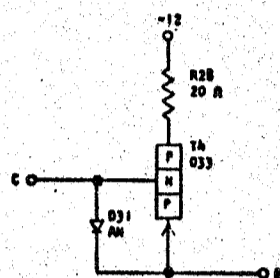
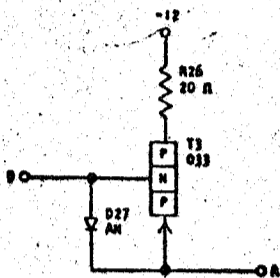
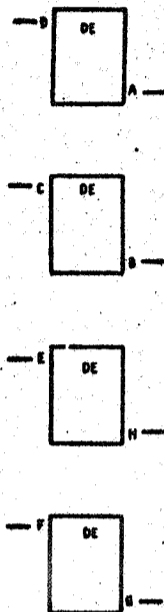
CARD CODE 729891

PP --

REFERENCE DRAWING

SEE PRODUCTION DRAWING 371365

CTDL EMITTER FOLLOWER - PNP



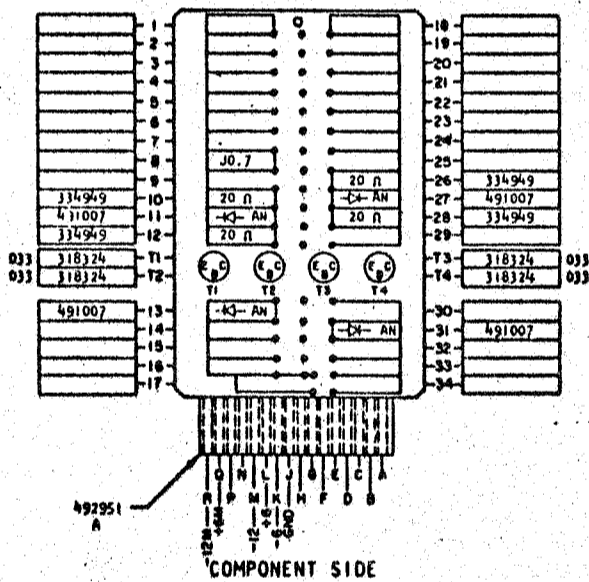
SEQUENCE OF OPERATION

1. INPUT DOWN TRANSISTOR ON OUTPUT DOWN
2. INPUT UP TRANSISTOR OFF OUTPUT UP
3. CIRCUIT MAY DRIVE UP TO 40 1-WAY LOGIC BLOCKS.

PINS	SIGNAL NAME	WAVE SHAPE	LEVELS	
			MIN	MAX
D, E, C, F	U INPUT		UP	-0.54 0.24
A, H, B, G	U OUTPUT		UP	-5.26 0.24
			DOWN	-9.66 -12.5
			DOWN	-7.44 -12.5

DELAY - USEC

NO APPRECIABLE DELAY BETWEEN THE INPUT AND OUTPUT OF THE HIGH DRIVE EF.



CIRCUIT AND PACKAGING STANDARD	
APPROVAL	DATE
ABC	4-2-62

INTERNATIONAL BUSINESS MACHINES CORP.				DATE	CHANGE NO.	APPROVAL	DATE	CHANGE NO.	APPROVAL	DEVELOPMENT NO.
NAME	CARD ASM TSTR- CTDL EMITTER FOLLOWER-PNP			1-21-62	EC115599					729891
DESIGN	RQ 3-1-62	MODEL	SMS	30-4-63	JTB3687					
DETAIL	WH 3-1-62	SCALE	NONE							
CHECK	WH 3-1-62	DRAW	LIG 3-17-62							
APPROV		CHECK								

729891