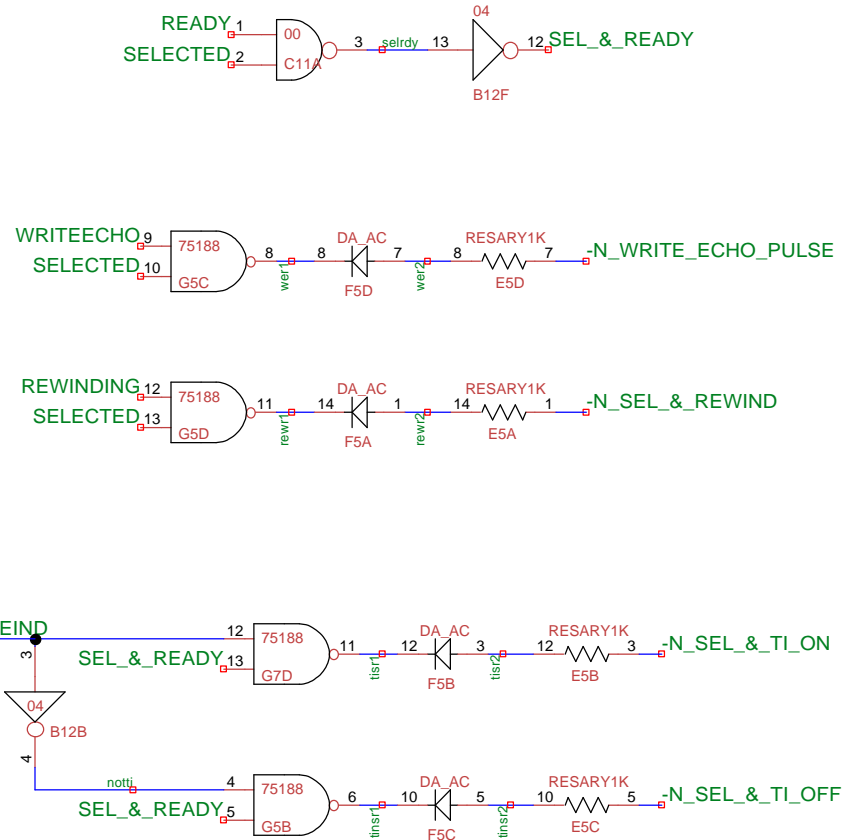
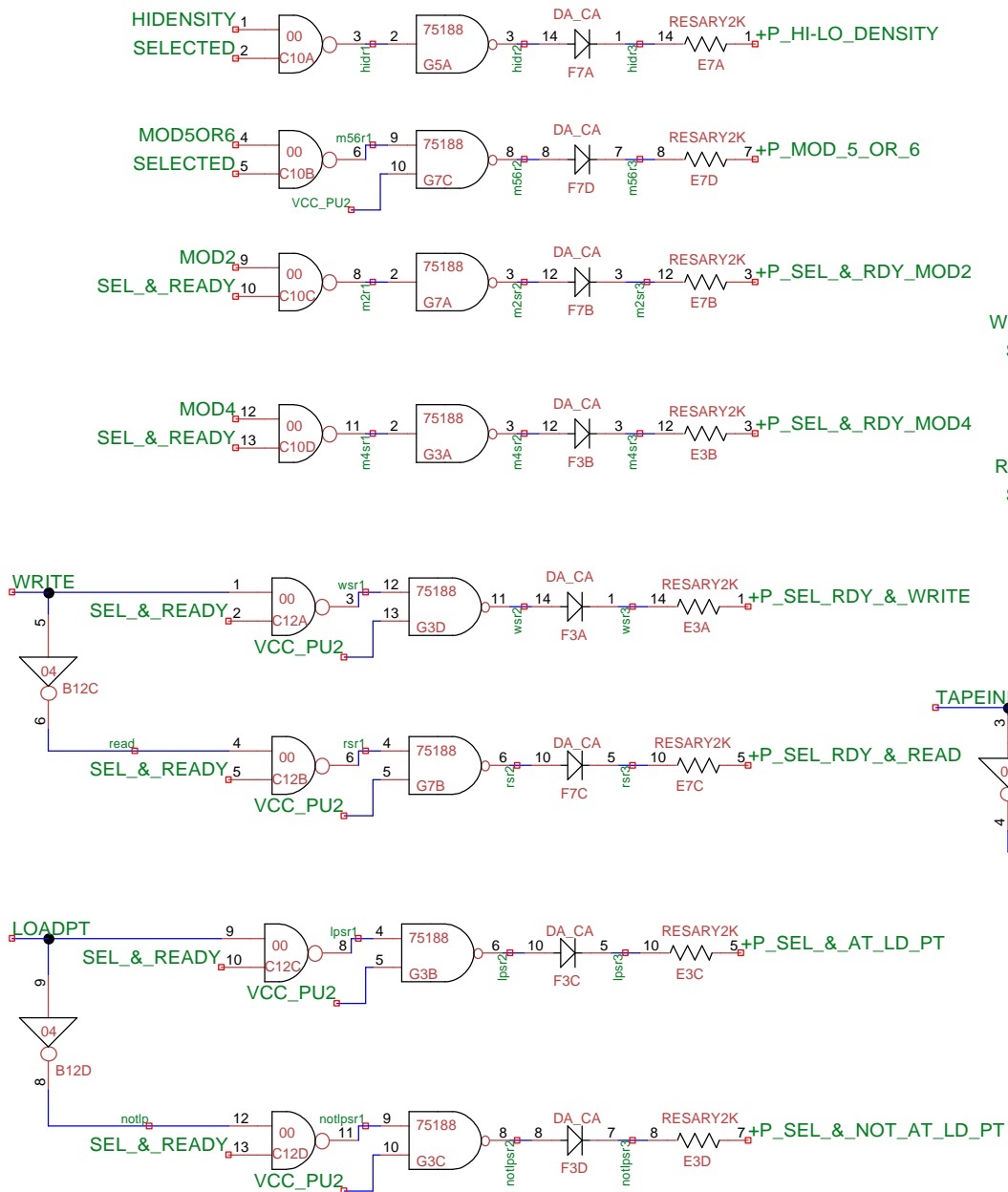


Title		
PIC and Analog Interfaces		
Author		
Bob Feretich		
1401 Team		
File		Document
C:\IBM1401\Designs\Main20.dsn		
Revision	Date	Sheets
1.1	6/16/2006	1 of 8

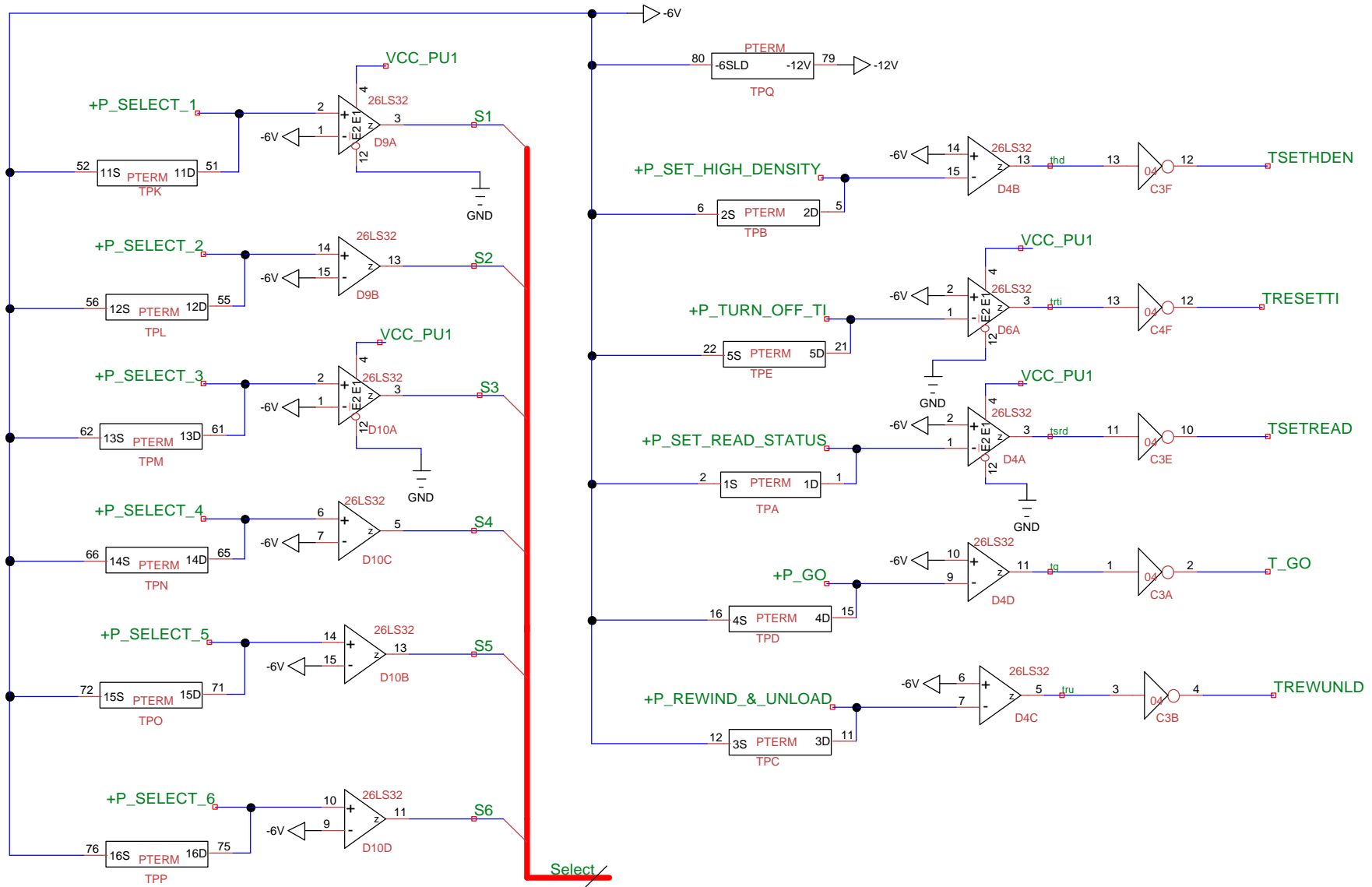
+P Drivers

All inputs are sourced from Sheet 1

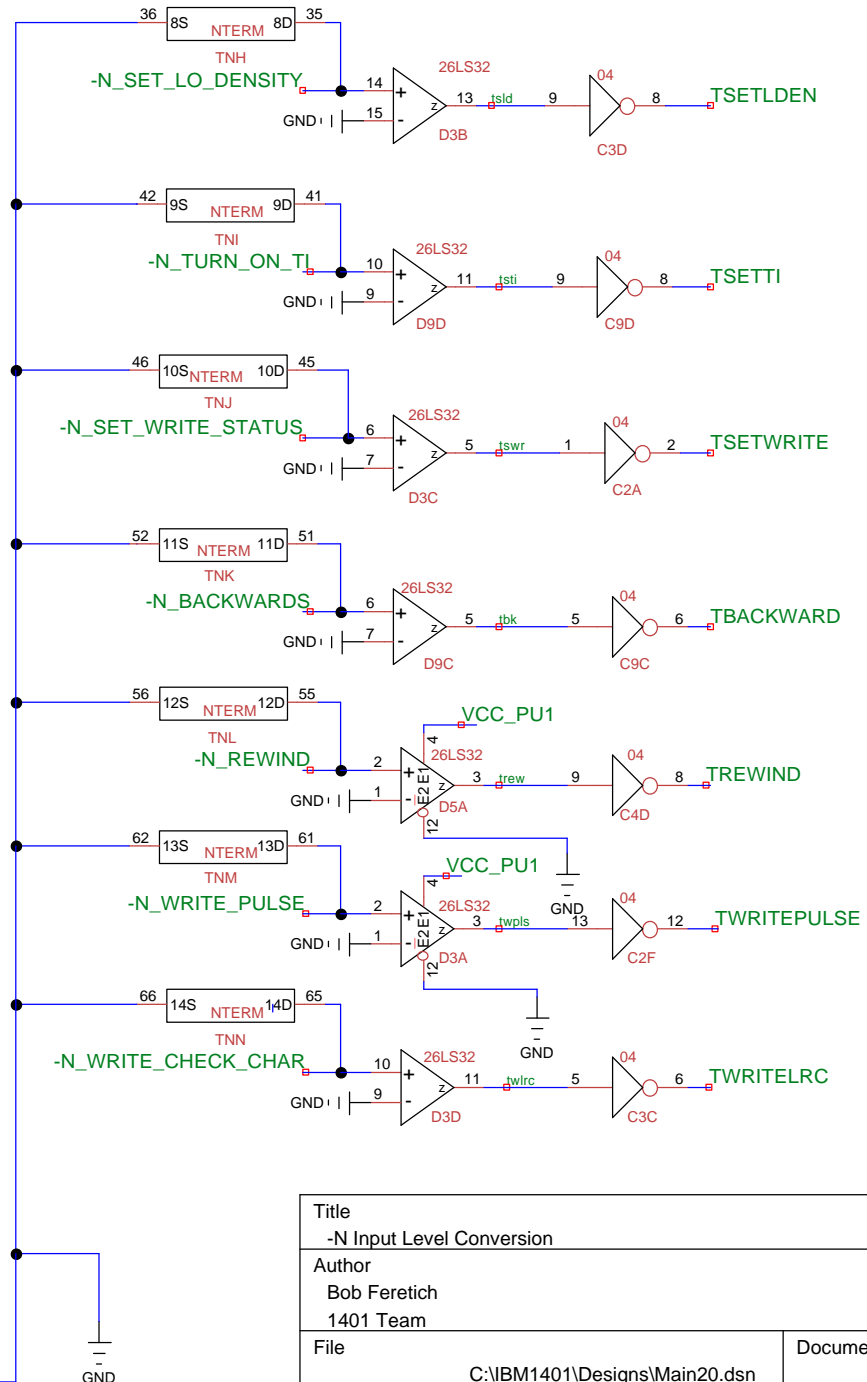
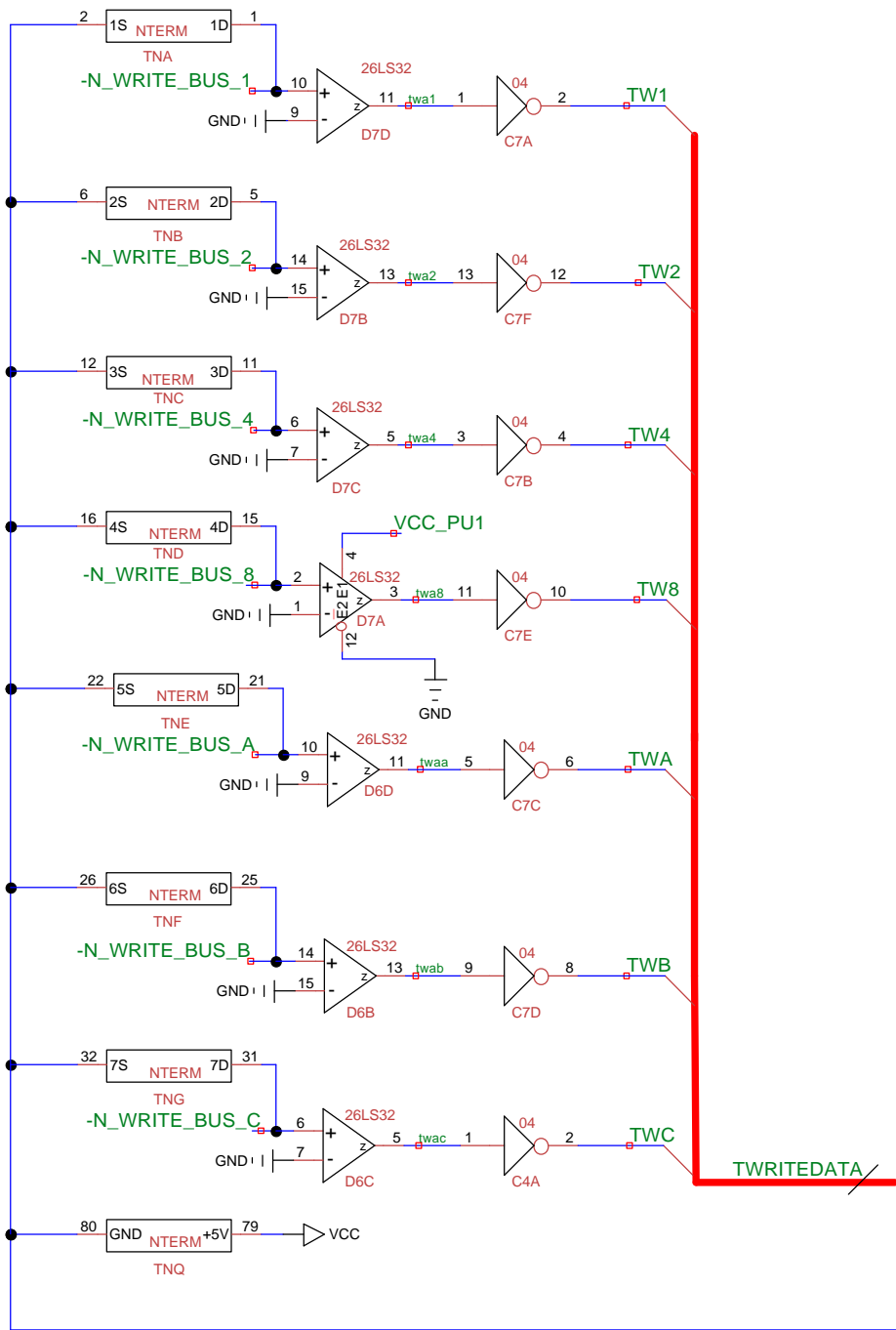
-N Drivers



Title Response signals		
Author Bob Feretch 1401 Team		
File	C:\IBM1401\Designs\Main20.dsn	
Revision	Date	Sheets
1.0	1/3/2006	2

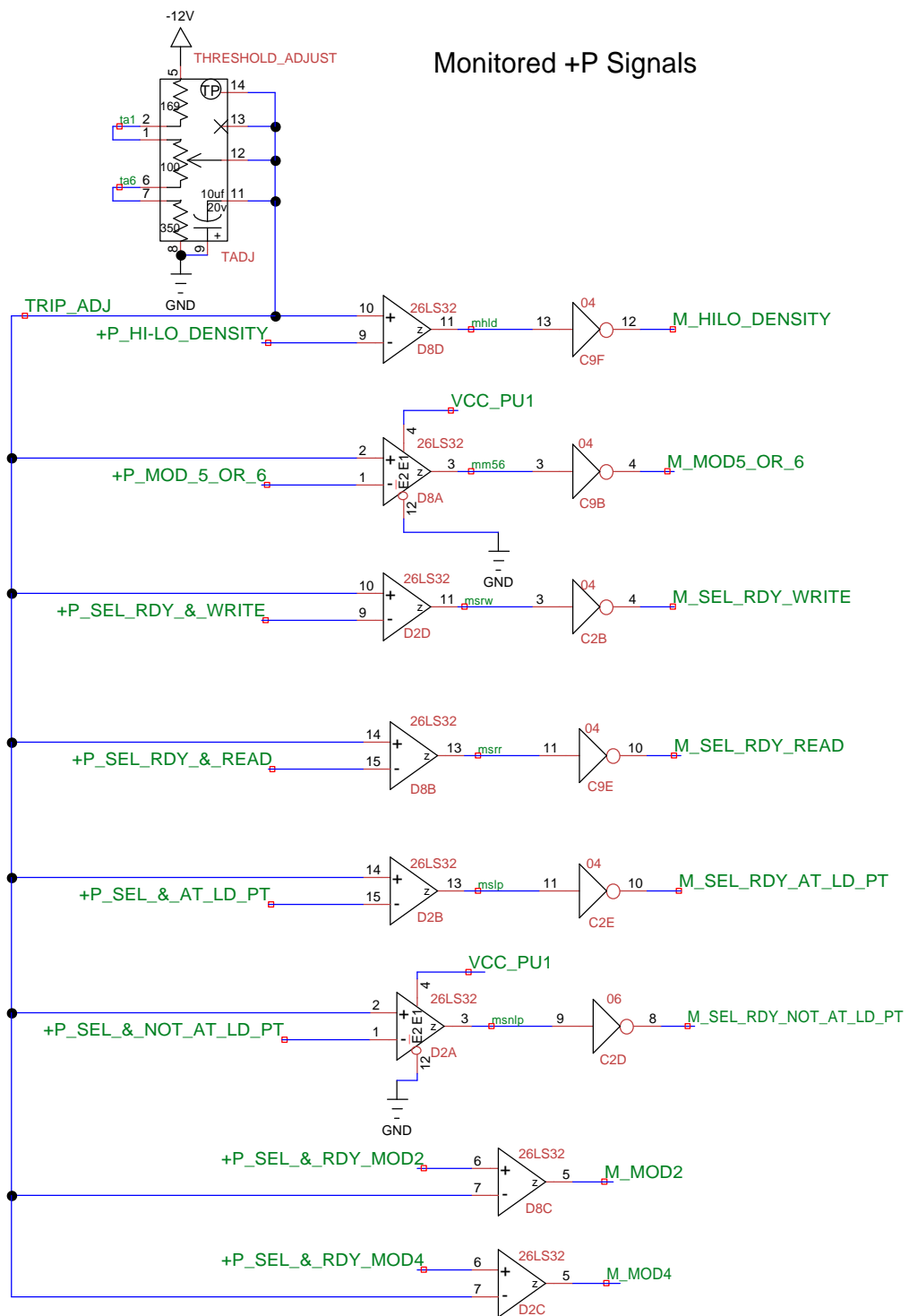


Title +P Input Level Conversion		
Author Bob Feretich 1401 Team		
File	C:\IBM1401\Designs\Main20.dsn	Document
Revision 1.0	Date 1/3/2006	Sheets 3

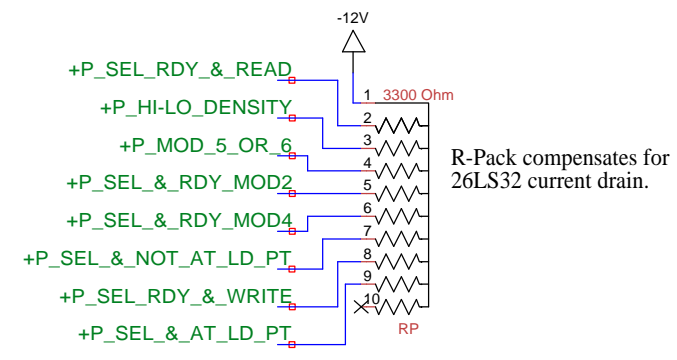
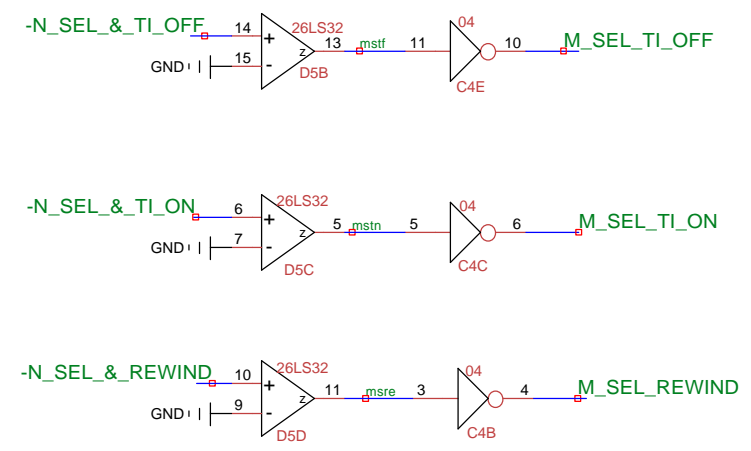


Title		
-N Input Level Conversion		
Author		
Bob Feretich		
1401 Team		
File	Document	
	C:\IBM1401\Designs\Main20.dsn	
Revision	Date	Sheets
1.0	1/3/2006	4

Monitored +P Signals

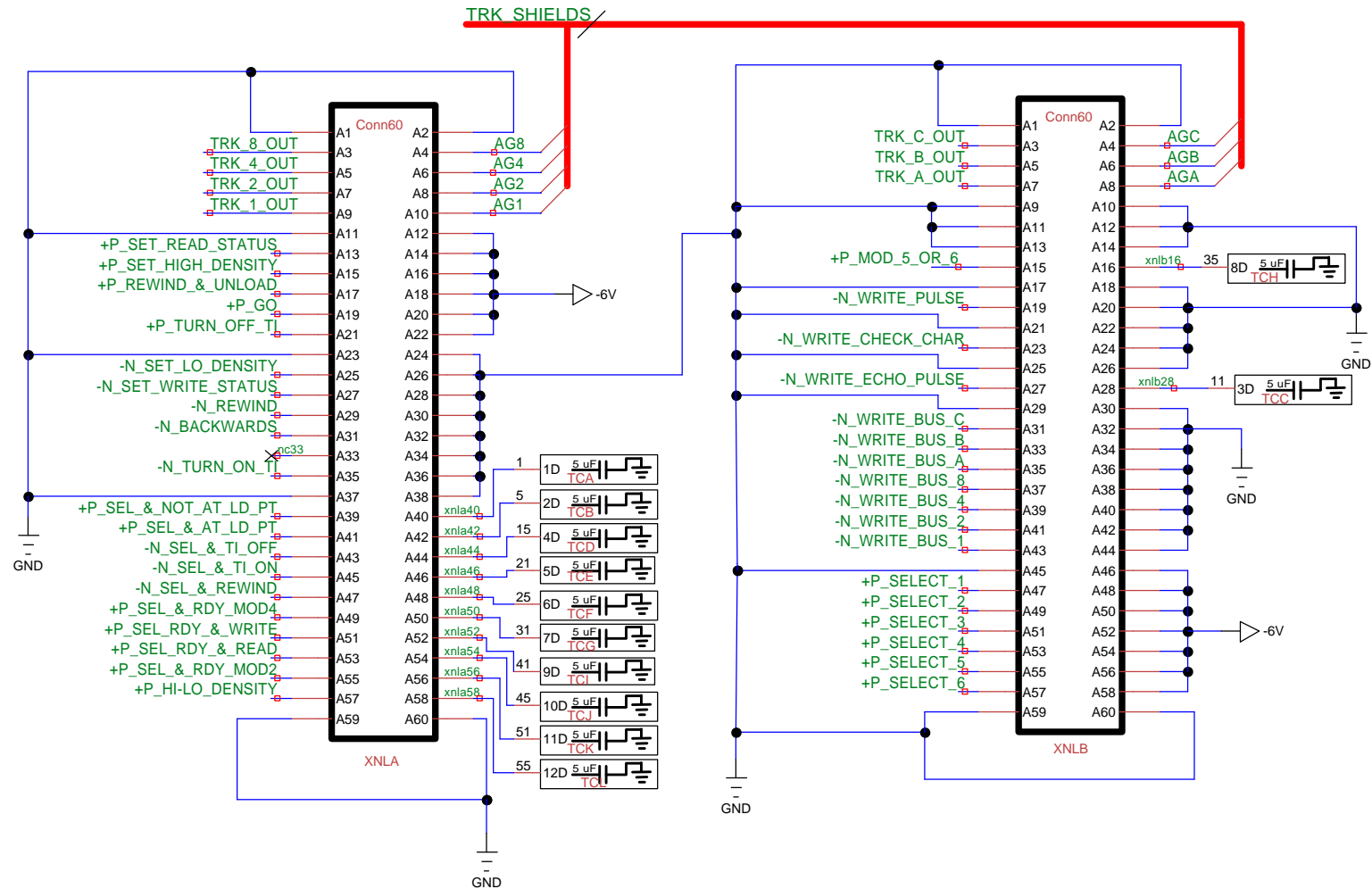


Monitored -N Signals



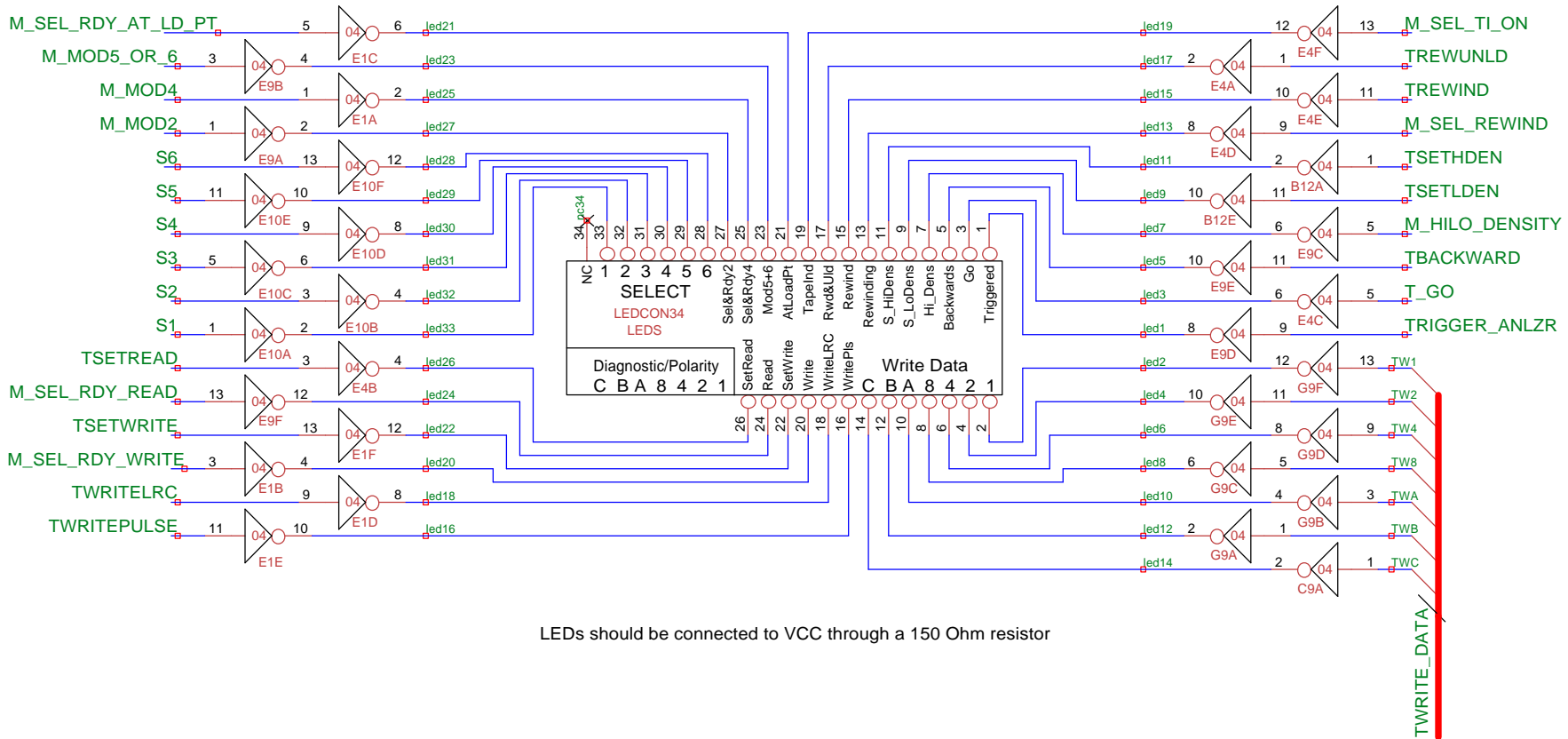
R-Pack compensates for 26LS32 current drain.

Title Monitored Signal Level Conversion		
Author Bob Feretich 1401 Team		
File	C:\IBM1401\Designs\Main20.dsn	Document
Revision 1.0	Date 3/8/2006	Sheets 5



Title		
Tape Channel Connectors		
Author		
Bob Feretich		
1401 Team		
File	C:\IBM1401\Designs\Main20.dsn	Document
Revision	Date	Sheets
1.0	2/20/2006	6

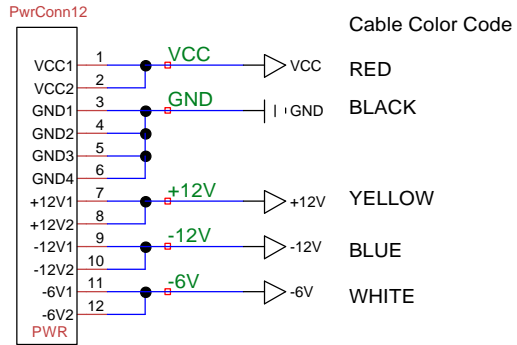
CABLE TO LED BOARD



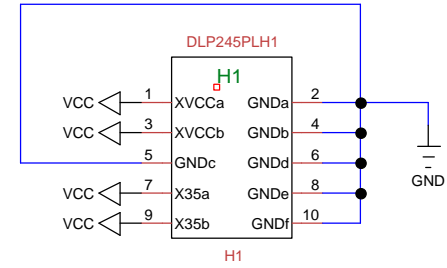
LEDs should be connected to VCC through a 150 Ohm resistor

Title LED Board Connector		
Author Bob Feretich 1401 Team		
File	C:\IBM1401\Designs>Main20.dsn	Document
Revision 1.0	Date 2/14/2006	Sheets 7

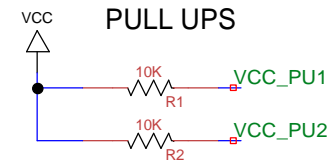
Board Power Connection



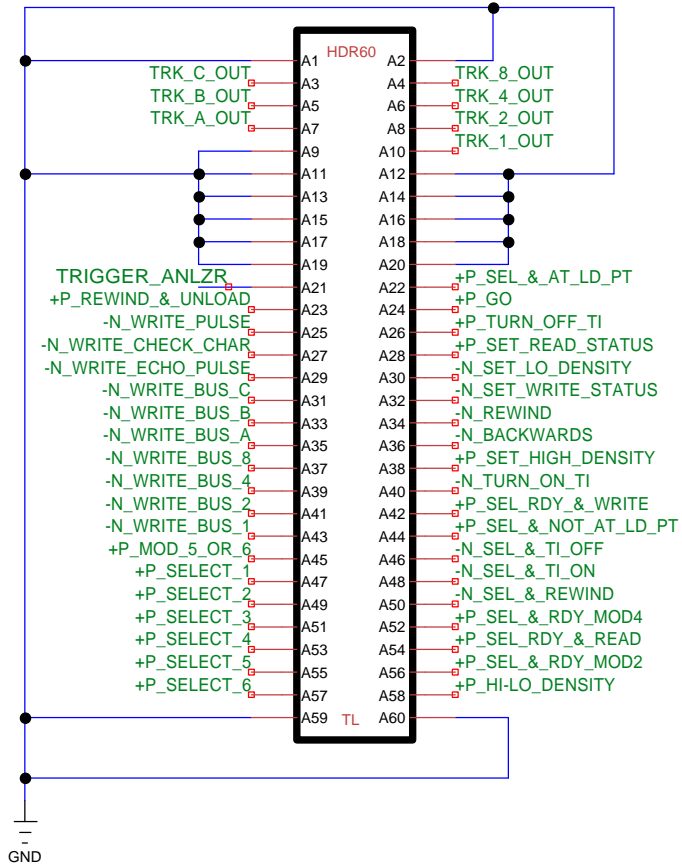
POWER TO PIC



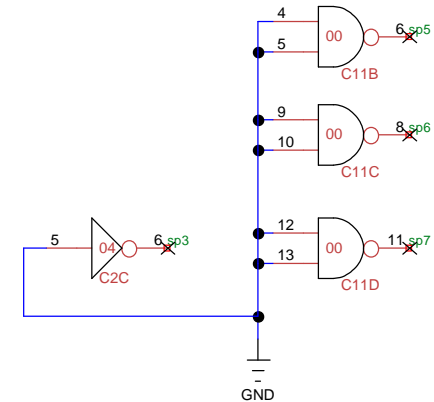
PULL UPS



TEST POINT CONNECTOR



SPARES



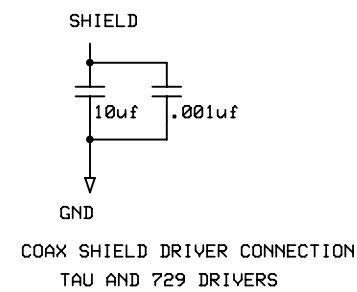
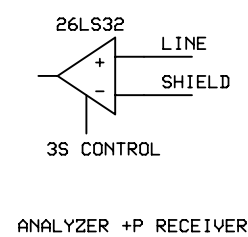
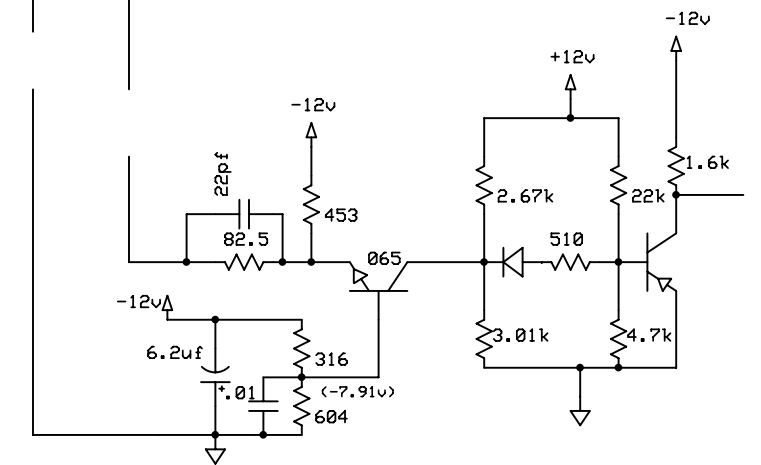
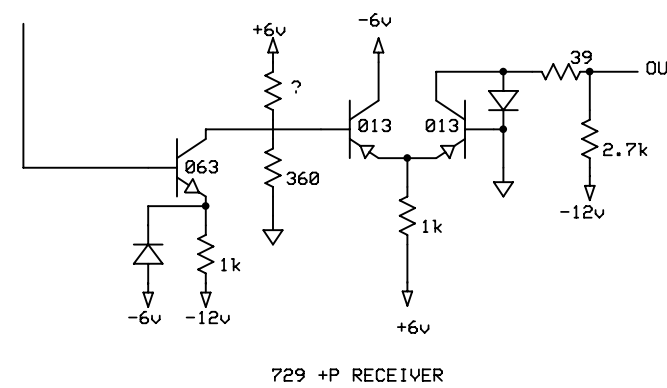
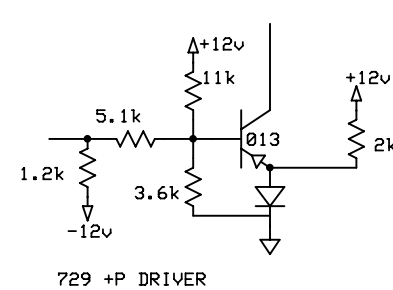
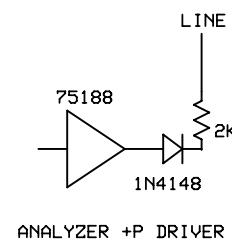
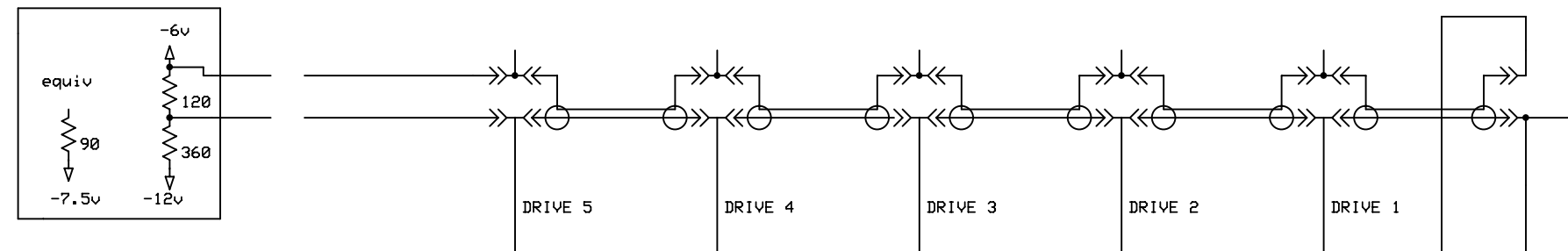
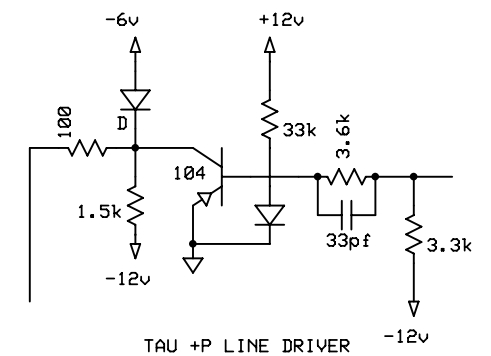
Title		
Test Connector & Power Distribution		
Author		
Bob Feretich		
1401 Team		
File	Document	
	C:\IBM1401\Designs\Main20.dsn	
Revision	Date	Sheets
1.0	2/25/2006	8

COAX SPECS Zo est 90 ohms, pf per foot is unknown, each cable is xx'

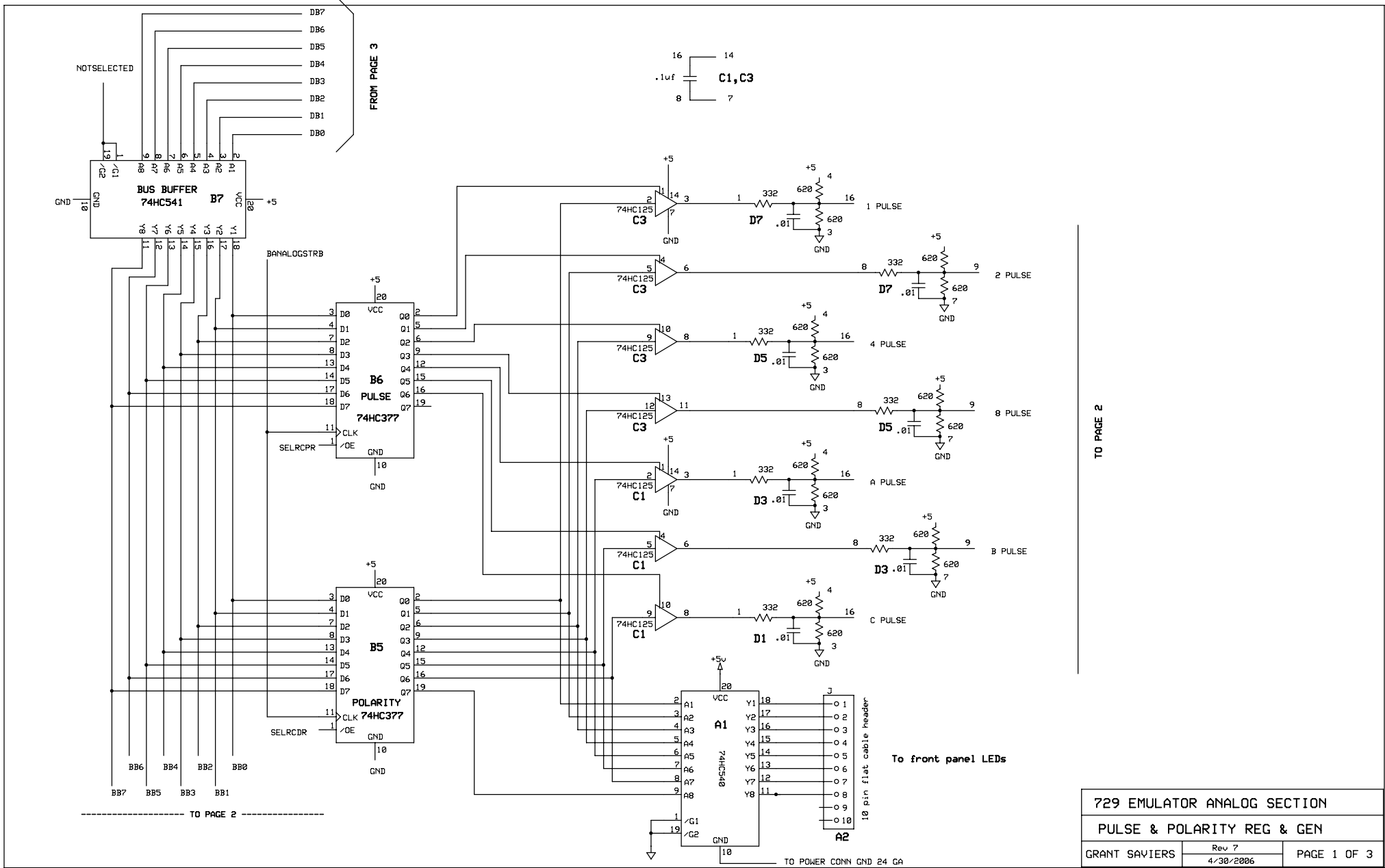
729 SOURCE +P SIGNAL LEVELS: HIGH -5.7V LOW -6.2V
 TAU SOURCE +P SIGNAL LEVELS: HIGH -4.04V LOW -6.96V

Shields are wired to -6v in each 729 for TAU sourced signals
Shields are grounded at the TAU for 729 sourced signals

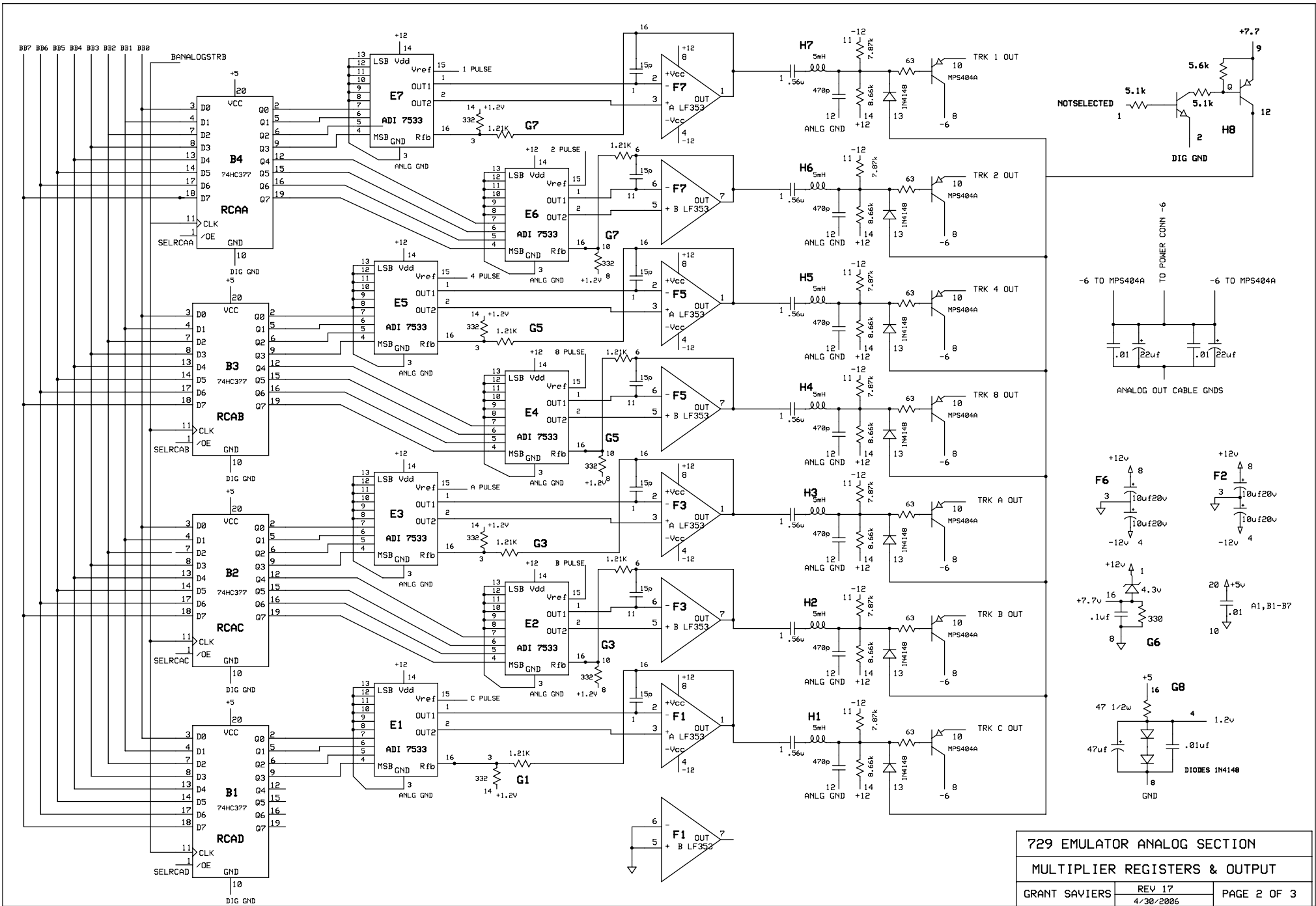
LAST DRIVE TERMINATOR, FOR TAU SOURCED SIGNALS ONLY
 NO TERMINATION FOR 729 SOURCED SIGNALS
 (PROVIDED BY 729 ANALYZER IF IT IS LAST DRIVE)



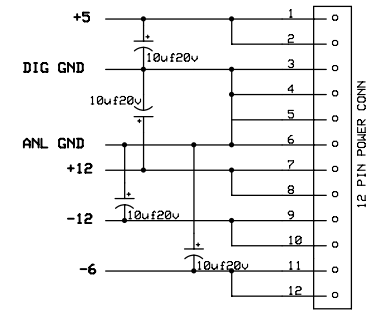
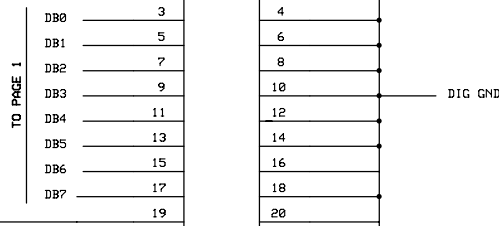
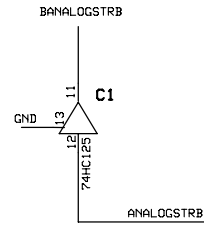
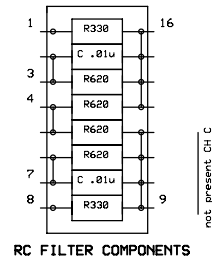
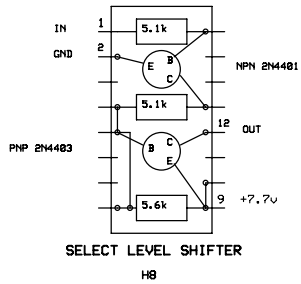
729 +P TO TAU CABLING		
GRANT SAVIERS	11/4/2005	Page 1 OF 1
	Rev 5.0	



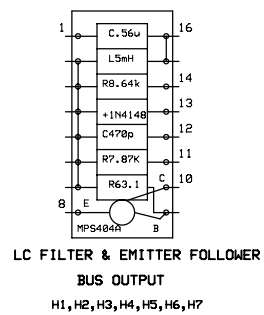
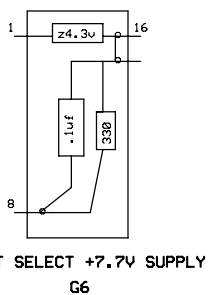
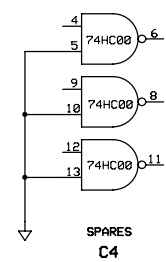
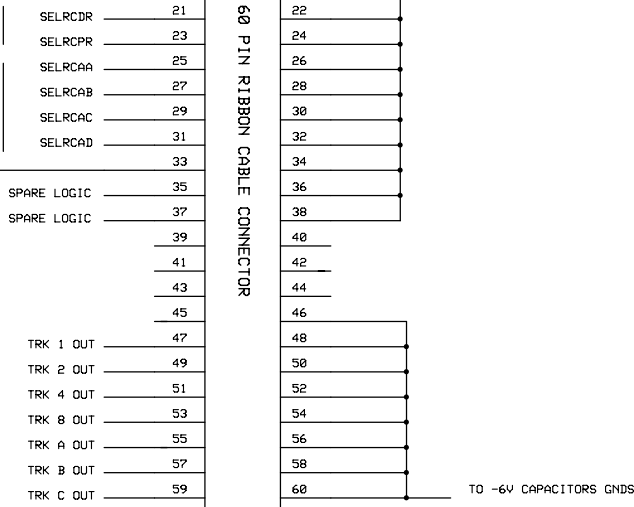
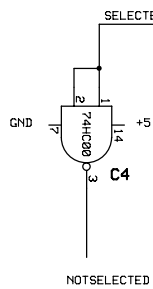
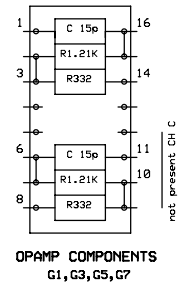
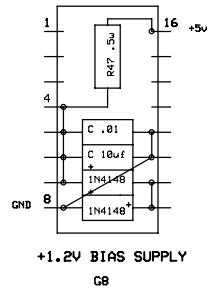
729 EMULATOR ANALOG SECTION		
PULSE & POLARITY REG & GEN		
GRANT SAVIERS	Rev 7 4/30/2006	PAGE 1 OF 3



729 EMULATOR ANALOG SECTION		
MULTIPLIER REGISTERS & OUTPUT		
GRANT SAVIERS	REV 17 4/30/2006	PAGE 2 OF 3



POWER CONNECTOR
A2



ONLY NUMBERED PINS ARE USED AS WIRE WRAP PINS
ON COMPONENT CARRIERS

729 EMULATOR ANALOG SECTION		
CONNECTORS & MISC		
GRANT SAVIERS	Rev 10.0	PAGE 3 OF 3
	4/30/2006	

ANALOG BOARD LAYOUT REV 14 1-1-06

PWR REQ: +5, +/-12, -6

